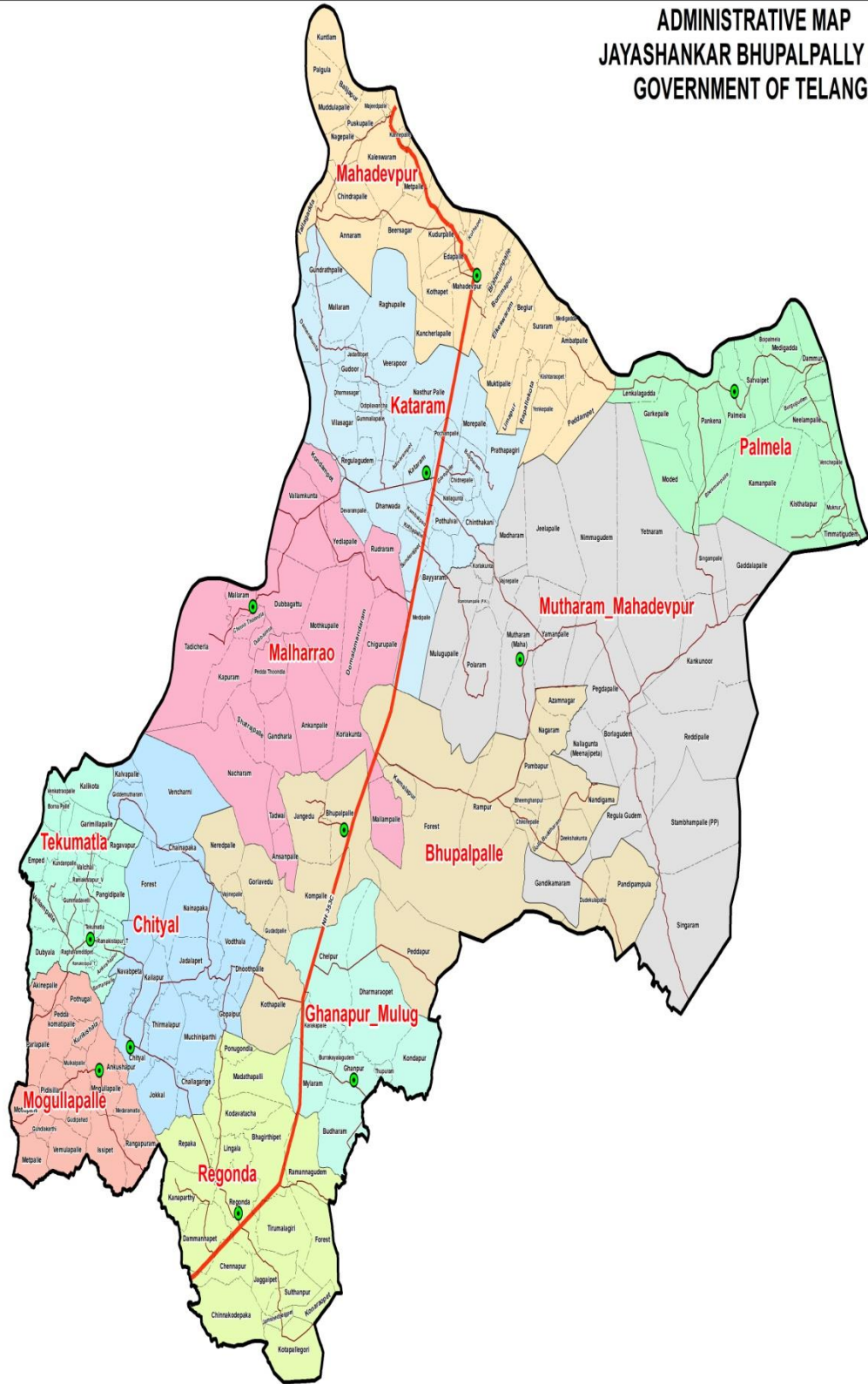


ADMINISTRATIVE MAP JAYASHANKAR BHUPALPALLY DISTRICT GOVERNMENT OF TELANGANA



Legend

- Mandal Headquarter
- National Highway
- R & B Roads
- Mandal Boundary
- Village Boundary



JAYASHANKAR BHUPAPALLY DISTRICT PROFILE

Sl.No	Parameters	Unit	Year	Bhupalpally District
1	2	3	4	5
1	Geographical Area	Sq. Kms.		2293
2	Villages / Gram Panchayats / Mandals / Mandal Praja Parishads:			
a	Revenue Villages	Nos.	2018-19	223
b	Gram Panchayats	Nos.	2018-19	241
c	Revenue Mandals	Nos.	2018-19	11
d	Mandal Praja Parishads	Nos.	2018-19	11
3	Population as per 2011 Census:			
a	Total Population (as per 2011 Census)	Nos.	2011 Census	416763
b	Male	Nos.	2011 Census	207998
c	Female	Nos.	2011 Census	208765
d	Sex Ratio (Females per 1000 Males)	Ratio	2011 Census	1004
e	Rural Population	Nos.	2011 Census	359597
f	Urban Population	Nos.	2011 Census	57166
g	% Rural to Total Population	%	2011 Census	76.26
h	% Urban to Total Population	%	2011 Census	23.74
i	Households	Nos.	2011 Census	111383
j	Household Size	Nos.	2011 Census	4
k	Density of Population	No. per sq.kms.	2011 Census	182

3a	Population as per Samagra Kutumbha Sarvey (SKS)2014			
a	House Holds	Nos.	SKS-2014	135342
a	Total Population	Nos.	SKS-2014	420075
b	SC Population	Nos.	SKS-2014	97055
c	ST Population	Nos.	SKS-2014	43257
d	BC Population	Nos.	SKS-2014	238980
e	Others	Nos.	SKS-2014	40783
4	Child Population (0 – 6 Years):			
a	Total	Nos.	2011 Census	38707
b	Male	Nos.	2011 Census	20234
c	Female	Nos.	2011 Census	18473
d	Rural	Nos.	2011 Census	35139
e	Urban	Nos.	2011 Census	3568
	Sex Ratio	Ratio	2011 Census	913
5	Literates:			
a	Total	Nos.	2011 Census	234294
b	Male	Nos.	2011 Census	135517
c	Female	Nos.	2011 Census	98777
5a	Literacy Rate:			
d	Total	%	2011 Census	62

e	Male	%	2011 Census	72
f	Female	%	2011 Census	52
6	Scheduled Castes Population:			
a	Total	Nos.	2011 Census	92017
b	Male	Nos.	2011 Census	45822
c	Female	Nos.	2011 Census	46195
	Sex Ratio	Ratio	2011 Census	1008
7	Scheduled Tribes Population:			
a	Total Population	Nos.	2011 Census	37192
b	Male	Nos.	2011 Census	18877
c	Female	Nos.	2011 Census	18315
	Sex Ratio	Ratio	2011 Census	970
8	Workers:			
a	Total Workers	Nos.	2011 Census	213651
b	Main Workers	Nos.	2011 Census	173384
c	Marginal Workers	Nos.	2011 Census	40807
9	Rainfall:			
a	Normal Rainfall	mms.	2018-19	1177
b	Actual Rainfall	mms.	2018-19	1168
10	Agriculture:			

10.a	Land Holdings:			
a	Total	Nos.	2015-16	105702
b	Marginal	Nos.	2015-16	72314
c	Small	Nos.	2015-16	22587
d	Semi medium	Nos.	2015-16	8929
e	Medium	Nos.	2015-16	1675
f	Large	Nos.	2015-16	197
10.b	Cropped Area:			
a	Gross Cropped Area	Hects.	2018-19	100881
b	Net Cropped Area	Hects.	2018-19	85176
c	Gross Irrigated Area	Hects.	2018-19	63979
d	Net Irrigated Area	Hects.	2018-19	48813
10.c	Area under:			
a	PADDY	Hects.	2018-19	24196
b	JOWAR	Hects.	2018-19	0
c	BAJRA	Hects.	2018-19	0
d	MAIZE	Hects.	2018-19	460
e	RED GRAM	Hects.	2018-19	43
f	BLACK GRAM	Hects.	2018-19	12
g	GREEN GRAM	Hects.	2018-19	61
h	GROUND NUT	Hects.	2018-19	3
i	COTTON	Hects.	2018-19	53401

j	CHILLIES	Hects.	2018-19	6241
k	TURMERIC	Hects.	2018-19	395
11	Livestock Population :			
a	Total Livestock Population (without dogs)	Nos.	2012 Census	734700
b	Cattle	Nos.	2012 Census	95792
c	Buffaloes	Nos.	2012 Census	81948
d	Sheep	Nos.	2012 Census	195865
e	Goat	Nos.	2012 Census	70900
f	Others	Nos.	2012 Census	17570
g	Poultry	Nos.	2012 Census	272625
12	Veterinary facilities :			
a	Veterinary Poly Clinics	Nos.	2016-17	0
b	Veterinary Hospitals	Nos.	2016-17	4
c	Veterinary Dispensaries	Nos.	2016-17	13
d	Rural Live Stock Units, including Mobile veterinary Clinics	Nos.	2016-17	12
13	Hospitals :			
a	i.Govt. Hospitals, Allopathic (including PHCs)	Nos.	2016-17	13
	ii. Dispensaries	Nos.	2016-17	8
b	Govt. Hospitals, Ayurvedic (including Dispensaries)	Nos.	2016-17	4
c	Govt. Hospitals, Homeopathy , (including Dispensaries)	Nos.	2016-17	3
d	Govt. Hospitals, Unani (including Dispensaries)	Nos.	2016-17	2
e	Govt. Hospitals Naturopathy (including Dispensaries)	Nos.	2016-17	0

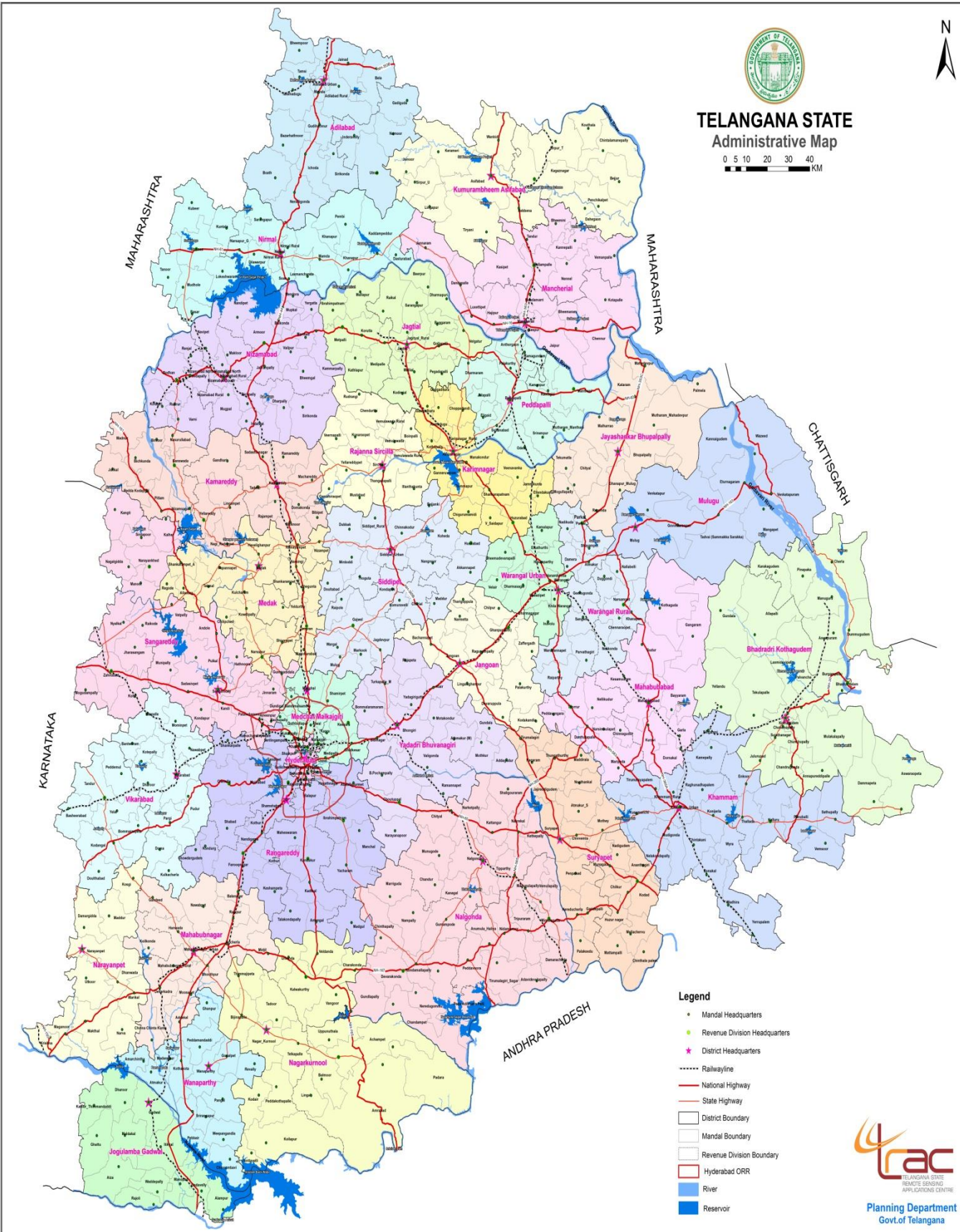
f	No. of Doctors in all Govt. Hospitals (including contract Doctors)	Nos.	2016-17	29
g	No. of Beds in all Govt. Hospitals	Nos.	2016-17	150
14	Education:			
14.a	No. of Institutions:			
a	Degree Colleges (including Private and Aided)	Nos.	2016-17	8
b	Junior Colleges	Nos.	2016-17	15
c	Schools (including Elementary, UPS, High Schools and Higher Secondary Schools)	Nos.	2016-17	563
d	Engineering Colleges (including Private)	Nos.	2016-17	0
e	Polytechnic (including Private)	Nos.	2016-17	1
f	Medical Colleges (including Private)	Nos.	2016-17	0
14.b	Students enrolled in Colleges:			
a	Degree Colleges (including Private and Aided)	Nos.	2016-17	3661
b	Junior Colleges	Nos.	2016-17	3408
c	Schools (including Elementary, UPS, High Schools and Higher Secondary Schools)	Nos.	2014-15	50696
15	WOMEN & CHILD WELFARE			
1	ICDS			
a	ICDS Projects	Nos.	2016-17	2
b	Anganwadi Centres	Nos.	2016-17	512
c	Anganwadi Helpers	Nos.	2016-17	426
d	Anganwadi Workers	Nos.	2016-17	487
e	Children Enrolled	Nos.	2016-17	20,000
16	RURAL DEVELOPMENT			

a	Self Help Groups	Nos.	2018-19	7893
b	SHG Members	Nos.	2018-19	80443
c	SHGs provided with Bank Credit	Nos.	2018-19	1606
d	Total amount of bank credit provided	Rs. in Lakhs	2018-19	5589
17	Post Offices			
a	Head Post Offices	Nos.	2017-18	0
b	Sub-Post Offices	Nos.	2017-18	0
c	Branch Post Offices	Nos.	2017-18	53
18	LAW AND ORDER			
	Police Stations	Nos.	2017-18	12



TELANGANA STATE Administrative Map

0 5 10 20 30 40
KM



Planning Department
Govt. of Telangana