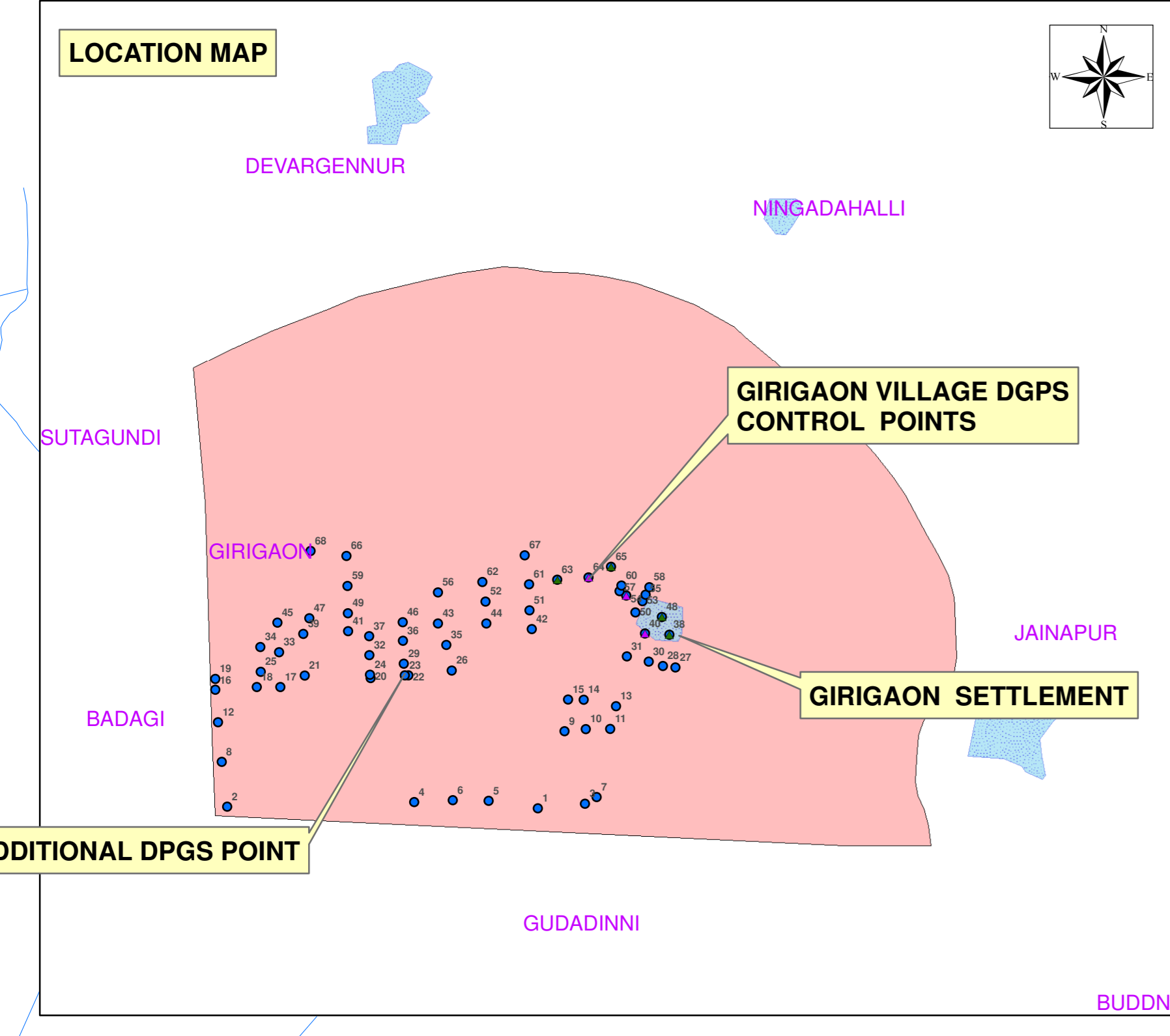
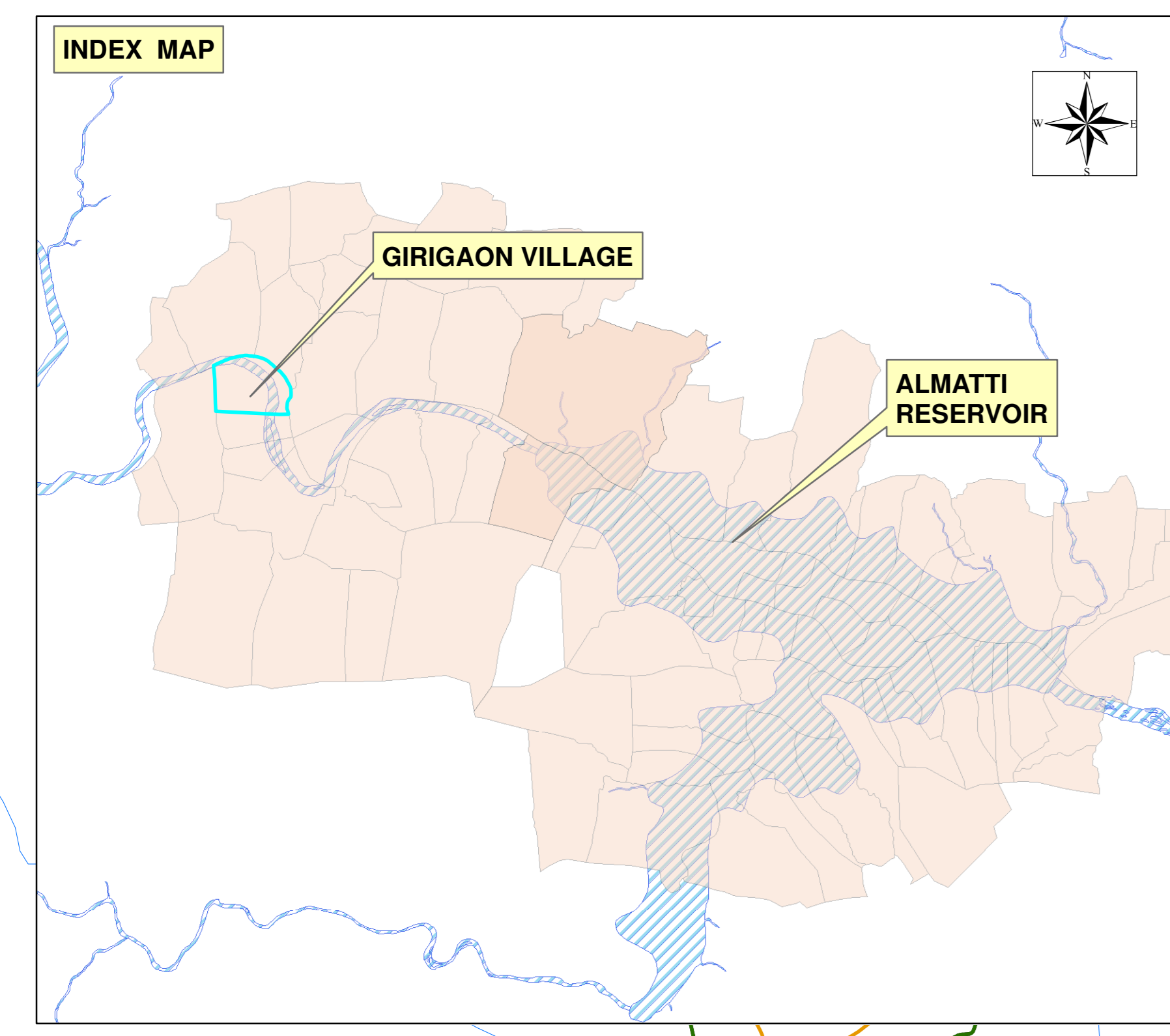


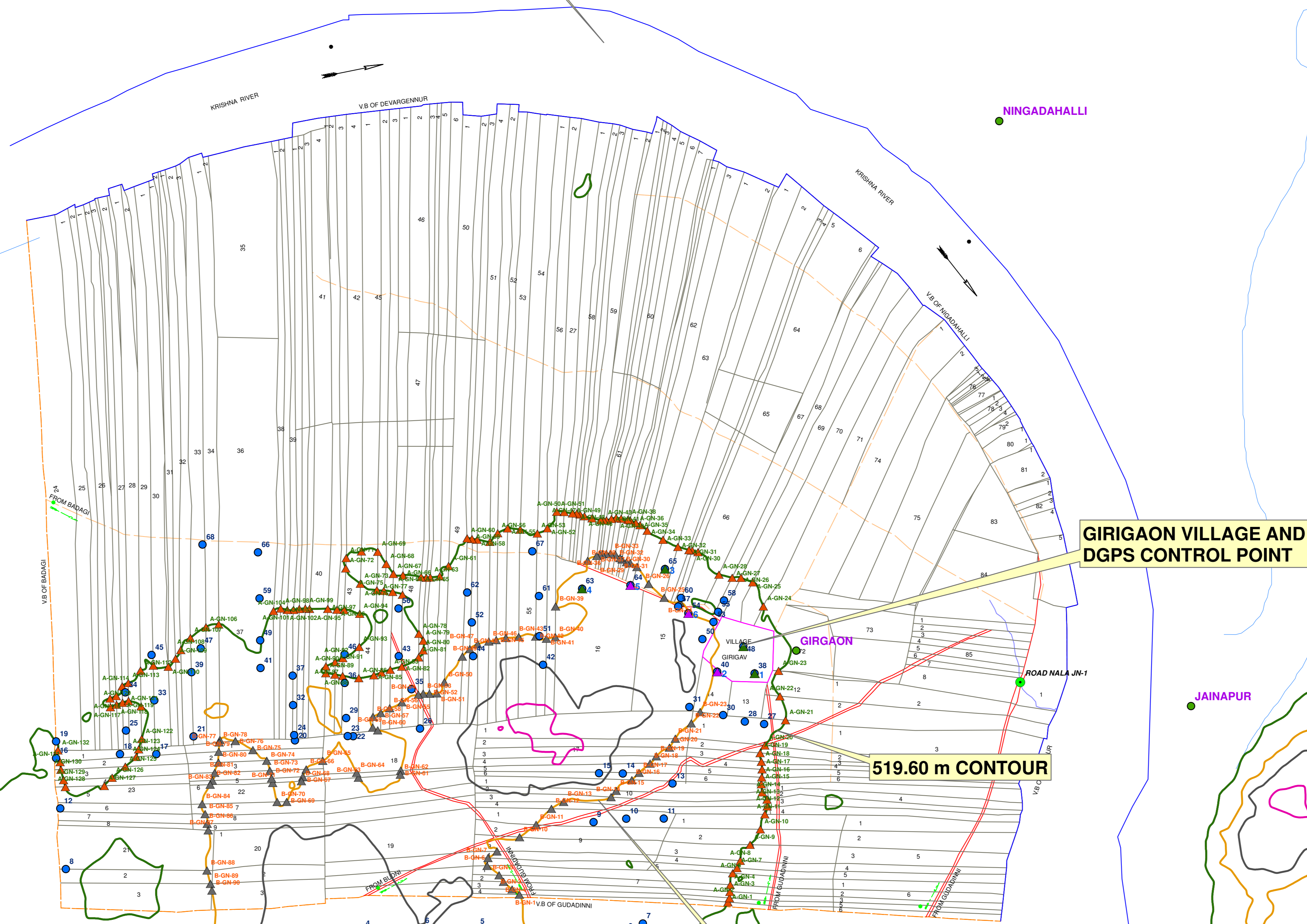
INDICATIVE MAP SHOWING THE ALMATTI SUBMERGENCE GIRIGAON VILLAGE FRL CONTOUR

1:7,920



SL NO	EASTING	NORTHING	LATITUDE	LONGITUDE	ELEVATION(M)	CODE
1	55733.478	1817911.592	16°26'31.446"N	75°32'12.739"E	523.733	A 431
2	555866.500	1817919.936	16°26'31.841"N	75°32'20.946"E	521.701	A 392
3	557533.071	1817933.005	16°26'32.124"N	75°32'20.145"E	521.226	A 430 RD-ROAD
4	556737.747	1817940.907	16°26'32.451"N	75°32'19.327"E	529.580	A 434
5	557084.461	1817947.106	16°26'32.622"N	75°32'5.019"E	525.508	A 432
6	556917.356	1817949.198	16°26'32.704"N	75°31'59.384"E	527.225	A 433
7	557587.537	1817963.793	16°26'33.121"N	75°32'21.985"E	521.339	A 428 RD-ROAD
8	555840.413	1818128.762	16°26'38.639"N	75°31'23.084"E	521.677	A 385
9	557437.910	1818270.878	16°26'43.128"N	75°32'16.967"E	522.620	A 426
10	557537.157	1818281.205	16°26'43.455"N	75°32'20.315"E	521.190	A 427
11	557651.016	1818281.628	16°26'43.459"N	75°32'24.154"E	521.337	A 428 CL-CULVERT
12	555833.789	1818312.509	16°26'44.527"N	75°31'22.547"E	521.243	A 384
13	557677.549	1818387.869	16°26'46.918"N	75°32'25.058"E	521.877	A 423 RD-ROAD
14	557526.755	1818418.183	16°26'47.914"N	75°32'19.976"E	525.589	A 424 RD-ROAD
15	557454.743	1818419.033	16°26'47.948"N	75°32'17.548"E	528.113	A 425
16	555810.871	1818464.642	16°26'49.572"N	75°31'22.117"E	519.617	A 382
17	556134.214	1818476.802	16°26'49.942"N	75°31'32.347"E	521.689	A 376
18	556004.208	1818476.841	16°26'49.952"N	75°31'28.642"E	520.340	A 383
19	555810.833	1818515.322	16°26'51.221"N	75°31'22.121"E	519.570	A 383
20	556533.993	1818518.372	16°26'51.259"N	75°31'46.507"E	522.955	A 394
21	556227.118	1818530.330	16°26'51.675"N	75°31'36.167"E	522.896	A 375
22	556710.598	1818531.171	16°26'51.661"N	75°31'52.404"E	524.151	A 401 CL-CULVERT
23	556693.698	1818531.540	16°26'51.675"N	75°31'51.894"E	523.929	A 400 RD-ROAD
24	556531.731	1818534.338	16°26'51.779"N	75°31'46.432"E	522.294	A 393
25	556022.348	1818548.045	16°26'52.268"N	75°31'29.256"E	521.509	A 380
26	556912.763	1818554.243	16°26'52.394"N	75°31'59.283"E	525.103	A 402 RD-ROAD
27	557954.593	1818568.097	16°26'52.755"N	75°32'34.417"E	520.320	A 422
28	557896.567	1818575.434	16°26'52.999"N	75°32'32.454"E	520.283	A 421
29	556688.964	1818586.072	16°26'53.449"N	75°31'51.739"E	521.756	A 399
30	557830.514	1818595.177	16°26'53.647"N	75°32'30.235"E	521.853	A 420
31	557728.453	1818619.656	16°26'54.453"N	75°32'26.796"E	525.654	A 419
32	556528.525	1818625.377	16°26'54.742"N	75°31'46.332"E	520.641	A 395
33	556108.452	1818639.686	16°26'55.244"N	75°31'32.167"E	520.406	A 377
34	556001.468	1818663.926	16°26'56.047"N	75°31'29.203"E	519.654	A 379
35	556886.977	1818673.305	16°26'56.271"N	75°31'58.424"E	523.532	A 403
36	556684.556	1818692.246	16°26'56.905"N	75°31'51.676"E	521.035	A 398
37	556527.238	1818714.364	16°26'57.638"N	75°31'46.297"E	520.605	A 396
38	557925.945	1818721.272	16°26'57.742"N	75°32'33.465"E	520.090	GG 6 WT-WATER TANK
39	556219.945	1818724.786	16°26'58.047"N	75°32'15.968"E	522.118	A 374
40	557812.502	1818726.496	16°26'57.922"N	75°32'29.647"E	523.857	GG 5 RD-ROAD
41	556429.949	1818737.628	16°26'58.404"N	75°31'43.018"E	521.028	A 368
42	557285.045	1818747.236	16°26'58.643"N	75°32'11.855"E	526.712	A 409
43	556848.138	1818773.365	16°26'59.531"N	75°31'57.123"E	517.987	A 404
44	557073.622	1818773.451	16°26'59.535"N	75°32'14.272"E	525.031	A 408
45	556099.858	1818777.089	16°26'59.716"N	75°31'31.897"E	518.926	A 378
46	556684.226	1818779.164	16°26'59.733"N	75°31'51.596"E	520.514	A 397
47	556248.857	1818797.409	16°27'0.364"N	75°31'36.916"E	520.436	A 373
48	557891.656	1818802.993	16°27'0.405"N	75°32'32.316"E	522.417	GG BASE 1
49	556428.758	1818821.290	16°27'1.187"N	75°31'42.985"E	519.546	A 414
50	557768.002	1818825.066	16°27'1.134"N	75°32'28.148"E	525.468	A 416
51	557274.357	1818834.163	16°27'1.473"N	75°32'11.502"E	523.983	A 410
52	557069.595	1818875.754	16°27'2.844"N	75°32'4.676"E	523.111	A 407
53	557801.407	1818876.986	16°27'2.821"N	75°32'29.279"E	522.860	A 415
54	557725.566	1818903.556	16°27'3.692"N	75°32'26.724"E	524.994	GG 1
55	557815.522	1818907.765	16°27'3.821"N	75°32'29.758"E	519.967	A 417
56	556847.749	1818918.130	16°27'4.242"N	75°31'57.123"E	519.382	A 405
57	557694.657	1818923.795	16°27'4.353"N	75°32'25.684"E	525.382	A 413 RD-ROAD
58	557833.242	1818942.172	16°27'4.939"N	75°32'30.359"E	521.678	A 418
59	556426.813	1818948.447	16°27'5.265"N	75°31'42.931"E	518.056	A 370
60	557703.015	1818949.705	16°27'5.196"N	75°32'25.968"E	522.646	A 414
61	557272.637	1818955.670	16°27'5.427"N	75°32'11.455"E	523.101	A 411
62	557055.375	1818966.396	16°27'5.795"N	75°32'4.129"E	520.757	A 406
63	557403.620	1818977.803	16°27'6.136"N	75°32'15.874"E	526.699	GG 3 WT-WATER TANK
64	557494.894	1818988.482	16°27'6.471"N	75°32'20.808"E	525.887	GG 2
65	557654.774	1819037.539	16°27'6.958"N	75°32'24.342"E	529.940	GG 4 WT-WATER TANK
66	556421.976	1819087.889	16°27'9.803"N	75°31'42.787"E	519.118	A 371
67	557252.615	1819090.900	16°27'9.837"N	75°32'10.792"E	520.716	A 412
68	556254.199	1819111.540	16°27'10.587"N	75°31'37.124"E	517.936	A 372

SL NO	EASTING	NORTHING	LATITUDE	LONGITUDE	ELEVATION(M)	CODE
1	557925.945	1818721.272	16°26'57.742"N	75°32'33.465"E	520.090	GG 6 WT-WATER TANK
2	557812.502	1818726.496	16°26'57.922"N	75°32'29.647"E	523.857	GG 5 RD-ROAD
3	557654.774	1819037.539	16°27'6.958"N	75°32'24.342"E	529.940	GG 4 WT-WATER TANK
4	557403.620	1818977.803	16°27'6.136"N	75°32'15.874"E	526.699	GG 3 WT-WATER TANK
5	557494.894	1818988.482	16°27'6.471"N	75°32'20.808"E	525.887	GG 2
6	557725.566	1818903.556	16°27'3.692"N	75°32'26.724"E	524.994	GG 1
7	557891.656	1818802.993	16°27'0.405"N	75°32'32.316"E	522.417	GG BASE 1



Legend

- ALMATTI VILLAGES
- ▲ SECONDARY DGPS CONTROL POINTS
- ▲ TERTIARY DGPS CONTROL POINTS
- ADDITIONAL DGPS CONTROL POINTS
- ▲ VIRTUAL STONE 519.6
- ▲ VIRTUAL STONE 524.256 M
- ROAD NALA JUNCTION
- 519.6 m CONTOUR
- 524.26 m CONTOUR
- 527 m CONTOUR
- 530 m CONTOUR
- PARCELS
- RIVER
- ROADS
- STREAM

KRISHNA BHAYGA JALA NIGAM LIMITED
(A GOVERNMENT OF KARNATAKA UNDERTAKING)

FRL SURVEY OF ALMATTI RESERVOIR SUBMERGENCE USING 3D MOBILE LIDAR

ASSISTANT EXECUTIVE ENGINEER KRISHNA BHAYGA JALA NIGAM LIMITED FRL SUB DIVISION NO:1/2, CAMP ALMATTI	EXECUTIVE ENGINEER KRISHNA BHAYGA JALA NIGAM LIMITED DAM DIVISION, ALMATTI
SUPERINTENDING ENGINEER KRISHNA BHAYGA JALA NIGAM LIMITED DAM CIRCLE, ALMATTI	CHIEF ENGINEER KRISHNA BHAYGA JALA NIGAM LIMITED DAM ZONE, ALMATTI

INFYCONS CREATIVE SOFTWARE PVT LTD,
7/1, FIRST FLOOR, 80 FEET ROAD,
INDIRANAGAR, BANGALORE-38
PHONE: 080-25290653, 25217381
FAX: 91-80-25207502
WEB: www.infycons.com

SCALE: AS INDICATED DWG NO:10/4 VILLAGE: GIRIGAON CODE:GN