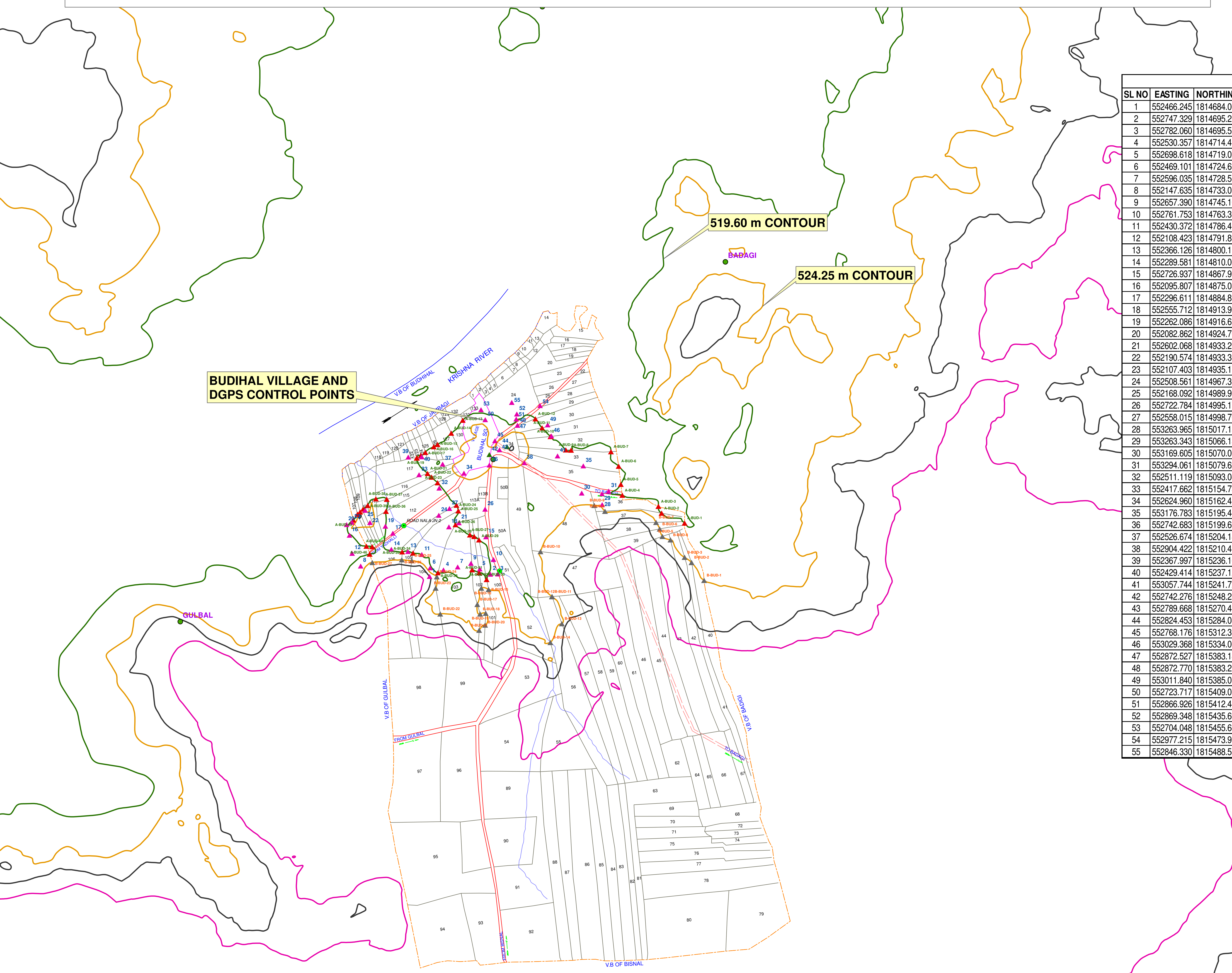
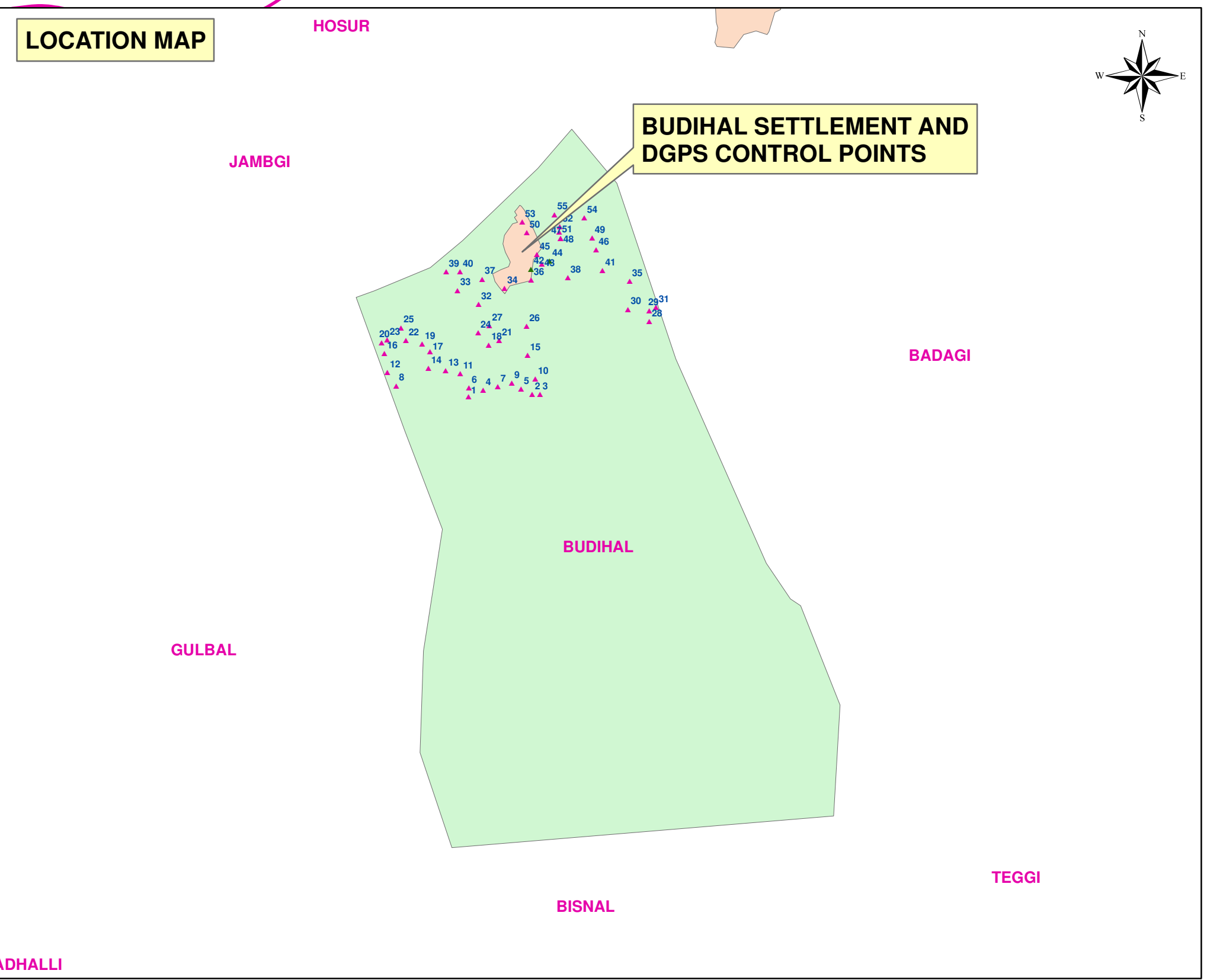
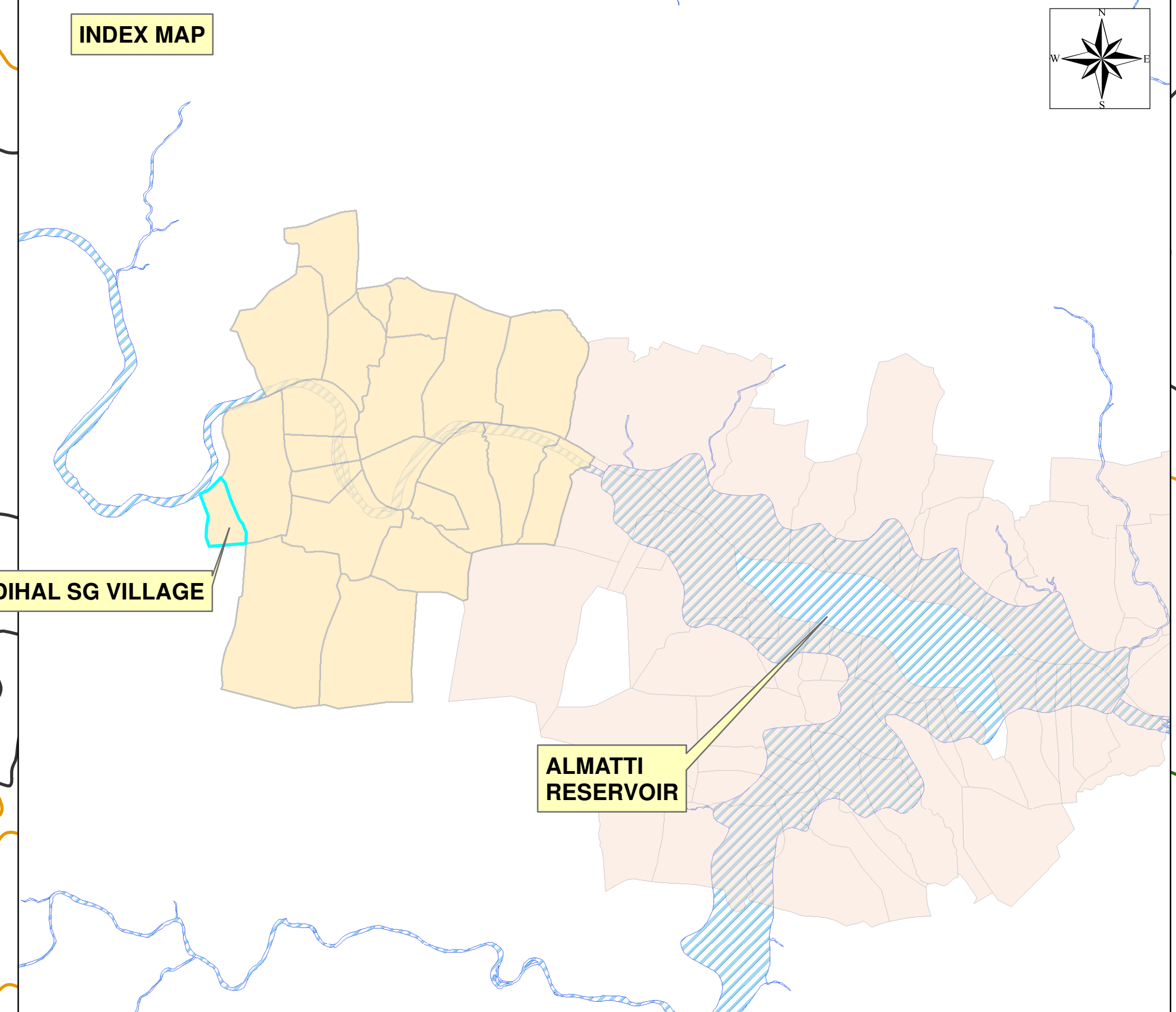


INDICATIVE MAP SHOWING THE ALMATTI SUBMERGENCE BUDIHAL SG VILLAGE FRL CONTOUR

1:7,920



BUDIHAL SG DGPS CONTROL POINTS						
SL NO	EASTING	NORTHING	LATITUDE	LONGITUDE	ELEVATION (M)	CODE
1	552466.245	1814684.061	16° 24' 46.814"N	75° 29' 29.019"E	527.022	AL 501
2	552747.329	1814695.268	16° 24' 47.156"N	75° 29' 38.498"E	520.065	AL 506
3	552782.060	1814695.522	16° 24' 47.162"N	75° 29' 39.668"E	522.196	AL 507 RD- ROAD
4	552530.357	1814714.413	16° 24' 47.796"N	75° 29' 31.184"E	515.793	AL 502
5	552698.618	1814719.020	16° 24' 47.933"N	75° 29' 36.857"E	517.844	AL 505
6	552469.101	1814724.630	16° 24' 48.134"N	75° 29' 29.119"E	520.585	AL 500
7	552596.035	1814728.513	16° 24' 48.250"N	75° 29' 33.399"E	518.502	AL 503
8	552147.635	1814733.050	16° 24' 48.433"N	75° 29' 18.281"E	522.567	AL 489
9	552657.390	1814745.105	16° 24' 48.785"N	75° 29' 35.469"E	518.231	AL 504
10	552761.753	1814763.315	16° 24' 49.370"N	75° 29' 38.989"E	520.206	AL 508 RD- ROAD
11	552430.372	1814786.478	16° 24' 50.150"N	75° 29' 27.819"E	519.354	AL 499
12	552108.423	1814791.839	16° 24' 50.350"N	75° 29' 16.964"E	517.080	AL 488
13	552366.126	1814800.119	16° 24' 50.599"N	75° 29' 25.654"E	519.923	AL 498
14	552289.581	1814810.004	16° 24' 50.926"N	75° 29' 23.073"E	518.817	AL 497
15	552726.937	1814867.912	16° 24' 52.776"N	75° 29' 37.824"E	520.733	AL 509 RD- ROAD
16	552095.807	1814875.037	16° 24' 53.577"N	75° 29' 16.545"E	519.175	AL 490
17	552296.611	1814884.851	16° 24' 53.361"N	75° 29' 23.317"E	515.996	AL 496
18	552555.712	1814913.968	16° 24' 54.289"N	75° 29' 32.055"E	517.875	AL 512
19	552262.086	1814916.679	16° 24' 54.399"N	75° 29' 22.155"E	519.746	AL 495
20	552082.862	1814924.701	16° 24' 54.675"N	75° 29' 16.113"E	517.809	AL 491
21	552602.068	1814933.208	16° 24' 54.911"N	75° 29' 33.620"E	520.221	AL 511
22	552190.574	1814933.380	16° 24' 54.949"N	75° 29' 19.745"E	524.971	AL 494
23	552107.403	1814935.178	16° 24' 55.140"N	75° 29' 16.941"E	521.727	AL 492
24	552508.561	1814967.367	16° 24' 56.299"N	75° 29' 30.470"E	516.489	AL 513
25	552168.092	1814989.903	16° 24' 56.790"N	75° 29' 18.992"E	523.000	AL 493
26	552722.784	1814995.170	16° 24' 56.918"N	75° 29' 37.695"E	521.235	AL 510 RD- ROAD
27	552598.015	1814998.708	16° 24' 57.460"N	75° 29' 32.140"E	518.685	AL 514
28	553263.965	1815017.152	16° 24' 57.590"N	75° 29' 55.944"E	523.719	A 346
29	553263.343	1815066.135	16° 24' 58.184"N	75° 29' 55.927"E	522.149	A 345
30	553169.605	1815070.060	16° 24' 58.319"N	75° 29' 52.766"E	523.169	A 344
31	553294.061	1815079.621	16° 24' 58.621"N	75° 29' 56.963"E	520.903	A 347
32	552511.119	1815093.048	16° 25' 00.119"N	75° 29' 30.566"E	519.258	AL 515
33	552417.662	1815154.736	16° 25' 02.135"N	75° 29' 27.420"E	518.162	AL 516
34	552624.960	1815162.423	16° 25' 02.368"N	75° 29' 34.410"E	525.137	AL 520 RD- ROAD
35	553176.783	1815195.440	16° 25' 03.399"N	75° 29' 53.019"E	521.327	A 343
36	552742.683	1815199.601	16° 25' 03.569"N	75° 29' 38.383"E	524.531	BH 5 RD- ROAD
37	552526.674	1815204.186	16° 25' 03.735"N	75° 29' 31.100"E	521.656	AL 519
38	552904.422	1815210.411	16° 25' 03.908"N	75° 29' 43.837"E	524.240	BH 6 RD- ROAD
39	552367.997	1815236.162	16° 25' 04.789"N	75° 29' 25.752"E	516.913	AL 517
40	552429.414	1815237.127	16° 25' 04.815"N	75° 29' 27.823"E	519.834	AL 518
41	553057.744	1815241.727	16° 25' 04.915"N	75° 29' 49.009"E	520.634	A 342
42	552742.276	1815248.237	16° 25' 05.152"N	75° 29' 38.373"E	525.457	BH 4 WT-WATER TANK
43	552789.668	1815270.438	16° 25' 05.871"N	75° 29' 39.973"E	525.548	BH 7 RD- ROAD
44	552824.453	1815284.087	16° 25' 06.312"N	75° 29' 41.147"E	529.680	BH BASE
45	552768.176	1815312.383	16° 25' 07.237"N	75° 29' 39.251"E	524.051	BH 1 RD- ROAD
46	553029.368	1815334.062	16° 25' 07.922"N	75° 29' 48.059"E	519.266	A 341
47	552872.527	1815383.183	16° 25' 08.533"N	75° 29' 42.776"E	522.796	A 334
48	552872.770	1815383.229	16° 25' 08.535"N	75° 29' 42.784"E	522.809	A 335
49	553011.840	1815385.078	16° 25' 08.584"N	75° 29' 47.473"E	517.769	A 340
50	552723.717	1815409.074	16° 25' 10.387"N	75° 29' 37.760"E	521.568	BH 3 T-TEMPLE
51	552866.926	1815412.446	16° 25' 10.486"N	75° 29' 42.589"E	519.115	A 336
52	552869.348	1815435.660	16° 25' 11.241"N	75° 29' 42.673"E	518.770	A 337
53	552704.048	1815455.646	16° 25' 11.905"N	75° 29' 37.101"E	519.762	BH 2 T-TEMPLE
54	552977.215	1815473.913	16° 25' 12.477"N	75° 29' 46.313"E	518.538	A 339
55	552846.330	1815488.582	16° 25' 12.965"N	75° 29' 41.901"E	516.935	A 338

LEGEND

- ALMATTI VILLAGES
- ▲ SECONDARY DGPS CONTROL POINT
- ▲ TERTIARY DGPS CONTROL POINT
- ▲ ROAD NALA JN
- ▲ VIRTUAL STONE 519.6 M
- ▲ VIRTUAL STONE 524.256 M
- 519.6 m FRL CONTOUR
- 524.256 m FRL CONTOUR
- 527 m FRL CONTOUR
- 530 m FRL CONTOUR
- PARCELS
- RIVER
- ROADS
- STREAM

KRISHNA BHAYGA JALA NIGAM LIMITED
(A GOVERNMENT OF KARNATAKA UNDERTAKING)

FRL SURVEY OF ALMATTI RESERVOIR SUBMERGENCE USING 3D MOBILE LIDAR

ASSISTANT EXECUTIVE ENGINEER KRISHNA BHAYGA JALA NIGAM LIMITED FRL SUB DIVISION NO:12, CAMP ALMATTI	EXECUTIVE ENGINEER KRISHNA BHAYGA JALA NIGAM LIMITED DAM DIVISION, ALMATTI
SUPERINTENDING ENGINEER KRISHNA BHAYGA JALA NIGAM LIMITED DAM CIRCLE, ALMATTI	CHEF ENGINEER KRISHNA BHAYGA JALA NIGAM LIMITED DAM ZONE, ALMATTI

INFYCONS CREATIVE SOFTWARE PVT LTD,
7/1, FIRST FLOOR, 80 FEET ROAD,
INDIRANAGAR, BANGALORE-38
PHONE: 080-25290633, 2527381
FAX: 91-80-25207502
WEB: www.infycons.com

SCALE: AS INDICATED DWG NO:5-4 VILLAGE: BUDIHAL SG CODE: BUD