

**OA No. 360 of 2018 :** State Environment Department may collect **District Environmental Plans (DEPs)** and finalize the **State Environmental Plan (SEP)** to integrate the **National Environmental Plan (NEP)**.

**MAJOR ELEMENTS FOR EP :**

- socio-economic development status,
- urban development status,
- regional development status,
- natural resources and land use management,
- infrastructure system,
- governance frameworks, etc.

**DIRECTIONS FROM HON'BLE NGT:**

**Vide Order dated 15.07.2019 in O.A. No. 710/2017:**

- in view of Constitutional provisions under Articles 243 G, 243 W, 243 ZD (as a part of **District Planning Committee**) read with **Schedules 11 and 12 and Rule 15 of the Solid Waste Management Rules, 2016**, it is necessary to have a **District Environment Plan (DEP)**;
- DEP is to be operated by a District Committee under chair of DMs with representatives from Panchayats, Local Bodies, Regional Officers, State PCB and a suitable officer representing the administration;
- DEPs and Constitution of District Committee to be placed on the District website;
- Monthly report of monitoring by the DMs may be furnished to the Chief Secretary and may be placed on the website of the District;
- To be provided an **institutional mechanism** for effective monitoring.

**Vide order dated 12.09.2019 in O.A. No. 360 of 2018 :**

Such information is to be furnished by the CS indicating:

- Current status and compliance to provisions under statute
- Desirable level of compliance in terms of statutes
- Gap between current status, desired levels and proposal of attending the gap with time lines
- Name and designation of designated officer for ensuring

**DISTRICT ENVIRONMENT PLAN (DEP)**

- based on 7 (seven) thematic area as a model report for all the state

**1.0 Waste Management Plan**

- 1.1 Solid Waste Management Plan (for each ULB)
- 1.2 Plastic Waste Management (for each ULB)
- 1.3 C & D (Construction & Demolished) Waste Management
- 1.4 Biomedical Waste Management (for each ULB)
- 1.5 Hazardous Waste Management
- 1.6 E-Waste Waste Management

**2.0 Water Quality Management Plan**

**3.0 Domestic Sewage Management Plan**

**4.0 Industrial Waste Water Management Plan**

**5.0 Air Quality Management Plan**

**6.0 Mining Activity Management plan**

**7.0 Noise Pollution Management Plan**

## SOLID WASTE MANAGEMENT PLAN FOR KAKCHING

Table 1.1 (i): Population and Solid Waste Generated Status as on 2011 census

Blocks/ Sub-District	No. of Towns	No. of Villages	Households			Population as per 2011 census			Solid Waste Generated in Tones per Day
			Urban	Rural	Total	Urban	Rural	Total	
KAKCHING KHUNOU MUNICIPAL COUNCIL	1		2278		2278	14284		14284	5
KAKCHING MUNICIPAL COUNCIL	1		7144		1669	32138		32138	11.24
SUGNU MUNICIPAL COUNCIL	1	NIL	1094	NIL	1094	6442	NIL	6442(PP)	2.25

**Note: Taking 0.35 kg / day / capita of Solid Waste Generation as per CPHEEO Manual**

Table 1.1 (ii - a): Inventory of Solid Waste Generation

Blocks / Sub-districts	Local Bodies (LBs)	(A) Solid Waste generated in TPD						No. of bulk waste generated	Time Line for Compliance	Actor
		Total Waste	Wet Waste	Dry Waste	C & D waste	Street Sweeping	Domestic Hazardous Waste			
KAKCHING	KAKCHING MUNICIPAL COUNCIL	11.24	5.00	6.24	NOT ASSESSED	1.5	NOT ASSESSED	NIL	31 <sup>st</sup> October, 2021	ULBs PWD TCI RD&PR PWD TA&H or any appropriate DLO
WAIKHONG SUB-DIVISION	SUGNU MUNICIPAL COUNCIL	2.25	1.5	0.75	NOT ASSESSED	NOT ASSESSED	NOT ASSESSED	NIL	1 <sup>st</sup> December, 2021	
WAIKHONG SUB-DIVISION	KAKCHING KHUNOU MUNICIPAL COUNCIL	5	3	2	NA	NA	NA	NA	1 <sup>st</sup> December, 2021	

Table 1.1(ii - b): Inventory of Segregated Solid Waste Collection

Towns / Blocks/ Villages	(B) Solid Waste Collected in MT / Day						Gap in % between (A) & (B)	Time Line for compliance	Actor (any appropriate DLO)
	Total Waste	Wet Waste	Dry Waste	C & D waste	Street Sweeping	Domestic Hazardous Waste			
KAKCHING KHUNOU MUNICIPAL COUNCIL	4.1	2.5	1.6	NA	NA	NA	18%	1 <sup>st</sup> December, 2021	Executive Officer
KAKCHING MUNICIPAL COUNCIL	6.21	2.21	4.0	NOT ASSESSED	1.5	NOT ASSESSED	44.75%	31 <sup>st</sup> OCTOBER, 2021	ULBs
SUGNU MUNICIPAL COUNCIL	2	1	1	NOT ASSESSED	NOT ASSESSED	NOT ASSESSED	11.11%	1 <sup>st</sup> DECEMBER, 2021	Executive Officer

Table 1.1 (iii): Collection of Solid Waste Generated

Towns / Blocks/ Villages	Target Households Qty	Total HH covered under Door-to-Door Collection in %	Home yard Composting in %	Gap between Generated and Collected in %	Time Line for compliance	Actor
KAKCHING KHUNOU MUNICIPAL COUNCIL	2278	80%	20%	18%	1 <sup>st</sup> December, 2021	ULBs for Municipal Areas and Block Development Officers for Block
KAKCHING MUNICIPAL COUNCIL	7144	85%	20%	44.75%	31 <sup>st</sup> OCTOBER, 2021	ULBs
SUGNU MUNICIPAL COUNCIL	1094	80%	20%	11.11%	31 <sup>st</sup> AUGUST, 2021	ULBs/RD&PR/TA& H/Any appropriate DLO

Note : HH = House holds

Table 1.1 (iv): Established Collection of Solid Waste Generated

Towns / Blocks/ Villages	Road Sweeping (in %)		No. of Authorization for waste collection					Time Line for Compliance	Actor
	Mechanical	Manual	SHGs	NGOs	Producers	Waste Pickers	Recycler		
KAKCHING KHUNOU MUNICIPAL COUNCIL	NIL	100	NIL	NIL	NIL	NIL	NIL	31 <sup>st</sup> August, 2021	ULBs / RD&PR / TA&H / any appropriate DLO
KAKCHING MUNICIPAL COUNCIL	NIL	100	NIL	NIL	NIL	NIL	NIL	31 <sup>st</sup> October, 2021	
SUGNU MUNICIPAL COUNCIL	NIL	100	NIL	NIL	NIL	NIL	NIL	31 <sup>st</sup> August, 2021	

Table 1.1 (v) :Infrastructure for Solid Waste Management

Towns / Blocks/ Villages	Bulk Waste Transport		Segregated Waste		Waste Transfer points	Sanitary Land fill	Material Recovery Centre	Time Line Action for Compliance	Actor
	Tractor / Trolleys	Trucks	Tractor / Trolleys	Trucks					
KAKCHING KHUNOU MUNICIPAL COUNCIL	1 TRACTOR	1		1 Tata tipper	1	Allotment under process	Nil	1 <sup>st</sup> December, 2021	ULBs for Municipal Areas and Block development Officers for Block
KAKCHING MUNICIPAL COUNCIL	2 TRACTOR	5 Nos. of 407 Mini TRUCK			Under Construction	0	NIL	31 <sup>st</sup> OCTOBER, 2021	ULBs
SUGNU MUNICIPAL COUNCIL	1 TRACTOR	1 TRUCK		1 407 TATA tipper	1	0	NIL	1 <sup>st</sup> DECEMBER, 2021	ULBs for Municipal Areas and Block development Officers for Block

Table 1.1 (vi): Treatment / Management Facilities for Solid Waste

Towns / Blocks/ Villages	Total Waste Generated	Solid Wastes Treated / Managed in MT / day			Total Wastes Managed / Treated in MT / Day	Gap in % between Generated Waste and Treated	Time Line Action for Compliance	Actor
		Composting	Waste to Energy	Sanitary Landfill				
KAKCHING KHUNOU MUNICIPAL COUNCIL	5	2.5	NIL	NIL	3	40%	1 <sup>st</sup> December, 2021	ULBs / RD&PR / TA&H / any appropriate
KAKCHING	11.24	2.5 (Processed)	NIL	NIL	4.3	61.74%	31 <sup>st</sup>	

**District Level Information Sheet for DEP 2020-2030**

MUNICIPAL COUNCIL		at source through Home composting/Piggery/duck/chicken feeds etc)			(1.8MT dry waste is managed / treated at Council Level  2.5 MT wet waste is managed at source)		OCTOBER, 2021	DLO
SUGNU MUNICIPAL COUNCIL	2.25	1	NIL	NIL	1.5	33.33%	1 <sup>st</sup> December, 2021	

**Table 1.1 (vii) : Notification of By-laws / orders incorporating Solid Waste Management**

Towns / Blocks / Villages	Notification of by-laws / Directions / orders	Implementation of by-laws / Directions / orders	Gap	Time Line Action for Compliance	Actor
KAKCHING KHUNOU MUNICIPAL COUNCIL	DRAFT BYE LAW PUBLISHED IN THE GAZETTE.  FINAL PUBLICATION PENDING			1 <sup>st</sup> December, 2021	ULBs / RD&PR / TA&H / any appropriate DLO
KAKCHING MUNICIPAL COUNCIL	Final Publication of "The Kakching Municipal Waste Management Bye-Laws, 2020" pending with the government.			31 <sup>st</sup> October, 2021	
SUGNU MUNICIPAL COUNCIL	DRAFT BYE LAW PUBLISHED IN THE GAZETTE.  FINAL PUBLICATION PENDING			1 <sup>st</sup> December, 2021	

**Table 1.1 (viii) : Financial for Solid Waste Management**

Towns / Blocks / Villages	CAPEX			OPEX			Time Line Action for Compliance	Actor
	Required	Available	Gap	Required	Available	Gap		
KAKCHING KHUNOU MUNICIPAL COUNCIL	1 JCB, 9 Mini hopper tippers, 1 407 TATA tipper	1 407 TATA Tippers		<b>Fuel:</b> Rs. 2 lakhs per year  <b>Salary:</b>				ULBs / RD&PR / TA&H / any appropriate DLO



**District Level Information Sheet for DEP 2020-2030**

	Approx.. Rs. 34 Lakhs			Rs 6 Lakhs per year for sanitary staffs				
KAKCHING MUNICIPAL COUNCIL	4 Nos of 407 TATA @ Rs. 60,00,000.00	5 Nos. of 407 TATA		<b>Fuel:</b> Rs. 8lakhs per year <b>Salary:</b> Rs 34 Lakhs per year for sanitary staffs				
SUGNU MUNICIPAL COUNCIL	1 JCB 9 Hooper Tippers 1 407 TATA tipper  Approx.. Rs. 34 Lakhs	1 407 TATA Tipper		<b>Fuel:</b> Rs. 2 lakhs per year  <b>Salary:</b> Rs 6 Lakhs per year for sanitary staffs				

**THEME 1.0 : WASTE MANAGEMENT PLAN****Sub-theme 1.2 :Plastic Wase Management Plan****[Compliance of the Plastic Waste Management Rules, 2016]****Section 6 : Responsibility of local body [in Urban Area]**

- Setting up of infrastructure for segregation, collection, storage, transportation, processing, disposal, operationalisation and coordination;
- Creating awareness among all stakeholders about their responsibilities and open burning of plastic waste does not take place;
- Engaging civil societies or groups working with waste pickers;
- Frame bye-laws incorporating the provisions of these rules;

**Section 7: Responsibility of Gram Panchayat [in Rural Area]:**

- Same activities in rural area as in urban area by either on its own Panchayet or by engaging an agency

**Table 1.2 (i): Inventory of Plastic Waste Generation**

<b>Towns / Blocks/ Villages</b>	<b>Estimated quantity of generation MT/Day</b>	<b>No. of Bulk generation units</b>	<b>No. of producers</b>	<b>Linkage with Producers</b>	<b>Linkage with NGOs</b>	<b>Time line for compliance</b>	<b>Responsibility / Actor</b>
KAKCHING KHUNOU MUNICIPAL COUNCIL	0.5	NIL	NIL	NIL	NIL	1 <sup>st</sup> December, 2021	ULBs / RD&PR / TA&H / any appropriate DLO
KAKCHING MUNICIPAL COUNCIL	0.257 MT/day	NIL	NIL	NIL	NIL		
SUGNU MUNICIPAL COUNCIL	0.5	NIL	N/A	NIL	NIL		

Table 1.2 (ii): Segregated / Collection / Disposal / Transported / processed of Plastic Waste

Towns / Blocks/ Villages	Quantity segregated & collected MT/Day		Time line for compliance	Responsibility / Actor
	Door to Door / Households	Commercial Area / Bulk generated area		
KAKCHING KHUNOU MUNICIPAL COUNCIL	0.2	0.3	1 <sup>st</sup> December, 2021	ULBs
KAKCHING MUNICIPAL COUNCIL	0.150MT/day	0.10MT/day	31 <sup>st</sup> October, 2021	
SUGNU MUNICIPAL COUNCIL	0.2	0.3	1 <sup>st</sup> December, 2021	

Table 1.2 (iii) :Implementation of Extended Producers Responsibility (EPR) and Regulation for Plastic Waste

Towns / Blocks/ Villages	Ban on carry bags / Single use Plastics (Yes / NO)	Financial support by producers / brand owners (Rs.)	Infrastructure support by producers / brand owners	No. of collection centre established by producers / brand owners	Sealing of <50 or >50 micron plastic	Time line for compliance	Actor
KAKCHING KHUNOU MUNICIPAL COUNCIL	YES  Ban notified but not implemented	NIL	NIL	NIL	YES	1 <sup>st</sup> December, 2021	ULBs / RD&PR / TA&H / any appropriate DLO
KAKCHING MUNICIPAL COUNCIL	YES (Ban on use of carry bags/single use plastics notified but not yet implemented)	NIL	NIL	NIL	YES	31 <sup>st</sup> October, 2021	
SUGNU MUNICIPAL COUNCIL	YES (Ban on use of carry bags/single use plastics notified but not yet	NIL	NIL	NIL	YES	1 <sup>st</sup> December, 2021	

**District Level Information Sheet for DEP 2020-2030**

	implemented)						

**THEME 1.0 : WASTE MANAGEMENT PLAN****Sub-theme 1.3 :C & D Waste Management Plan**

**[Compliance of the Construction and Demolition Waste Management Rules, 2016, vide No. G.S.R. 317(E), dtd. 29.03. 2016]**

**Section 6 :Duties of local authority**

- issue directions for proper management of construction and demolition waste;
- safe disposal of C & D waste contaminated with industrial hazardous or toxic material or nuclear waste if any;
- make arrangements and place appropriate containers for collection of waste;
- create a sustained system of information, education and communication

**Table 1.3 (i) :Inventory of Construction and Demolition (C & D) Waste Generation**

<b>Towns / Blocks/ Villages</b>	<b>Estimated quantity of generation MT/Day</b>	<b>Issuance of permission by ULBs</b>	<b>Deposition point</b>	<b>Recycling Point</b>	<b>Any by-laws [Yes / No]</b>	<b>Time line for compliance</b>	<b>Responsibility / Actor</b>
KAKCHING KHUNOU MUNICIPAL COUNCIL	NOT ASSESSED	NIL	NIL	NIL	NO	1 <sup>st</sup> December, 2021	ULBs / PWD / RD&PR / TA&H / any appropriate DLO
KAKCHING MUNICIPAL COUNCIL	NOT ASSESSED	NIL	NIL	NIL	NO		
SUGNU MUNICIPAL COUNCIL	NOT ASSESSED	NIL	NIL	NIL	NO	1 <sup>st</sup> December, 2021	

**THEME 1.0 : WASTE MANAGEMENT PLAN****Sub-theme 1.4 :Bio Medical Waste Management Plan**

[Compliance of the Bio-Medical Waste Management Rules, 2016, vide G.S.R. 343(E), dtd. the 28th March, 2016]

**Section 6 :Duties of Municipalities or Corporations, Urban Local Bodies and Gram Panchayats**

- Provide or allocate suitable land for development of common bio-medical waste treatment facilities
- Collect other solid waste from the health care facilities

**Table 1.4 (i) : Inventory of Bio-medical Wastes Generation**

Towns / Blocks/ Villages	Estimated quantity of generation MT/Day	No. of Bedded Hospital	No. of Non- bedded Hospitals	No. of Clinics	No. of veterinary Hospitals	No. of Dental Clinics	No. of Clinical Labs	Time line for compliance	Actor
									Health

**Table 1.4 (ii): Facilities for Bio-medical Wastes Management**

Towns / Blocks/ Villages	No. of CBMWTFs	No. of HCF units Linkage with CBMWTF	No. of HCF Units with ETP	No. of HCF Units Pre-Segregated	Time line for compliance	Actor
						Health

**THEME 1.0 : WASTE MANAGEMENT PLAN****Sub-theme 1.5 :Hazardous Waste Management Plan**

[Compliance of the Hazardous and Other Wastes (Management and Transboundary Movement) Rules, 2016, vide G.S.R. 395 (E), dtd. the 04<sup>th</sup> April, 2016]

No any specific responsibilities to be taken up by the District Administration as per Schedule VII of the Rules

**Sub-theme 1.6: e - Waste Management Plan**

**[Compliance of the E-Waste (Management) Rules, 2016, vide G.S.R. 338(E), dtd. the 23<sup>rd</sup> March , 2016]**

**Schedule IV: Duties of Urban Local Bodies (Municipal Committee or Council or Corporation)**

- To ensure for proper segregation, collection and is channelization to authorized dismantler or recycler;

**Table 1.5 (i): Status and Inventory of Hazardous Wastes Generation**

<b>Towns / Blocks/ Villages</b>	<b>No. of Collection Centres</b>	<b>No. of authorized recyclers</b>	<b>No. of informal recycler</b>	<b>No. of NGOs involved</b>	<b>Does ULB linkage with any recyclers (Yes/No)</b>	<b>No. of awareness</b>	<b>Time line for compliance</b>	<b>Actor</b>
KAKCHING KHUNOU MUNICIPAL COUNCIL	No separate collection centre	NIL	NIL	NIL	NO	NIL	1 <sup>st</sup> December, 2021	ULBs / RD&PR / TA&H / any appropriate DLO
KAKCHING MUNICIPAL COUNCIL	Collected by the Council during door-to-door collection in a separate container	NIL	NIL	NIL	NO	NIL		
SUGNU MUNICIPAL COUNCIL	No separate collection centre	NIL	NIL	NIL	NO	NIL	1 <sup>st</sup> December, 2021	



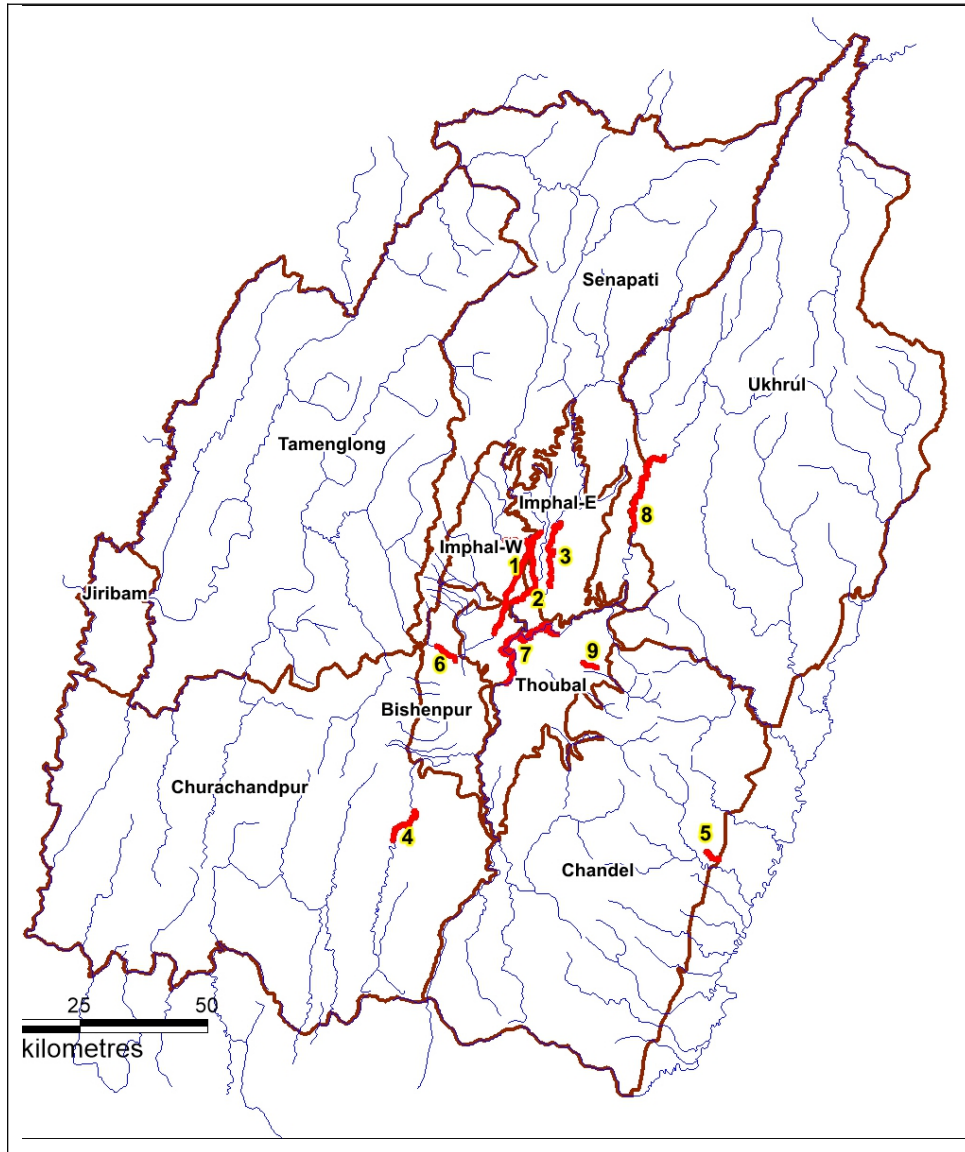


**THEME 2.0: WATER QUALITY MANAGEMENT PLAN**

The CPCB in its report on “**River Stretches for Restoration of Water Quality**” (State wise and Priority wise, September 2018) has identified 351 Polluted River Stretches in the country. Out of these, 9 (nine) stretches of 9 (nine) different rivers has been identified as polluted river stretches in Manipur state under Priority II and Priority V for water quality restoration.

**Priority wise Polluted River Stretches in Manipur**

SN	*Name of River	Total length of the River	River Polluted Stretch identified by CPCB	District	Length of polluted stretches	*BOD Range (Mg/l)	*Criteria for Priority
1	Nambul	55.37 km	Iroisemba to Bishnupur	Imphal West & Bishnupur	26.48 km	3.6 – 23.7	Priority II
2	Lokchao	17.04 km	Bishnupur to Loktak Lake	Bishnupur	5.31 km	4.5	Priority V
3	Imphal	89.24 km	Khurai Lamlong to Samurou	Imphal East, Imphal West	19.98 km	3.4 – 6.4	Priority V
4	Iril	156.50 km	Kangla Siphai to Urup	Imphal East	18.12 km	3.2	Priority V
5	Khuga	79.25 km	Khuga Lake to Churachandpur	Churachandpur	10.92 km	3.1 – 3.6	Priority V
6	Khujairok	10.06 km	Moreh to Maojang	Tengnoupal	4.21 km	4.3	Priority V
7	Manipur	261.00 km	Sekmai jin Bridge to Thoubal	Thoubal, Imphal West	35.00 km	3.6 – 4.3	Priority V
8	Thoubal	142.80 km	Litanto Mapithel Dam	Kamjong, Ukhrul, Thoubal	24.61 km	3.5	Priority V
9	Wangjing	35.08 km	Wangjing to Heirok	Thoubal	3.70 km	4.1 – 4.3	Priority V



**REFERENCES**

Sl.No.	River	Priority	Length (km)
1	Numbul River	II	26.48
2	Imphal River	V	19.98
3	Iril River	V	18.12
4	Khuga River	V	10.92
5	Khujairok River	V	4.21
6	Lokchao/Thongjaorok	V	5.31
7	Manipur River	V	35.00
8	Thoubal River	V	24.61
9	Wangjing River	V	3.70

**Table 2.0 (i): Status and Inventory of Water Resources**

Towns / Blocks/ Villages	Rivers				Lake/Pond/Wetland			Ground Water		Time line for compliance	Actor
	No.	Total Length (km)	Polluted Stretches (km)	No. of Drains meeting rivers	No.	Area (Ha)	No. of Polluted Water body	No. of Functional borewells	No. of non- Functional borewells		
KAKCHING KHUNOU MUNICIPAL COUNCIL	NIL	NA	NA	NA	0	NIL	0			1 <sup>st</sup> Dec, 2021	WRD PHED MGNREGA IWMP ULBs RD&PR TA&H MPCB DoECC
KAKCHING MUNICIPAL COUNCIL											
SUGNU MUNICIPAL COUNCIL	NIL	NA	NA	NA	0	NIL	0			1 <sup>st</sup> Dec, 2021	
Total											

**Table 2.0 (ii): Control of Water Pollution and regulation**

Towns / Blocks/ Villages	Water Quality Data at DM office (Yes/No)	Control of at River Bank (Yes/No)				Time line for compliance	Actor
		Open Defecation	Dumping Solid Waste	Idol Immersion	Encroachment of flood plains		
							WRD PHED MGNREGA IWMP ULBs RD&PR TA&H MPCB DoECC

**Table 2.0 (iii): Awareness and Water Harvesting**

Towns / Blocks / Villages	District level campaign on protection of water resources (No. per year)	Action Plan on Water Harvesting and Conservation				Time line for compliance	Actor
		Rain water Harvesting	Wetlands / Lakes	Community Ponds	Ground Water extraction / Recharge		
							WRD PHED MGNREGA IWMP ULBs RD&PR TA&H MPCB DoECC

**Table 2.0 (iv): Compliance on Rejuvenation of Water Bodies**

Towns / Blocks / Villages	No. of River		No. of Springs		No. of Water Body		No. of Wetlands		Time line for compliance	Actor
	Polluted	Rejuvenated	Polluted	Rejuvenated	Polluted	Rejuvenated	Polluted	Rejuvenated		
										WRD PHED MGNREGA IWMP ULBs RD&PR TA&H MPCB DoECC
<b>Total</b>										

**THEME 3.0: DOMESTIC SEWAGE MANAGEMENT PLAN****Table 3.0 (i): Status and Inventory of Sewage Generated and Treatment Plant**

Towns / Blocks/ Villages	Total sewage Generated in MLD	No. and Capacity of STP in MLD				Quantity of sewage treated in MLD	Gap in % between Sewage generated and treated	Time line for compliance	Actor
		Installed	Treated	Proposed	Under construction				
KAKCHING KHUNOU MUNICIPAL COUNCIL									PHED ULBs DoECC
KAKCHING MUNICIPAL COUNCIL	3.54	NA	NA	NA	NA	NIL	100%	-	
SUGNU MUNICIPAL COUNCIL									

**Table 3.0 (ii): Adequacy of available Infrastructure and Strategic Action Plan for Domestic Sewage Treatment / Management**

Towns / Blocks/ Villages	No. of Towns STPs installed	% of population covered under STP	No. and Capacity of FSSTP in KLD			Towns Needing STP /FSSTP	Time line for compliance	Actor
			Installed	Proposed	Under construction			
KAKCHING KHUNOU MUNICIPAL COUNCIL								PHED ULBs DoECC
KAKCHING MUNICIPAL COUNCIL	NIL	0	0	0				
SUGNU								

MUNICIPAL COUNCIL								

**THEME 4.0: INDUSTRIAL WASTEWATER MANAGEMENT PLAN**

**Table 4.0 (i): Status and Inventory of Industrial Waste Water (IWW) Generation and Treatment**

Towns / Blocks/ Villages	No. of Industries Generated IWW	Quantity of IWW generated	No. and Capacity of CETPs / ETPs in MLD			No. of Industries with CETP / ETPs	Gap	Time line for compliance	Actor
			Installed	Proposed	Under construction				
									TCI Health ULBs

**Table 4.0 (ii): Status of Action Taken for not meeting discharge Standards**

Towns / Blocks/ Villages	No. of Industries not compliance standards	No. of Industries closed for not compliance standards in last 3 months	No. of Industries where Environmental compensation was imposed	Time line for compliance	Actor
					PHED ULBs DoECC

**THEME 5.0: AIR QUALITY MANAGEMENT PLAN**

Air Quality Data to be collected from MPCB

**Table 5.0 (i): Inventor of Air Polluting Agents / Sources**

<b>Towns / Blocks/ Villages</b>	<b>No. of Stone crushers</b>	<b>No. of Brick Farms</b>	<b>No. of Vehicles registered</b>	<b>Others</b>	<b>Time line for compliance</b>	<b>Actor</b>
						TCI Transport

**THEME 6.0: MINING ACTIVITY MANAGEMENT PLAN**

**Table 6.0 (i): Inventor of Mining Activity**

Towns / Blocks/ Villages	No. & Types of Mining Units / activity	No. of Mining Units with licenses	Area covered under mining	Area under illegal Sand mining	Area under illegal Sand mining	Time line for compliance	Actor
							TCI WRD

**Table 6.0 (ii): Compliance to environmental Acts & Rules of Mining Activity**

Towns / Blocks/ Villages	No. No. Mining Units			DSR for minor mining (Yes / No)	Potential area identified for sand / stone mining	Time line for compliance	Actor
	having Environmental clearance	having consent from SPCB	Closed down / suspended operation due to violation of environmental norms				
							TCI WRD

**THEME 7.0: NOISE POLLUTION MANAGEMENT PLAN**

**Table 7.0 (i): Inventor of Noise Polluting Agents / Sources**

Towns / Blocks/ Villages	No. of Noise measuring device	Units creating noise pollution	No. of Complaints on noise pollution in last year		Sign boards for silent zones in towns / cities / sensitive area	Time line for compliance	Actor
			Received	Redressed			
							TCI Transport MPCB



**District Level Information Sheet for DEP 2020-2030**

--	--	--	--	--	--	--	--