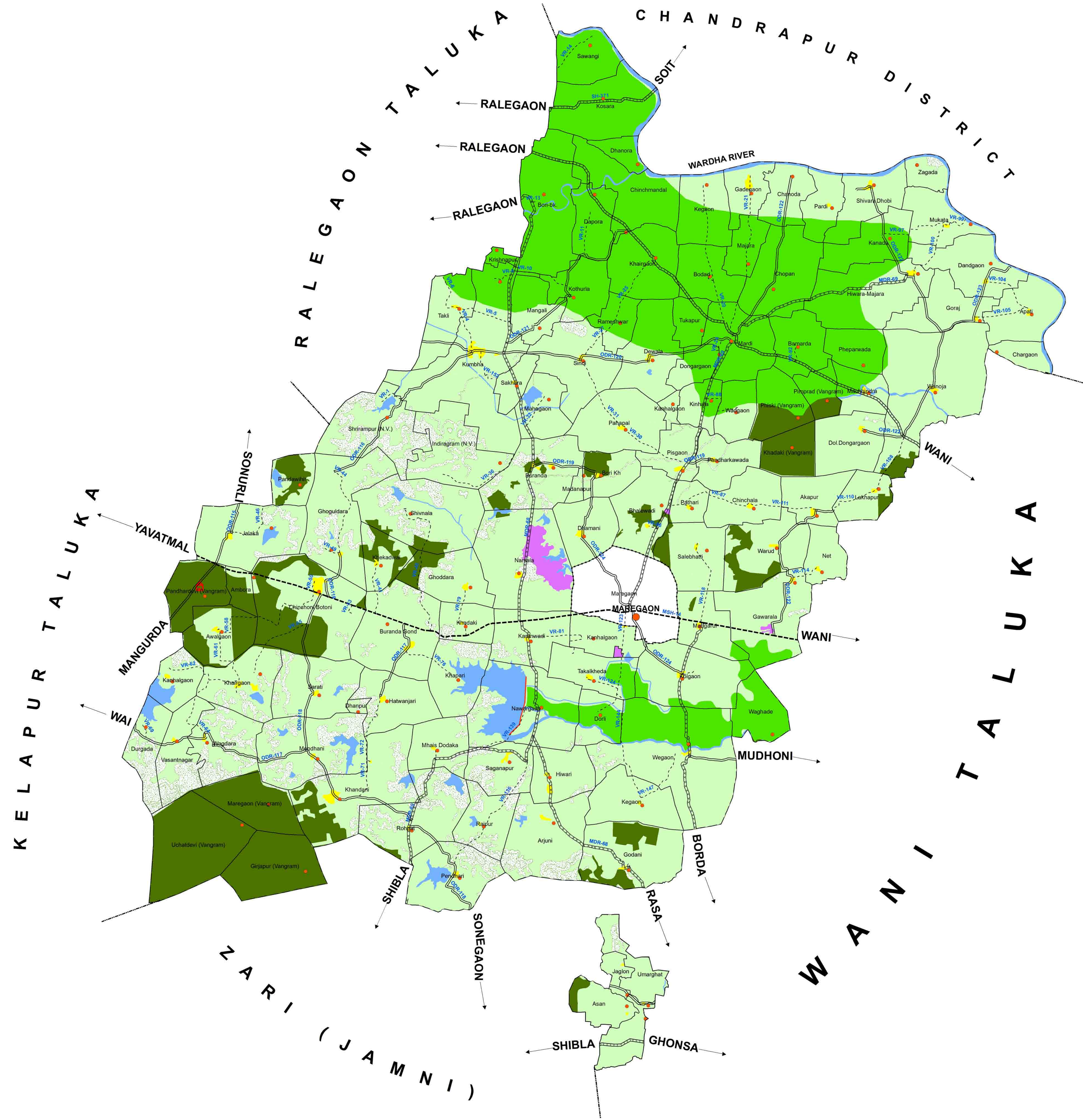


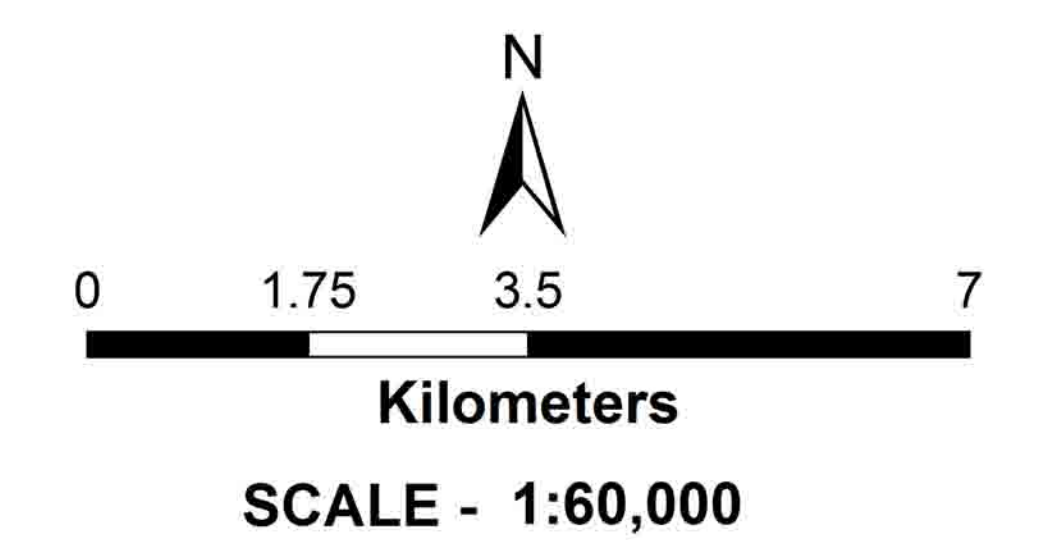
REGIONAL PLAN OF YAVATMAL

EXISTING LAND USE MAP
U/S 13. OF MAHARASHTRA REGIONAL & TOWN PLANNING ACT 1966



REFERENCES

- Region / District Boundary
- Taluka Boundary
- Municipal Limit / Urban Area Boundary
- Village Boundary
- District Head Quarter
- Taluka Head Quarter
- Gaathan
- Roads**
- Road Type**
- National Highway
- Major State Highway
- State Highway
- Major District Road
- Other District Road
- Village Road
- Railway Line
- Railway Station
- Historical / Tourist Places**
- Temple
- Sugar Factory
- Sutgirani
- Tipeswar Sanctuary
- Isapur Sanctuary
- Painganga Sanctuary
- Land Use/Zoning**
- Residential
- Agriculture
- Forest
- MIDC/Industrial/Mining
- Wasteland
- Water Bodies / Rivers, Lakes, Canals Etc.
- Command Area



SOURCE:
Landuse derived from Satellite data of IRS-P6, LISS-3 in the year 2012 on 1:50,000 scale by Maharashtra Remote Sensing Application Centre, Dept. of Planning, Govt. of Maharashtra

TOWN PLANNING OFFICER & MEMBER SECRETARY,
AND
ASST. DIRECTOR OF TOWN PLANNING
YAVATMAL

CHAIRMAN
AND
COLLECTOR, YAVATMAL

**REGIONAL PLANNING BOARD,
YAVATMAL**

REGIONAL PLAN MAREGAON, YAVATMAL