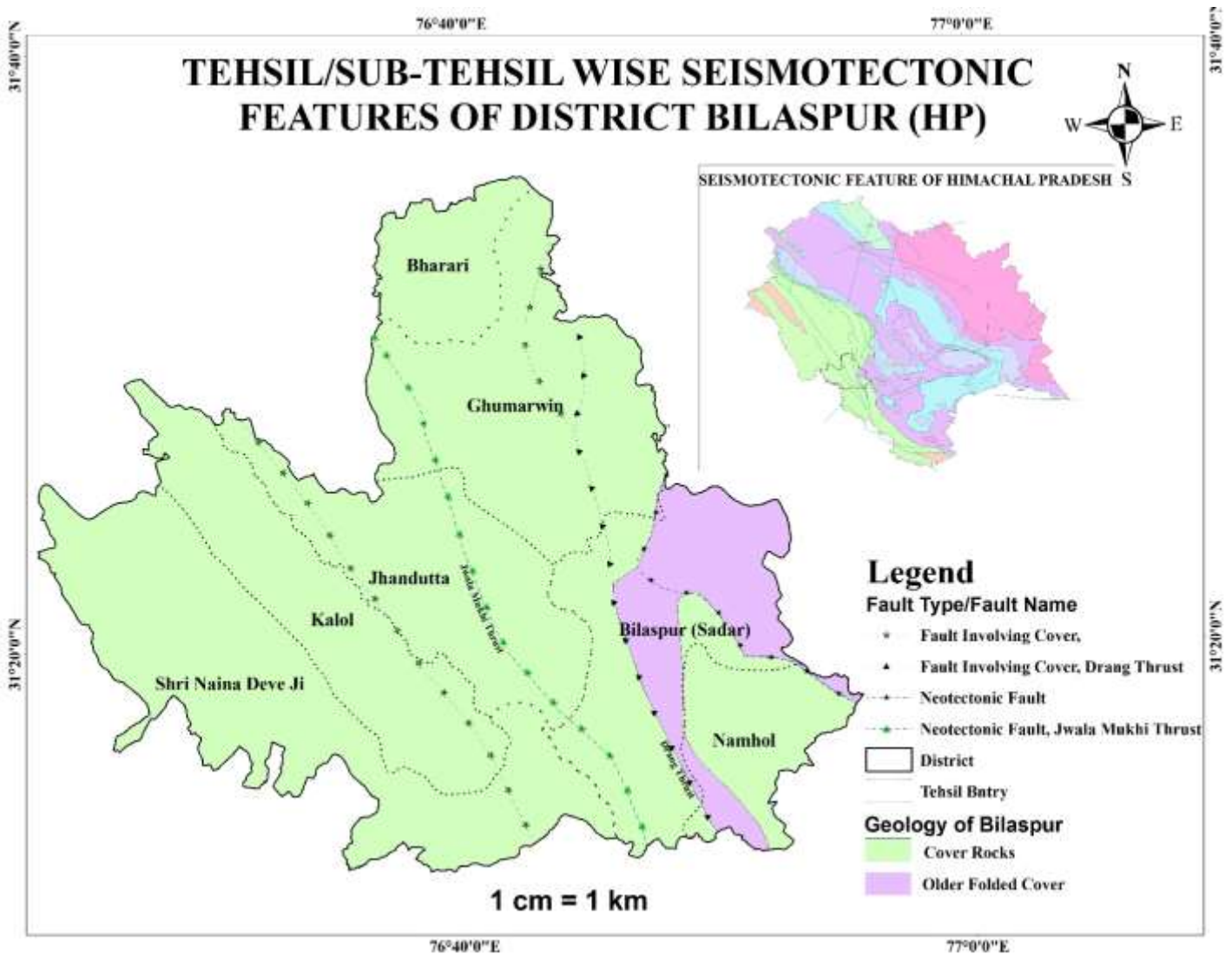


## Risk analysis

<b>Hazard</b>	<b>At Risk</b>	<b>Areas under threat</b>
<b>Earthquake</b>	Human life, cattle life, public infrastructure, environment etc.	Whole Area of the District (sub-tehsil Bharari falls in Zone V)
<b>Forest Fire</b>	Human Life, Cattle Life Loss of Flora Fauna Environment Degradation	<p><b>Sub-Division Sadar Beat name-</b> Lakhanpur, Markand, Namhol, Deoth, Kothipura, Kuddi, Panjgain, Chamyoun, Chhakoh, Binaula, Mungra, Brampukhar.</p> <p><b>Sub-Division Shri Naina Devi Beat name-</b> Baner, Dabat, Behal, Swarghat, Swahan, Gara.</p> <p><b>Sub Division Ghumarwin Beat Name-</b> Panyala, Kamloti, Mryani, Merikathla, Panol, Rahan.</p> <p><b>Sub-Division Jhandutta Beat name-</b> Jhandutta, Sadyar, Samoh, Ghandir, Jhabola, Thuran, Kalol, Talai, Barwar, Gochar, Jhaura.</p>
<b>Road Accidents</b>	Human & property Loss, transportation activities	<p><b>Sub Division Sadar Hot Spots-</b> Near Khalota Temple, Near Gambralu Bridge, Jukhala near School, Kandror Near Bridge, Khayana, Jalpa Mata Temple, Nauni Chowk, ITI Chowak, Kothi Chowak, Ghagas Near Punjabi Dhaba, Chandpur Bridge, Near Hanuman Temple Salapar Bridge, Khaarsi, Jaamli,</p> <p><b>Sub Division Shri Naina Devi Ji Hot Spots- Spots-</b> Asha Majari, Kenchi Mod, Santoshi Mata Temple.</p> <p><b>Sub-Division Ghumarwin Hot Spots-</b> Kalari Near College, Bhaged, Patta, Dadhol Near Bridge, Harlog Near Bus Stand</p> <p><b>Sub Division Jhandutta Hot Spots-</b> Rohen, Juripatan Road, Kalol, Near Mandva Bridge, Sunani Bridge, Chota Chowk Berthin, Balu Near SukharKhad,</p>
<b>Landslide</b>	Loss of life, damage of houses, roads, means of communication, agricultural land,	Village Kallar to Gambhar-Pul (Bridge) (NH-21), regions around the Govind Sagar Lake
<b>Drought</b>	Human Life, crop life, Cattle life	Whole Area of the District

<b>Flood</b>	Human life, cattle life, crop, property and public infrastructure.	<b>Sub-division Sadar- Villages:</b> Nog, Kandela, Banaula, Ghagus, Padhanu, Kotlu Pada, Norwan, Sikroha, <b>Sub-division Shri Naina Devi Ji- Villages:</b> Dabat Majari, Jandori <b>Sub- division Ghumarwin- Villages:</b> Bum, Nalti, Pernal, Bhunda, Pater, Lanjhant <b>Sub-division Jhandutta - Villages:</b> Kasohal Sunhani, Tungdi, Rid Rado
<b>Boat Accident</b>	Old age Person, Women & Children	Jeoripatan Ghat,
<b>Stampede</b>	Old age Person, Women & Children	Shri Naina Devi Ji Temple, Luhnu Cricket Ground, Dholra Temple, Nalwari Fair, Ghumarwin Fair & social gathering



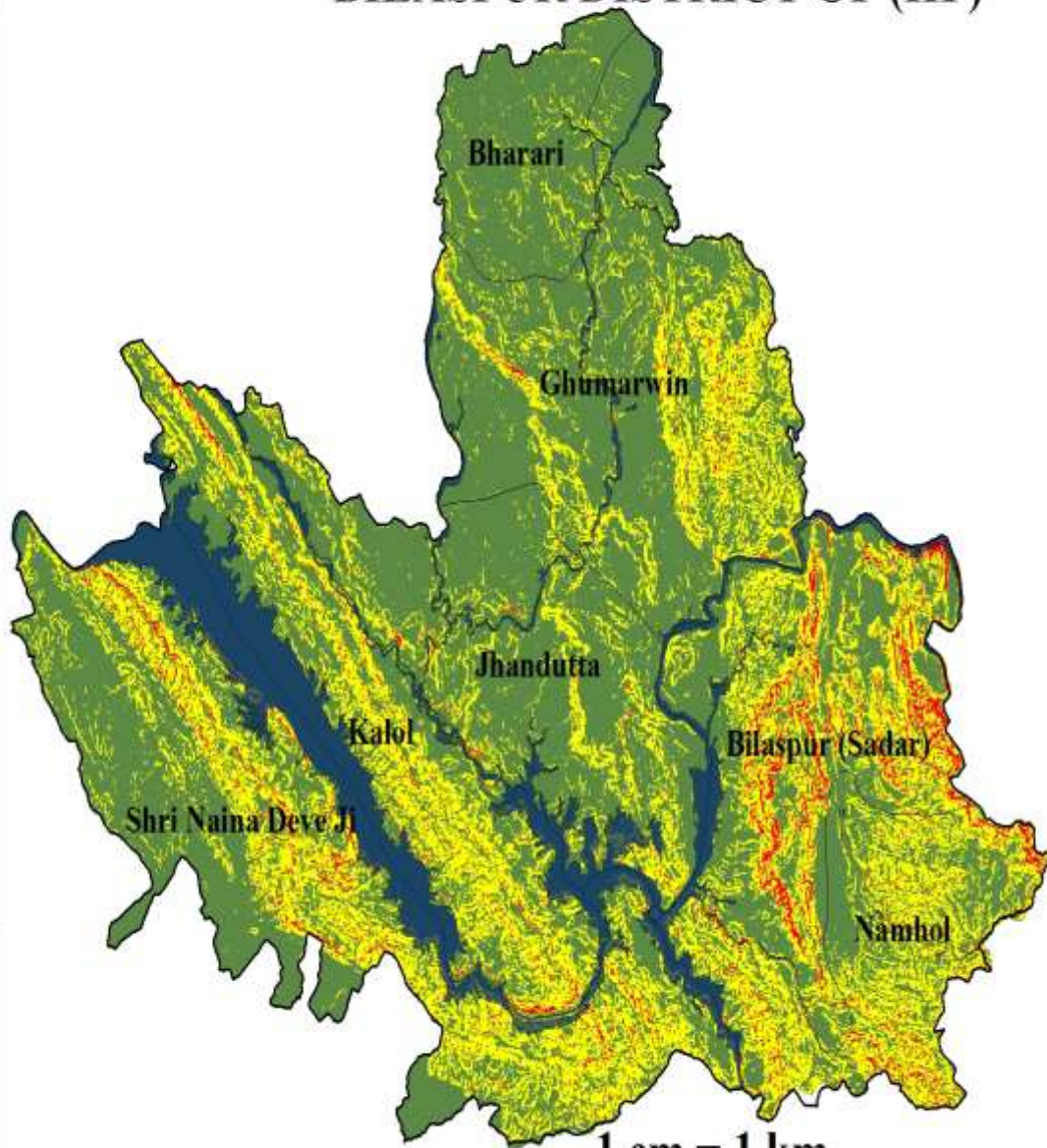
76°30'0"E

76°49'0"E

# TEHSIL/SUB TEHSIL WISE LANDSLIDE RISK MAP OF BILASPUR DISTRICT OF (HP)

31°36'0"N

31°36'0"N



## Legend

- Water Body
- District
- Tehsil

## Frequency

- Low
- Medium
- High

31°17'0"N

31°17'0"N

1 cm = 1 km

76°30'0"E

76°49'0"E

76°30'0"E

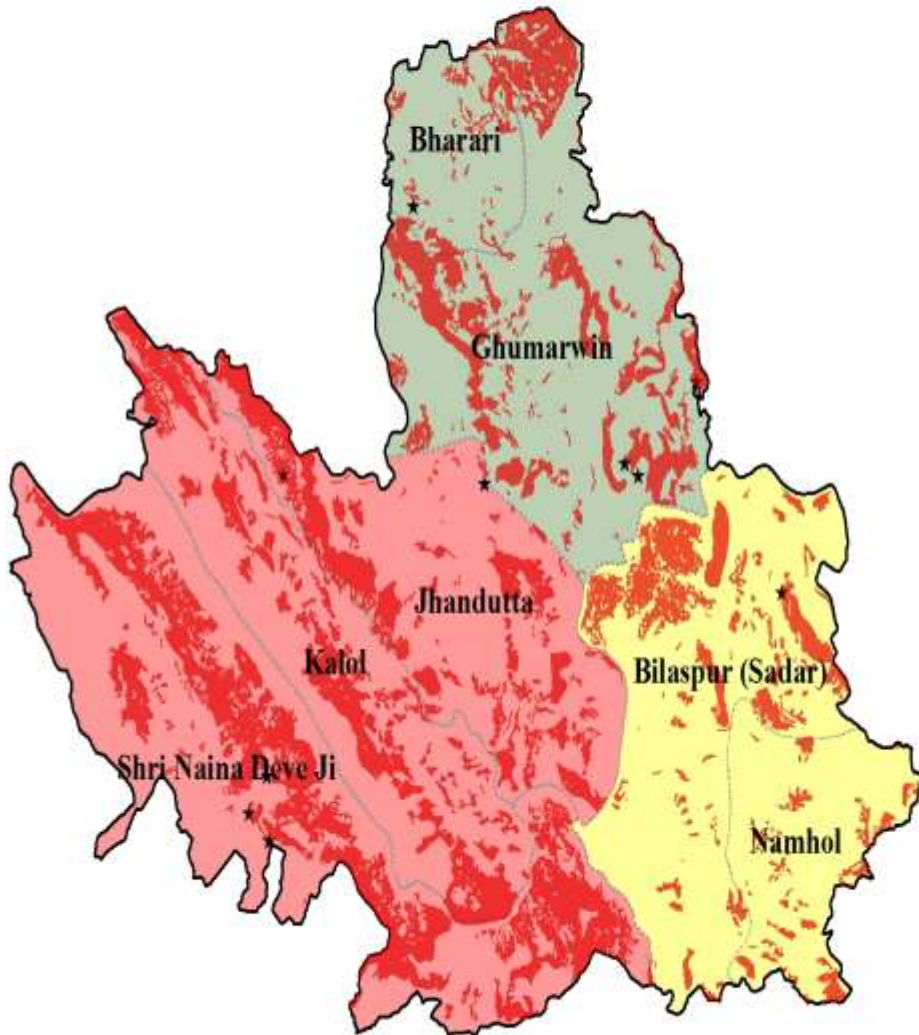
76°49'0"E

# TEHSIL/SUB TEHSIL WISE FOREST FIRE RISK MAP OF BILASPUR DISTRICT OF HP



31°36'0"N

31°17'0"N



## Legend

- District
- Tehsil/Sub Tehsil
- Fire Incident
- Forest Area

## Probability of Forest Fire

- High
- Medium
- Low

1 cm = 1 km

76°30'0"E

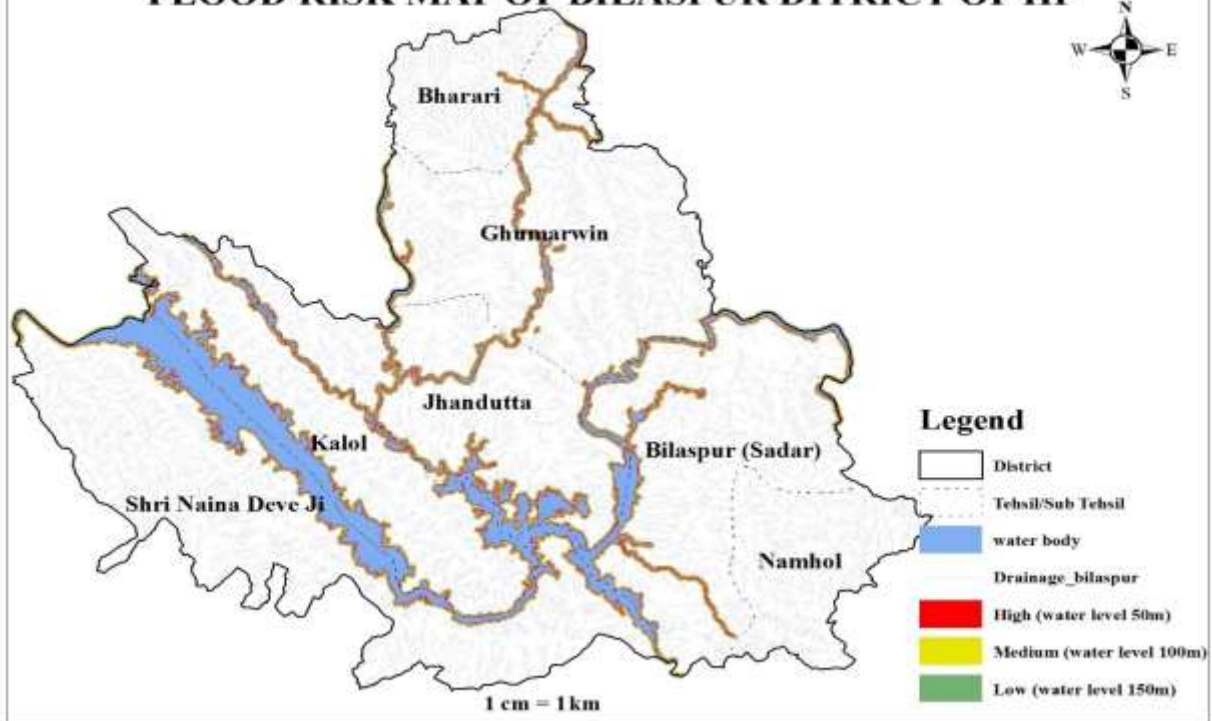
76°49'0"E

31°36'0"N

31°17'0"N



### TEHSIL/SUB TEHSIL WISE DRAINAGE NETWORK & FLASH-FLOOD RISK MAP OF BILASPUR DISTRICT OF HP



76°30'0"E 76°49'0"E

### TEHSIL/SUB TEHSIL WISE LAND USE MAP OF BILASPUR DISTRICT OF HP

