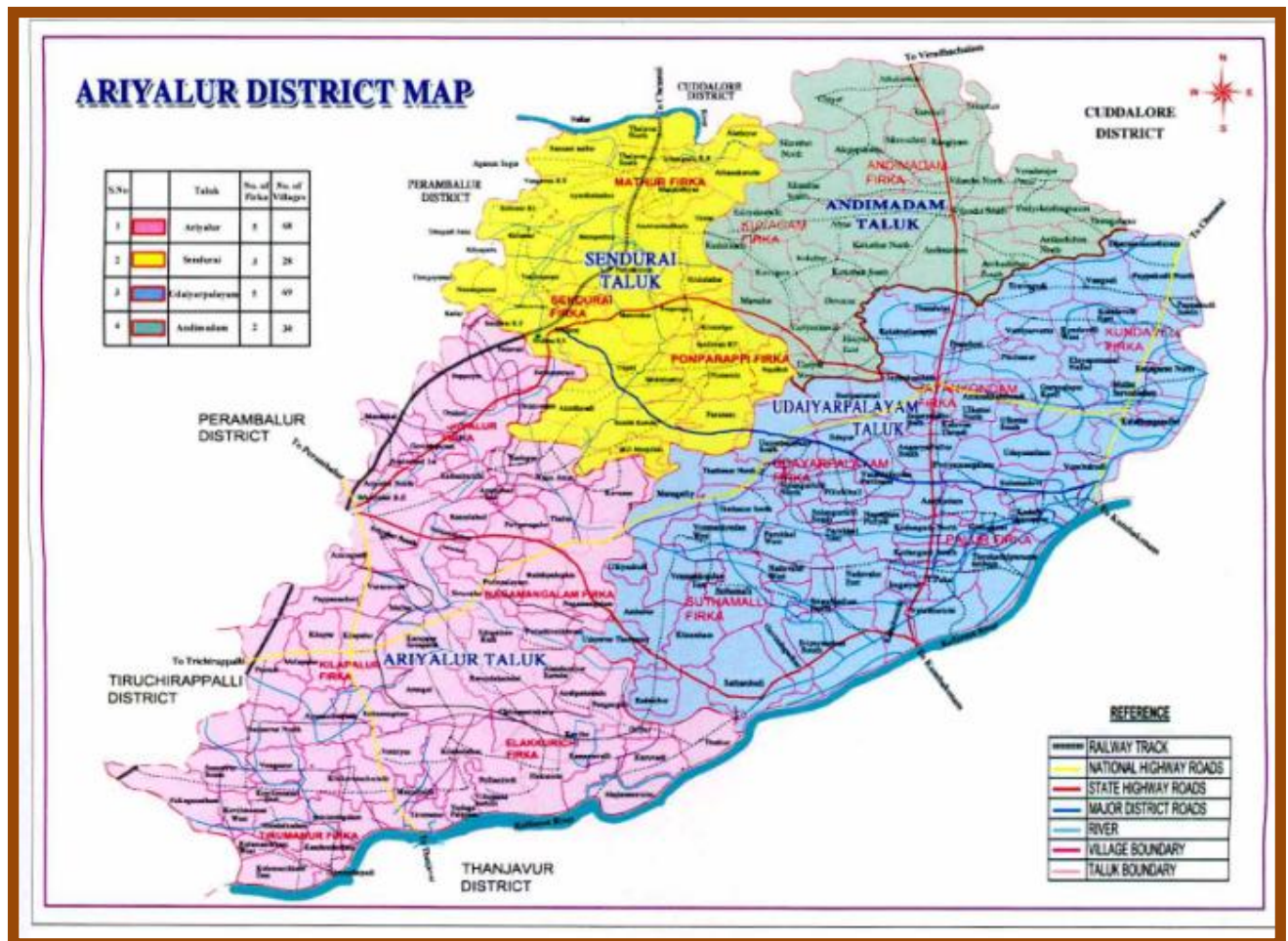


# DISTRICT SURVEY REPORT

## ARIYALUR DISTRICT



DISTRICT ENVIRONMENT IMPACT  
ASSESSMENT AUTHORITY (DEIAA),  
ARIYALUR

# AUGUST 2017

## DISTRICT SURVEY REPORT ARIYALUR DISTRICT

### CONTENT

Chapter		Page No.
1.	Introduction	01
2.	Administrative details	02
3.	Overview of Mining Activity	02
	<b>General Profile of the District</b>	03
4.	Location and Accessibility	03
5.	Rainfall and Climate	03
6.	Geomorphology	05
7.	Landuse Utilisation Pattern in the District	06
8.	Process of Deposition of Sediments in the River of the District	07
9.	Geology of Ariyalur District	08
	i) Evolution of Cauvery Basin	10
	ii) Lithostratigraphic Classification	11
10.	The List of Mining Lease details	13-46
11.	11. Details of Royalty / Revenue received in the last three years (2014-15 to 2016-17)	47-49
12.	Details of production of Sand / Bajari / Minor Minerals in the last three years (2014-15 to 2016-17)	50
13.	Conclusion	50

### LIST OF PLATES

#### Plate No.

1. Field photographs of Ariyalur District Mines.

## 1. Introduction

In pursuance to the Gazette Notification, Ministry of Environment, Forest and Climate Change, the **Government of India Notification No.SO 141 (E) dated 15.01.2016 and SO 190 (E) dated 20.01.2016** the **District Level Environment Impact Assessment Authority (DEIAA) and District Environment Appraisal Committee (DEAC)** were constituted in Ariyalur District for the grant of **Environmental Clearance** for category “B2” projects for quarrying of Minor Minerals. The main purpose of preparation of District Survey Report is to identify the mineral resources and developing the mining activities along with other relevant data of the District. The DEAC will scrutinize and screen scope of the category “B2” projects and the DEIAA will grant Environmental Clearance based on the recommendations of the DEAC for the Minor Minerals on the basis of District Survey Report. This District Survey Report is prepared with the assistance of Geological Survey of India, State Unit, Tamil Nadu and Puducherry, Chennai.

Ariyalur District came into existence by the bifurcation of Perambalur District as per G.O.(Ms)No.683 Revenue(RA1(1)) Department dated 19.11.2007. It is bounded on the North by Cuddalore, South by Thanjavur, East by Cuddalore and Thanjavur and West by Perambalur and Tiruchirapalli districts. Ariyalur has been functioning as a separate District since 23.11.2007.

In pursuance of the commissioner of geology and mining, Chennai, Vide letter no: 1305/SU: TNP/TC/GGM/2017, dated: 05-05-2017, The District Environment Impact Assessment Agency (DEIAA) assignment has been taken up for Ariyalur district of Tamil Nadu on deputation basis in association with Directorate Geology of Mines (DGM), Tamil Nadu. The assignment was carried out for entire Ariyalur district from 22-05-2017 to 31-05-2017 (09 working days) to inspect different kinds of minerals (minor). During the DEIAA assignment, 73 nos of limestone quarry, 8 nos of fire clay and 10nos of gravel quarry has been inspected in Ariyalur district.

## **2. Administrative details**

Ariyalur District came into existence by the bifurcation of Perambalur District as per G.O.(Ms)No.683. Revenue(RA1(1)) Department dated 19.11.2007. It is bounded on the North by Cuddalore, South by Thanjavur, East by Cuddalore and Thanjavur and West by Perambalur and Tiruchirapalli districts. Ariyalur has been functioning as a separate District since 23.11.2007. Ariyalur District consists of two Revenue Divisions viz., Ariyalur and Udayarpalayam, Four Taluks viz., Ariyalur, Sendurai, Udayarpalayam and Andimadam (Andimadam Taluk is formed as per G.O.(Ms) No. 167. Revenue (RA1(1)) Department dated : 08-05-2017) comprising of 195 Revenue Villages. The District has six blocks viz. Ariyalur, Thirumanur, Sendurai, Jayankondam, Andimadam and T.Palur comprising of 201 Village Panchayats. There are two Municipalities viz. Ariyalur & Jayankondam and two Town Panchayats viz. Udayarpalayam & Varadharajanpettai. The District has an area of 1949 Sq.Km.

## **3. Overview of Mining Activity**

Minerals of Economic importance found in Ariyalur District are mainly Celeste, Lime Stone, Shale, Sand Stone, Canker and Phosphate nodules occur at various places in the district. Limestone of sedimentary origin has been found in Ariyalur and Sendurai Taluks. The Limestone is cement grade to plus cement grade in quality and is used in the cement plants. Fire Clay is used for the manufacture of floor tiles, stoneware pipes, fire bricks and in the chemical industry. Jayamkondam in Udayarpalayam Taluk is rich in Lignite, Oil and Gas reserves. Apart from the above major minerals the common use minor minerals viz Red Gravel, Brick Clay, filling earth and Kankar are also found in this District.

The office of the Deputy Director, Department of Geology and Mining is functioning under the control of District Collector, Ariyalur. The Deputy Director, Geology and Mining is assisting the District Collector in the Mineral Administration works.

## General Profile of the District

### 4. Location and Accessibility

Ariyalur District is located in central Tamil Nadu and is 265 k.m. away from Chennai. The District has an area of 1949 Sq.Km. Ariyalur railway station connected by southern railway which connects Chennai, Madurai, Tuticorin and Thirunelveli. Ariyalur is also well connected by roadways which also an important road junction on the Ariyalur-Chennai, Ariyalur-Thanjavur, and Ariyalur-Trichy roadways. SH143 Ariyalur-Thungapuram-Thittakudi, SH27 Ariyalur-Thanjavur and SH139 Ariyalur - Jayamkondam are the major roads via Ariyalur.

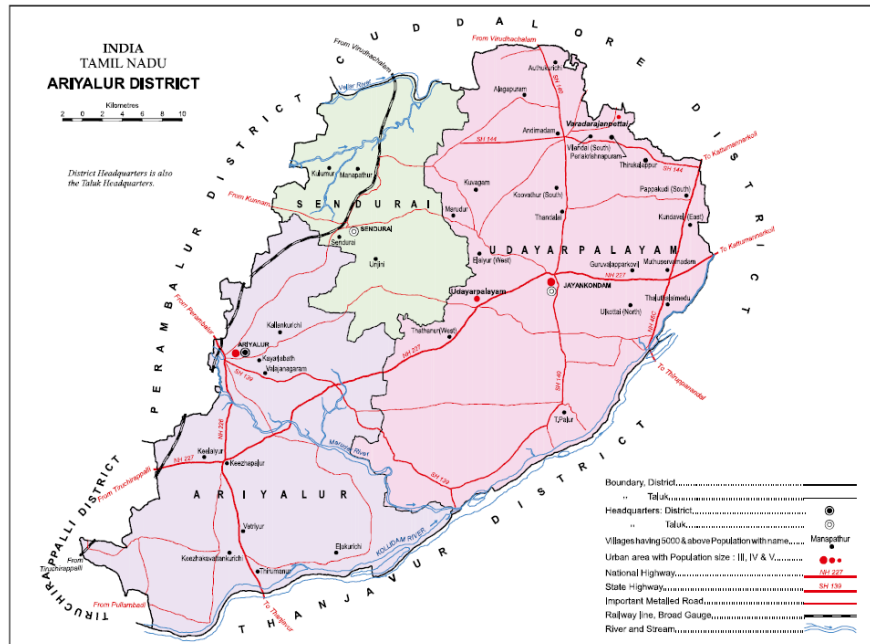


Fig.1 Location Map of Ariyalur District

### 5. Rainfall and Climate

The district receives the rainfall under the influence of both southwest and northeast monsoon. There is a gradual decrease in precipitation from northeast to southwest over the district. The normal rainfall for the period (1901-70) ranges from 843.5 to 1123.3 mm. It is lowest in the Vembavur area and highest in the Jayankondam areas. Ariyalur district enjoys a typical semi arid climate with hot summers and moderately cool winters. The hottest season is from March to May. During the period the maximum temperature often exceeds 40°C. The winter season

is spread over two months viz. January and February and the nights are cool and pleasant. The district generally has a high humidity. The district experiences strong winds during the southwest monsoon season. The wind speed during June to August is more than 25 km/hr. Thereafter there is a gradual decrease in speed reaching the lowest value 7.7 km/hr.

YEAR	JAN		FEB		MAR		APR		MAY		JUN	
	R/F	%DEP	R/F	%DEP	R/F	%DEP	R/F	%DEP	R/F	%DEP	R/F	%DEP
2012	10.5	-50	0	-100	8.5	-35	0.8	-96	34	-50	5.5	-89
2013	0	-100	7.3	-35	6.5	-50	12	-47	12	-83	3.7	-93
2014	0	-100	1	-91	0	-100	0	-100	129	92	9	-83
2016	0	-100	0	-100	0	-100	0	-100	89	34	28	-45

YEAR	JUL		AUG		SEPT		OCT		NOV		DEC	
	R/F	%DEP	R/F	%DEP	R/F	%DEP	R/F	%DEP	R/F	%DEP	R/F	%DEP
2012	30.8	-58	140	8	126	-9	237	22	66	-68	11	-92
2013	7.7	-89	169	31	165	19	74	-62	159	-22	53	-64
2014	80.5	11	93	-28	26	-81	183	-6	90	-56	88	-40
2016	91.2	25	142	10	58	-59	62	-68	30	-85	36	-75

Note : (1) The District Rainfall in millimeters (R/F) shown above are the arithmetic averages of Rainfall of Stations under the District. (2) % Dep. are the Departures of rainfall from the long period averages of rainfall for the District.

Table 1.1 Monthly rainfall data Ariyalur District for the period 2012-16

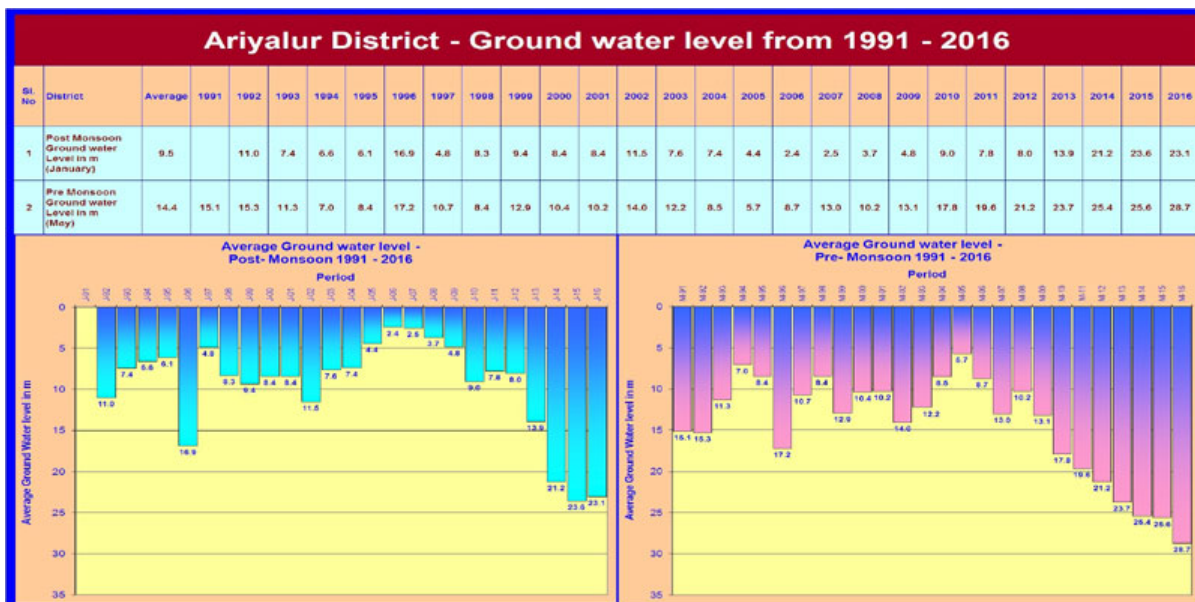


Table 1.2 Average yearly ground water level data of Ariyalur District for the period 1991-2016

## 6. Geomorphology

In general, the district has an undulating topography, characterized by low mounds and broad valleys. Hill ranges belonging to Pachaimalai Hills occupy the northwestern part of the district, where the terrain is rugged. The ground elevation ranges from 100 to 1015 m amsl. The region slop is towards east. Denudational, structural and fluvial processes (Fig.2.) mainly control the geomorphic evolution of the area. Mainly the varying resistance of geological formations to those processes has governed the evolution of various landforms. Various land forms occurring in the area such as structural hills, erosional plains, residual hills rolling uplands and pediments of different facies belonging to the denudational and structural land forms. Fluvial landforms caused by the activity of Cauvery, Marudayar and Vellar river systems, include younger flood plains, older flood plains and buried pediments.

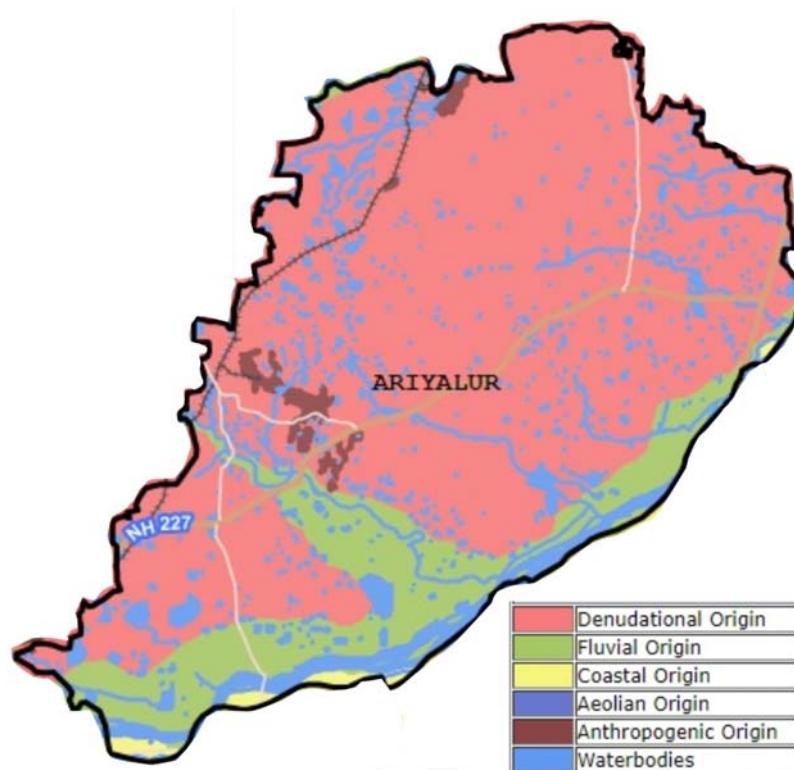


Fig.2 Geomorphology Map of Ariyalur District (downloaded from NRSC Bhuvan website)

## 7. Landuse Utilisation Pattern in the District

Agriculture continues to be the most predominant sector of this district economy, as 70 percent of the population is engaged in Agriculture and allied activities for their livelihood. The district has as an area of 1933.38 sq.km with a gross cropped area of around 1.118 lakhs Ha. The Ariyalur District has a Geographical area of 1,93,338 Hectares. Of which the net area cropped is 1,11,874 Hectares(64.70%). Out of which about 45136 Ha are irrigated and about 66,738 Ha are rainfed. A total of 32,933 hectares (8.92%) are kept as fallow lands. The lands-put to non-agricultural purposes occupy 43,953 (11.91 %) hectares. The cultivable wastelands of 7,742 (2.10%) hectares can be brought in to agricultural uses by suitable measures. The River Cauvery tributary irrigates about 10,389 Ha. in Thirumanur, T.Palur and Jayankondam Block.

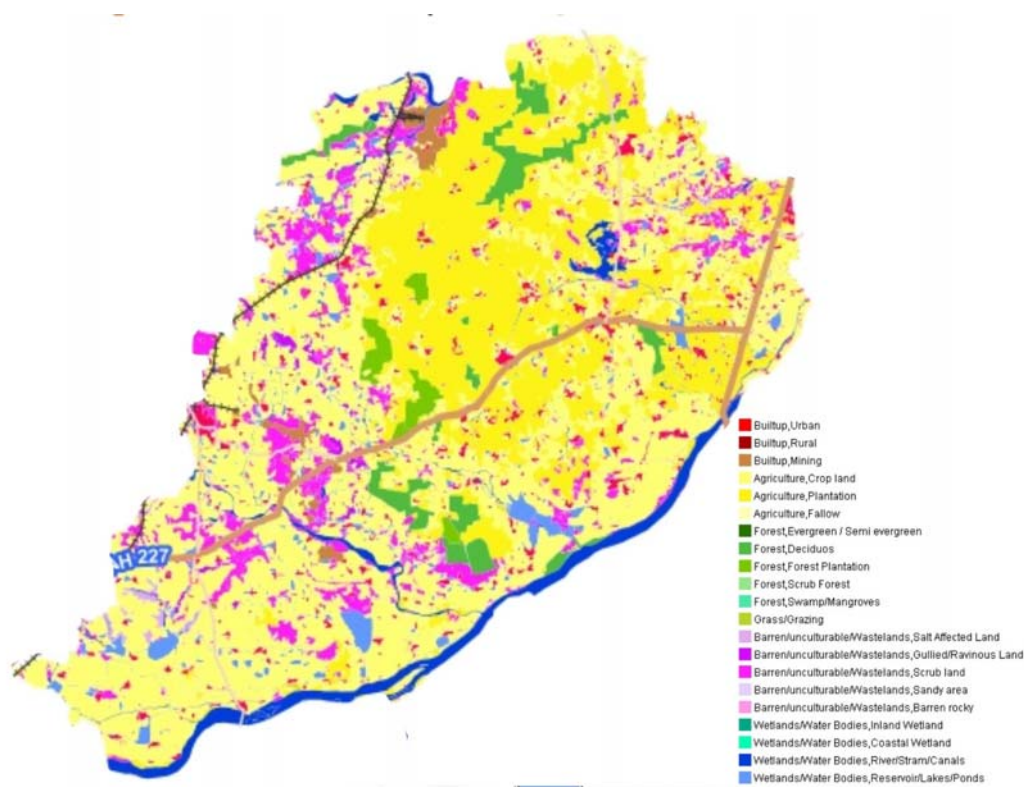


Fig.3 Landuse and Landcover Map of Ariyalur District (downloaded from NRSC Bhuvan website)



## 8. Process of Deposition of Sediments in the River of the District

Cauvery Basin is located in the southeastern part of India and is a structurally elongated marginal basin located between 08°30' and 12°30' N and 78°30' and 80°30' E. It has an area extent of 25,000 sq.km. Onshore and equivalent area in the offshore waters of Bay of Bengal (up to 200m isobaths). It is bordered towards west by steep, down to basin faults, which delineates the outcrops of igneous and metamorphic rocks of Peninsular India shield. Towards the east, the basin extends into the offshore area. The Precambrian igneous and metamorphic rocks forming the Ceylon massif mark the southern boundary. The basin forms a half-graben morphology trending NE-SW. It has a regional dip of 5°-10° towards east and southeast due to the continental rifting of India, Antarctica and Australia in the Late Jurassic and/or even Permian. It is essentially a part of a group of Mesozoic extensional basins formed all along the eastern continental margin of peninsular India, and herefore it has been classified as pericratonic basin (Sastri et al 1981, Biswas et al 1993). The sedimentary successions onshore exceed 5500m in thickness with stratigraphic record from Barremian (135 Ma) to Recent.

The occasional occurrence of trough cross bedded sandstone sequence is channel deposits whose current strength was variable and inconsistent. The bivariate textural plots also supplemented the data on fluvial signatures. The intense weathering of the Pre-cambrian gneissic and granitic rocks in the source area lying towards west released copious supply of fine kaolinitic clays to be deposited in the swamp basins. The occurrence of illitic clays could be attributed to diagenetic alteration of kaolinitic clays in alkaline milieu. Latter at the end of the Maastrichtian the basin experienced a semiarid climate with the development of calcrete layers at the top of the sequence. Perhaps a good amount of reworked sediments from older Cretaceous units was possible with the occurrence of enormous number of casts of invertebrates. Kallamedu Formation in the Ariyalur area is a distinct lithological unit which is underlain and overlain by true marine formations with enriched marine faunal materials such as Ottakoil and Niniyur (Paleocene) units. The Kallamedu

sediments have suffered moderate burial diagenesis as evident from grains packing in thin sections. Few grain fracturing features are also observed.

## **9. Geology of Ariyalur District**

The Cretaceous Formation of the Ariyalur area (Ariyalur District, Tamil Nadu) is one of the best developed sedimentary sequences in South India. The Cretaceous system of Cauvery Basin consists of shallow marine sequence with a rich faunal succession of Albian-Maastrichtian.

Blanford (1862) was the first to work on the stratigraphy of this formation and he divided the litho-units into three groups: Uttatur, Trichinopoly and Ariyalur. These three groups are largely disconformable and occasionally unconformable at places. The geology and the stratigraphy of this area are accounted by many workers (Rama Rao, 1956; Ramanathan, 1968; Banerji, 1972, Sastri et al, 1972; ONGC, 1977; Sundaram and Rao, 1979 & 1986; Ramasamy and Banerji, 1991; Banerji et al, 1996; Gonvindan et al, 1996). Ramasamy and Banerji (1991) have revised the stratigraphic framework of the exposed Pre-Ariyalur sequence based on detailed lithological and petrographical variations. Banerji et al., (1996) have redefined the Uttatur Group and identified within it four distinct formations comprising reefoidal bodies, sandy clay, coarse sand bar and gypsiferous siltyclay units. Madavaraju (1996) has presented a detailed geochemical and petrographical account of Ariyalur Group of sediments and Kallamedu Formation is the youngest unit of this group. Further REE distribution and its importance in establishing anoxic/oxic conditions in lime rich Kallankurichi Formation was attempted by Madavaraju and Ramasamy (1999).

The sedimentary rocks of Cretaceous - Palaeocene age are well developed in the Ariyalur area, which consist both clastic and carbonate facies. The diversity of fauna is very large in the vast sedimentary basin that has attracted the attention of geologists not only from India but also from foreign countries. Sastry et al., (1972) have further divided the Ariyalur Group into four formations mainly based on lithological changes and characteristic faunal content: i) Sillakudi ii) Kallankurichi iii) Ottakoil and iv) Kallamedu Formations. This classification has been followed by

various workers of varied interests. Kallamedu Formation (Late Maastrichtian) is the youngest formation of the Ariyalur Group and it exhibits large variation in lithology. The exposed area looks like a badland topography with sparse vegetation. Excavation at favourable spots in Kallamedu Formation has yielded a number of well-preserved skeletal parts of Carnosaurs (Yadagiri and Ayyasami, 1987). The lithological association of this formation includes sandstone, siltstone, calcareous sandstone, silty shale and thin band of limestone. The sandstone and siltstone are well exposed in the nala sections near north of Kallamedu village (Fig. 1). Govindan et al. (1996) have assigned Maastrichtian age for the continental deposits of the Kallamedu Formation. Kallamedu Formation is overlain by the Niniyur Formation of Early Paleocene age.

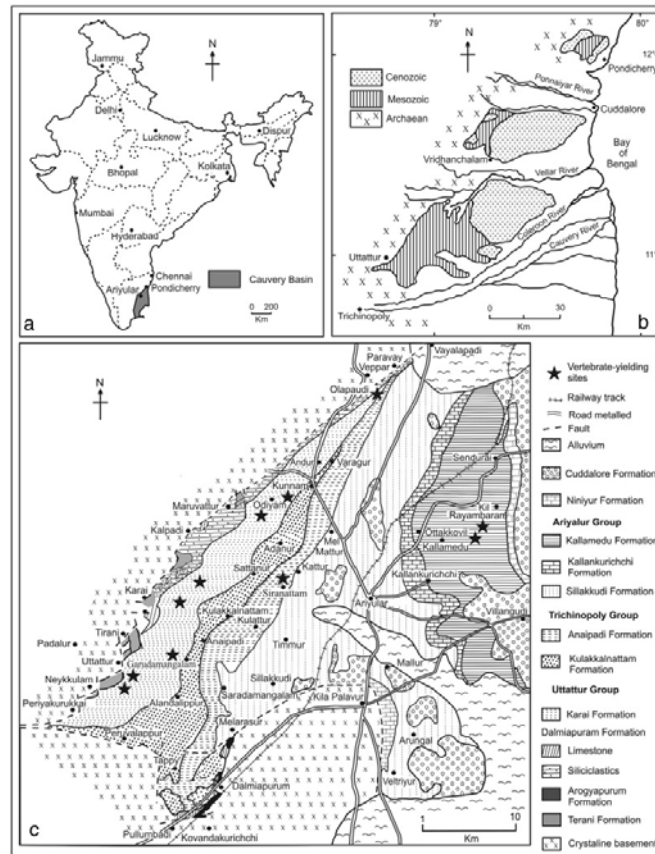


Fig.4 Geological map of Ariyalur District and Cauvery basin (Sundaram et. al 2001)

The late Cretaceous sediments are exposed in the western part of the study area and classified into Uttatur, Trichinopoly and Ariyalur formations with a maximum thickness of 900 m, 600 m and 1500 m, respectively. The Uttatur formation consists of reefoidal limestone and minor sandstone, with rich faunal assemblages. Conglomerates and quartzites are also found to occur in the Uttatur group of rocks. These rocks are exposed only in Trichirapalli area where they are overlying Gondwana and Dalmiapuram formations. The sub-surface equivalent of the Uttathur formation, is devoid of reefoidal elements. The Trichinopoly formation, unconformably overlying the Uttatur formation, comprises conglomerate, pebbly sandstone as well as gritty calcareous sandstone with bands of claystone, gypseous claystone, sandy limestone, shelly limestone and clayey limestone with abundant fauna. They are exposed in Ariyalur, Vridhachalam and Pondicherry areas. The rocks are mainly greenish grey, friable clayey sandstone, fossiliferous argillaceous limestone and sandstone. The lower part of Ariyalur formation is highly fossiliferous while the upper is largely unfossiliferous.

### **i) Evolution of Cauvery Basin**

The Cretaceous–Paleogene sections of Cauvery Basin are closely related to the rifting and drifting phases of peninsular India. The basement is characterized by structural highs and lows, these being evidenced by strong tectonic activity affecting the basin since its inception. Two major tectonic and sedimentary phases are deciphered. The first is taphrogenic rifting and associated block movements along the dominant NE-SW trend during Late Jurassic, resulting in morphotectonic humps and deep slopes. The second phase signifies coastal progradational/deltaic sedimentation through a series of marine transgression and regression in response to the oscillatory tectonic movements. During Paleocene, the basin continued to tilt towards east and depocentres consequently shifted.

Cauvery Basin comprises of depressions separated from one another by subsurface ridges; these structural elements extend into the offshore area. The structural elements from north-south are, (1) AriyalurPondicherry depression, (2)Kumbakonam–Madnam-Shiyali ridge (3) TanjoreTranquibar–Nagapattinam

depression (4) Pattukottai- Mannargudi ridge (5) Ramnad-Palk Bay depression (6) Mandapam-Delft ridge. The first marine transgression occurred during the close of Late Jurassic. The marine environments of sedimentation continued till Cretaceous although a series of minor transgressions and regressions. A major regression occurred during the close of Cretaceous. The basin underwent an easterly tilt and the depocentres shifted due east prior to marine transgression during the beginning of Paleogene.

The evolution of Cauvery Basin is largely controlled by dominant trends in the Precambrian crystalline basement as is evident from the similarity between the alignment of the basinal structural elements and the major trends in the adjoining peninsular shield. The NE-SW Eastern Ghats trends are by far the most dominant and taphrogenic movements along these basement trends resulted in a series of elongated depressions that were separated from one another by intra-depression ridges.

## **ii)Lithostratigraphic Classification**

Blanford (1862) has classified the Cretaceous sediments of Cauvery Basin into: Uttatur plant beds, Uttatur and Trichinopoly Groups. Krishnan (1943) classified the Cretaceous sections into four stages: Uttatur (Cenomanian to Uppermost Albian), Trichinopoly (Mid-Cenomanian to Mid-Turonian), Ariyalur (Maastrichtian to Mid-Cenomanian) and Niniyur (Danian to Maastrichtian). Ramanathan (1968) has divided the Upper Jurassic to Cretaceous sections of Cauvery Basin into three formations: Upper Gondwana (Bathonian to Neocomian), Uttatur (Barremian to Albian) and Trichinopoly (Turonian to Upper Cenomanian). Nair (1974) introduced two groups for the Cretaceous sections: Ariyalur for Maastrichtian age and Uttatur for the rest part of the Cretaceous age. Sundaram and Rao (1976) proposed three groups for Cretaceous of Cauvery Basin: Uttatur, Trichinopoly and Ariyalur. Govindan (1998) compiled the outcrop and subcrop sediments and proposed the sediments classification (Table 1.3).

AGE	Ma	GROUP	FORMATION	
			OUTCROP	SUBSURFACE
DANIAN			NINIYUR	
MAASTRICHTIAN	65	ARIYALUR	KALLAMEDU Sandstone	PORTONOVO Shale
			OTTAKOVIL Sandstone	
			KALLANKURICHCHI Limestone	NANNILAM
CAMPANIAN	70	SILLAKKUDI Sandstone	KOMARAKSHI	
SANTONIAN	83	GARUDAMANGALAM (Anaipadi) Calcarenite		KUDAVASAL
CONIACIAN	85	TRICHINOPLY		
	89			

Table 1.3 Lithostratigraphic Classification of Late Cretaceous sediments. Cauvery Basin (Govindan 1998)

## 10. The List of Mining Lease details

The commodity/item wise details of Mining Leases in Ariyalur District, there are 73 limestone mines including working and non working mines (26 nos approx) in the district, 8 fire clay mines includes both working and non working, 10 gravel quarries and 9 sand mining along the Cauvery river basin. The mining leases for all minerals in the district with location, area and period of validity are attached below.

### Name of the Mineral:Limestone

Sl. No	Name and address of the lessee	Location of lease		Lease Area (Hects)	Area under		Date of Grant of lease (original and sub -sequent renewals)	Date of execution (original and sub-sequent renewals)	Period (Years)
		S.F. No.	Village, Taluk, District)		For est Area (Hect.)	Non-Forest Area (Hect.,)			
1	2	3	4	5	6	7	8	9	10
1	Tvl. Tamil Nadu Cements corporation Ltd., 735 Anna Salai, Chennai.	S.F.No.6/1, 2 etc 79/1B, 79/2 etc 34/1,2 etc Patta, 7/2, 8/3 etc 79/1A, 80/1A etc Poramboke	Ariyalur Taluk Kallankurichi Village,  Aminabad Village  Kairlabad Village,  Ariyalur District	218.73.5  (Patta) 21.78.0  (Poram boke)  Total Extent 240.51.5	-	240.51.5	G.O. Ms. No.344,  dated 10.03.198 0	27.04.81	20 Years  27.04.81  To 26.04.01

2	Tvl. Tamil Nadu Cements corporation Ltd., 735 Anna Salai, Chennai.	S.F. No. 38/25289/ 2 130/2 etc 327/2,329/ 2 etc285, 286 etc Patta 38/24,etc3 27/329/2 etc 331/1 etc 175, 176	Ariyalur Taluk, Periyagalur Aminabad Kairlabad  Kallankurichi Villages, Ariyalur District.	150.01.0  Patta 44.28.5  Porambok e Total Extent 194.30.0	-	194.30.0	G.O. Ms. No.456,  dated 16.05.198 5	13.11.85	20 years  13.11.85 to 12.11.05
3	Tvl. Tamil Nadu Cements corporation Ltd., 735 Anna Salai, Chennai.	Patta. S.F. Nos. 176 etc91, 92/4,5,  164/16etc 28/1, 29/1etc Poramboke  S.F.No.180  92/1,6, 113/3  162/5B etc  28/7,30/15 , 282	Ariyalur Taluk,  Aminabad  Kallankurichi  Kairlabad Villages	Patta  62.77.0 Porambok e 3.34.0  Total Extent  66.11.0	-	66.11.0	G.O. Ms. No.469  dated 21.05.198 5	13.11.85	20 Years  13.11.85 To 12.11.05



4	Tvl. Tamil Nadu Cements corporation Ltd., 735 Anna Salai, Chennai.	S.F. No. 316/1 etc , Poramboke S.F.No.343 /22, 733 etc.,	Sendurai Taluk, Anandavadi, Ariyalur District.	Patta 92.64.5 Porambok e 18.22.0 Total Extent 110.86.5	-	110.86.5	G.O. Ms. No.624/ Dated 23.09.1998	16.3.2000	30 years 6.3.2000 to 15.03.30
5	Tvl Tamil Nadu Minerals Limited, Chepauk, Chennai.	S.F. Nos. 304/2A, 2B etc	Ariyalur Taluk, Periyanaalur, Ariyalur District.	Patta 2.80.0	-	2.80.0	G.O. No.106, Dated 22.07.1996	31.03.98	20 years 31.03.98 to 30.3.2018
6	Tvl. Tamil Nadu Minerals Limited, Chepauk, Chennai.	Patta S.F. No. 304, 301/1, 4, 5, 6, S.F. No. 292/4 etc	Ariyalur Taluk, Periyanaalur, Ariyalur District.	Patta 1.26.0 Porambok e 8.68.5 Total Extent 9.94.5	-	9.94.5	G.O. No.1659 Industries dated 05.12.1981	30.06.86	20 years 30.06.86 to 29.06.06

7	Tvl.Dalmia Cement (Bharat) Ltd, Dalmiapuram	Patta S.F. No. 213,214 etc Poramboke 1/2etc	Ariyalur Taluk, Periyathirukonam village,  Ariyalur District	Patta 60.60.5 Poramboke  0.76.0 Total Extent 61.36.5	-	61.36.5	G.O. No. 534,  Dated 05.01.1993	220.03.01	25 Years 28.3.2001 to 29.3.2031
8	Tvl.Dalmia Cement (Bharat) Ltd, Dalmiapuram	Poramboke S.F.No.103 /3,104/3, 448, 449 etc	Ariyalur Taluk, Aminabad, Kairlabad Villages,  Ariyalur District.	Poramboke  65.17.0 Hects  30.17.5 Hects  Total Extent 95.34.5	-	95.34.5	G.O. 2, dated: 5.01.1993 & G.O.No.3 D No 58  Dated 16.10.2006	05.01.93	30 years  03.10.70  to  2.10.2000 renewed for a further period of 20 years
9	Tvl.Dalmia Cement (Bharat) Limited, Dalmiapuram	Patta S.F. No. 455/1, 2, 3	Ariyalur Taluk & District,  Kairulabad Village	Patta 2.25.0	-	2.25.0	Progs.R.C .17783/ MM4/200 2 Dated 27.01.2004	21.07.04	30 years  13.08.04 to  12.08.34

10	Tvl.Dalmia Cement (Bharat) Ltd., Dalmiapuram	S.F. Nos. 40/5 etc	Ariyalur Taluk, Periyagalur Village, Ariyalur District.	Poramboke 70.01.0	-	70.01.0	G.O MS No. 179 dated 29.9.2008	18.2.2009	20 years 08.9.2005 to 7.09.2025
11	Tvl.Dalmia Cement (Bharat) limited, Dalmiapuram Po, Lalkudi Taluk,	S.F. Nos. 210/8A, 8B, etc	Periathirukonam & Alanthuraiyarkattalai Village, Ariyalur Taluk and District	Patta 44.70.5	-	44.70.5	CGM proc. No. 14812/MM4/2003 dt 25.05.2005	24.1.2011	30 years 27.1.2011 to 26.1.2036
12	Tvl. Madras Cements Ltd., 98-A Auras Corporate Centre, Radhakrishnan Road, Chennai..	S.F. No. 61/2,81/1A etc,	Alathiyur village Sendurai Taluk. Ariyalur District.	Patta 13.44.0 Poramboke 0.24.0 Total Extent 13.68.0	-	13.68.0	G.O.(4D) No. 1 Dated 3.1.1995	31.3.1995	30 Years 31.3.1995 to 30.3.2025

13	Tvl. Madras Cements Ltd., 98-A Auras Corporate Centre, Radhakrishnan Road, Chennai.	S.F.No. 226/7 etc	Ariyalur Taluk, Pudupalayam village, Ariyalur District.	Patta 10.65.0	-	10.65.0	G.O.(3D) No.5 Dated 04.01.95	16.6.1995	20 years 16.6.1995 to 15.6.2015
14	Tvl. Madras Cements Ltd., 98-A Auras Corporate Centre, Radhakrishnan Road, Chennai.	Patta S.F. No. 317/1,2 etc 468/1 to 11 Poramboke S.F.No. 326/10, 332/2 etc	Ariyalur Taluk, Periyanaalur Valajanagaram villages, Ariyalur District.	Patta 36.07.0 6.68.0 Poramboke 1.65.0 0.18.5 Total Extent 44.58.0	-	44.58.0	G.O. No. 605, Dated 17.09.1998	16.3.2000	30 years 13.7.2000 to 2.07.2030
15	Tvl. Madras Cements Ltd., 98-A Auras Corporate Centre, Radhakrishnan Road, Chennai.	S.F. No. 298 (P) 299 (P), etc	Ariyalur Taluk , Reddipalayam Village, Ariyalur District.	Patta 63.60.0	-	63.60.0	G.O.662 Dated 09.10.98.	23.07.04	30 years 23.07.04 to 22.07.34

16	Tvl. Madras Cements Ltd., 98-A Auras Corporate Centre, Radhakrishnan Road, Chennai.	S.F.No.51, 230, 231, etc	Ariyalur Taluk , PeriyanaGalur Village, Ariyalur District.	Patta 32.95.0 Porambok e 3.34.5 Total Extent 36.29.5	-	36.29.5	G.O. Ms. No.3(D) No.2 (MMA II) 13.01.03	2.06.2003	20 years 20.8.2003 to 19.08.23
17	Tvl. Madras Cements Ltd., 98-A Auras Corporate Centre, Radhakrishnan Road, Chennai.	405 & 406, etc	Ariyalur Taluk, Pudupalayam & PeriyanaGalur Villages, Ariyalur District.	Patta 26.02.0 Porambok e 0.05.5 Total 26.07.5	-	26.07.5	G.O. (4D) No.1, Inds. Dept., dated. 02.01.2007	17.12.08	20 years 24.03.09 to 23.03. 29
18	Tvl. Madras Cements Ltd., 98-A Auras Corporate Centre, Radhakrishnan	S.F.No.77,78 etc Poramboke S.F.No.82/11, 85/3	Sendurai Taluk, Manakkudaiyan Adanakurichi,	Patta 36.84.0 49.29.0 Porambok e	-	89.87.5	G.O.(4D) No. 2 Dated 03.01.95	31.3.1995	30 Years 31.3.1995 to 30.3.2025

	Road, Chennai.	etc	Ariyalur District.	1.17.5 2.57.0 Total Extent 89.87.5					
19	Tvl. Madras Cements Ltd.,  98-A Auras Corporate Centre,  Radhakrishnan Road, Chennai.	S.F.No.83, 84/1 etc  Poramboke  S.F.No. 104/1, 190 etc	SenduraiTaluk, Alathiyur Village,  Ariyalur District.	Patta  53.37.5 Porambok e  3.74.5 Total Extent  57.12.0	-	57.12.0	G.O. No.  667  Dated 13.10.199 8	12.4.1999	30 years 27.12.00 to 26.12.30
20	Tvl. Madras Cements Ltd.,  98-A Auras Corporate Centre,  Radhakrishnan Road, Chennai.	S.F. No. 102 etc,  Porambmok e  S.F.No. 1 1/2 etc	Sendurai Taluk,  Adhanakurichi  Manakkudaiya n Villages,  Ariyalur District.	Patta  23.95.0 Porambok e  3.36.0 Total Extent 27.31.0	-	27.31.0	G.O. No. 988,  Dated 24.12.199 9	21.12.00	30 years 28.3.2003 to 27.3.2033

21	Tvl. Madras Cements Ltd., 98-A Auras Corporate Centre, Radhakrishnan Road, Chennai.	S.F. No. 53/3, 5 54/1A etc,	Sendurai Taluk , Manakudiyen Village, Ariyalur District.	Patta 14.68.5	-	14.68.5	Progs No. 16940/ MM4/ 2000  Dated 31.3.2004	24.8.2004	20 years 19.10.04 to 18.10.24
22	Tvl. Madras Cements Limited Alathiyur Works Cement Nagar Post, sendurai Taluk.	S.F. No. 105, 125, 128, etc	Sendurai Taluk, Tular & Manakudayan Villages,	Patta 132.63.0 Porambok e 3.48.0 Total Extent 136.11.0	-	136.11.0	G.O (4D) No.6/ IND/ Dept, dt. 02.07.200 8	18.09.08	20 years 21.10.08 to 20.10.28
23	Tvl. Madras Cements Limited Alathiyur Works Cement Nagar Post Sendurai Taluk.	S.F. No. 83, 84, etc	Sendurai Taluk, Manakudayan Village,	Patta 43.70.0 Porambok e 1.10.5 Total Extent 44.80.5	-	44.80.5	G.O (3D) No 76 dt. 13.09.200 2	24.11.08.	20 years 30.12.08 to 29.11.28

24	Tvl. India Cements Ltd., Dhun Building 827,AnnaSalai, Chennai.	S.F Nos. 178/3,4 etc	Sendurai Taluk, Periyakkurichi Village,	Patta 56.55.0	-	56.55.0	G.O. No. 203 Dated 08.05.1991	05.3.1992	20 years 05.3.1992 to 04.3.2012
25	Tvl. India Cements Ltd., Dhun Building 827,Anna Salai, Chennai.	S.F Nos. 55/1, 37/1 etc	Sendurai Taluk, Alathiyur, Manakkudiyar Adanakurichi Villages,	Patta 80.26.0	-	80.26.0	G.O.No.70 Dated 17.03.1995	17.6.1995	30 years 17.3.1995 to 29.2.2025
26	Tvl. India Cements Ltd., Dhun Building 827,Anna Salai, Chennai.	S.F. No. 179, 202etc	Sendurai Taluk, Alathiyur Village, ,	Patta 17.58.0	-	17.58.0	G.O. No. 765, Dated 16.11.1998	28.10.99	20 years 28.10.99 to 27.7.2019



27	Tvl. India Cements Ltd., Dhun Building 827,Anna Salai, Chennai.	S.F. No. 265, 270 etc	Ariyalur Taluk, Pudupalayam Village,  Southern Block,	Patta 29.29.5	-	29.29.5	G.O. No. 75/2003  Dated 04.08.2003	09.02.89	20 years 09.02.89 to 08.02.09
28	Tvl. India Cements Ltd.,Dhun Building 827,Anna Salai, Chennai.	S.F.No.166, 167, etc.,	Alathiyur Village, Sendurai Taluk	Patta 157.84.0  Poramboke 2.89.0  Total Extent 160.73.0	-	160.73.0	G.O.(3D) No. 103  Inds. Dept. Dated 17.10.2005	12.04.06	30 years 6.6.2006 to 5.6.2036
29	Tvl. India Cements Ltd., Dhun Building 827, Anna Salai, Chennai.	Patta  S.F. No. 24/4A,24/5 BEetc Poramboke 15, 66 and 87/7, 90/5	Sendurai Taluk , Alathiyur& Athanakurichi Villages, Ariyalur District.	Patta 46.58.0 Poramboke 0.84.0 Total Extent 47.42.0	-	47.42.0	G.O. (3D) No.16, Ind. Dept.  Dt. 3.2.2004	16.10.06	20 years 20.10.06 to 19.10.26

30	Tvl. Ultra Tech Cement Ltd, Reddipalayam Village, Ariyalur Taluk	Patta S.F.No. 264, 268 etc	Ariyalur Taluk, Pudupalayam Village, Ariyalur District.	Patta 50.45.5	-	50.45.5	G.O. No. 485, Dated 31.12.1993	06.01.89	20 years 06.01.87 to 05.01.07
31	Tvl. Chettinad Cements Corp., Ltd., Rani Seethai Hall Buildings, 603, Anna Salai, Chennai.	S.F No. 104	Ariyalur Taluk & District, Aminabad Village	Patta 2.25.5	-	2.25.5	CGM Progs. No. 10994/ MM1/2007, dated: 07.11.08	20.2.2009	20 years 30.3.2009 to 29.3.2029
32	Tvl. Chettinad Cements Corp., Ltd., Rani Seethai Hall, Buildings 603, Anna Salai, Chennai.	Patta S.F. No. 207, 208 etc, Poramboke 213/4, 7A	Ariyalur Taluk & District, Pudupalayam Village (Northern Block)	Patta 36.94.0 Poramboke 0.07.0 Total Extent 37.01.0	-	37.01.0	G.O. No. 27 dated 11.01.1989	9.12.1989	20 years 9.12.1989 to 08.2.2009

33	Tvl. Chettinad Cements Corp., Ltd., Rani Seethai Hall, Buildings, 603 Anna Salai, Chennai	S.F. No. 104/1C, 2A Etc	Ariyalur Taluk, Aminabad Village	Patta 4.94.5	-	4.94.5	Progs. No.9220/MM4/2003, dated 22.09.2003	29.10.03	30 years 25.11.03 to 24.11.33
34	Tvl. Chettinad Cements Corp., Ltd., Rani Seethai Hall, Buildings, 603, Anna Salai, Chennai.	S.F. No. 37, 38 etc Poramboke 39, 40 etc	Unjini Village, Sendurai Taluk, Ariyalur District	Patta 18.82.5 Poramboke 2.14.0 Total Extent 20.96.5	-	20.96.5	G.O (3D) No.35 Inds. Dept Dated 01.03.2004	20.9.2005	20 years 27.2.2006 to 26.2.2026
35	Tvl. Chettinad Cements Corp., Ltd., Rani Seethai Hall Buildings, 603 Anna Salai, Chennai.	S.F. Nos. 1, 2, 4, 5 etc	Ariyalur Taluk, Alanduraiyarkattalai Village, Ariyalur District.	Patta 22.26.0	-	22.26.0	CGM, Proc. No.7479/MM4/03 dt. 09.10.2003	29.11.06	20 years 22.12.06 to 21.12.26

36	Tvl. Chettinad Cements Corp., Ltd., Rani Seethai Hall Buildings, 603 Anna Salai, Chennai.	S.F Nos. 55/1,2 ,56/7 etc.,	Ariyalur Taluk, Pudhuppalayam Village, Ariyalur District.	Patta 4.32.5	-	4.32.5	CGM, Proc. No. 462/MM1 /2009 dt 24.12.2009	11.2.2010	20 years 9.4.2010 to 8.4.2030
37	Tvl. Chettinad Cements Corp., Ltd., Rani Seethai Hall Buildings, 603, Anna Salai, Chennai.	S.F Nos. 48/1A1, 1A2, etc.,	Ariyalur Taluk, Arungal Village, Ariyalur District.	Patta 67.73.0	-	67.73.0	CGM, Proc. No.10047 / MM1 /2008, dt 19.03.2012	18.9.2012	20 years 01.11.2012 to 30.10.2032
38	Tvl. Chettinad Cement Corp., Ltd., Rani Seethai Hall Building, 603, Anna Salai, Chennai.	S.F.Nos.31/ 2A, 2B etc.,	Karuppur Senapathi Village, Ariyalur Taluk and District.	Patta 4.00.0	-	4.00.0	CGM Proc No.7134/ MM7/2010, Dated 05.02.2013	22.04.13	20 years 29.04.2013 to 28.04.2033

39	Tvl. Chettinad Cement Corp., Ltd., Rani Seethai Hall Building, 603, Anna Salai, Chennai -6.	S.F Nos. 245/1, 1B, etc.,	Kallankurichi Village, Ariyalur(Tk) & (Dt)	Patta 4.92.5	-	4.92.5	CGM Proc No.9534/MM7/2010, Dated 05.02.2013	22.04.13	20 years 08.07.2013 to 07.07.2013
40	Tvl. Chettinad Cement Corp., Ltd., Rani Seethai Hall Building, 603, Anna Salai, Chennai -6.	S.F Nos. 328/1, 1B, etc.,	Nakkambadi Vge, Sendurai Taluk, Ariyalur District.	Patta 4.99.5	-	4.99.5	CGM Proc No.9533/MM7/2010, Dated 05.02.2013	22.04.13	20 years 29.04.2013 to 28.04.2033

41	Tvl. Chettinad Cement Corp., Ltd., Rani Seethai Hall Building, 603, Anna Salai, Chennai -6.	S.F Nos. 394/6C, 7A, etc.,	Pudupalayam and Edaiyathankud i Villages, Ariyalur Taluk and District.	Patta 4.95.0	-	4.95.0	CGM Proc No.7133/ 2010, Dated 05.02.201 3	22.04.13	20 years 29.04.2013 to 28.04.2033
42	Tvl. Venkateswara Cements Ltd., 1132, P.H. Road, Chennai.	Patta SF. Nos. 406/1G, 417 etc Poramboke SF.No. 418\2	Ariyalur Taluk, Valajanagaram,	Patta 6.88.5 Hects Porambok e0.21.0 Hects Total 7.09.5	-	7.09.5	G.O. No. 729 Dated 12.10.198 9	25.3.1990	20 years 25.3.1990 to 24.3.2010

43	Thiru. C.R. Shanmugam Plot No. 28 Room No.221, Ganapathy Nagar Thiruvanaikovil, Trichy.	S.F Nos. 19/1, 2A etc	Ariyalur Taluk & District Periyathirukon am Village	Patta 4.38.0	-	4.38.0	D.G.M.  Progs. No. 4725/MM / 99  Dated 16.10.200 2	13.1.2003	20 years  14.1.2003 to 13.1.2023
44	Thiru. C.R. Shanmugam  Plot No.28, D.No.221, Ganapathi Nagar,  West Extension  Thiruvanaikoil, Trichy.	S.F. No. 1/1A, 1B etc	Ariyalur Taluk,  Alanthuraiyar- kattalai Village,  Ariyalur District.	Patta 4.45.0	-	4.45.0	Govt., letter No.2(D) No.48 / Inds/ (MMA2) Dept., dated 28.10.200 8	27.11.08	20 years  12.12.08 to 11.12.28
45	Thiru. C.R. Balakrishnan, Plot No. 28 Room No.221, Ganapath Nagar, Thiruvanaikovil, Trichy.	S.F. Nos. 115/7E, 8B,Etc	Ariyalur Taluk & District  Alanthuraiyar- Kattalai Village	Patta 4.76.5	-	4.76.5	Progs. No.18508 / MM4/98  Dated 25.04.200 2	05.7.2002	20 years  16.7.2002 to 15.7.2022

46	Tvl. Vijay Cements, 2/4 Lawsons Road, Contonment, Trichirappalli	S.F. Nos. 30/2D, 30/3B etc.,	Ariyalur Taluk & District Karuppursena- pathy Village,	Patta 3.88.0	-	3.88.0	Progs No. 7352/ MM4/200 0, Dated 28.04.200 3	9.05.2003	20 years 20.5.2003 to 19.5.2023
47	Jeppiaar Cements P Ltd., Thittakudi Road, Keelamathur, Kunnam Taluk, Perambalur District.	S.F. Nos. 11/8, 9, 10Etc.,	Ariyalur Taluk & District Alanthuraiyar- Kattalai Village.	Patta 4.49.0	-	4.49.0	G.O.(3D) No. 150, Dated 10.09.199 7	05.02.98	20 years 05.2.1998 to 4.2.2018



48	A. Mohamed Feroz, Proprietor, Crescent Mines & Minerals, 15 III Cross, Paramasivapuram Lalgudi Taluk.	S.F. Nos. 12/11, 13/9 etc	Ariyalur Taluk & District Alanthuraiyar-Kattalai Village	Patta 3.31.0	-	3.31.0	Progs No. 13832/MM4/2000, Dated 06.04.2003	6.5.2003	20 years 14.5.2003 to 13.5.2023
49	Kumaran Mines and Minerals, II Cross, Alagappa Nagar, Ariyalur.	Patta 1/3A, 3B etc	Ariyalur Taluk, Reddipalayam Village	Patta 0.79.5	-	0.79.5	Progs No. 13493/MM4/2001, Dated 19.12.2002	12.01.03	20 years 14.01.03 to 13.01.23
50	Kumaran Mines and Minerals, II Cross, Alagappa Nagar, Ariyalur.	Patta S.F. No. 162/6A, 6B Etc	Ariyalur Taluk, Reddipalayam Village	Patta 0.64.0	-	0.64.0	Progs. No. 13494/MM4/2001, Dated 19.12.2002	8.01.2033	20 years 14.01.03 to 13.01.23
51	K.Ganesan, K.Subramaniyan S/o A. Kathirvel	S.F. No. 13/1A, 1B	Ariyalur Taluk, Alanthuraiyar-	Patta	-	4.49.0	Progs. No. 14609/	4.07.2003	20 years

	moopanar, A.Panangur Village, Sundakkudi Post, Ariyalur Tk , Perambalur District.	etc	Kattalai,	4.49.0			MM4/199 9, Dated 20.03.200 3		14.07.03 to 13.07.23
52	Thiru. S. Saravanan, Dandapani Cements, Samayapuram.	S.F Nos. 6/4 etc	Ariyalur Taluk, Karupoorsena- Pathi Village	Patta 4.67.0	-	4.67.0	DGM Progs. No. 14720/ MM1/200 4 dated 21.12.200 5	07.2.2006	20 years 03.3.2006 to 02.3.2026
53	Tvl. Ultra Tech Cement Ltd, Reddipalayam	Patta S.F.No.242, 243,/1A & etc.,	Ariyalur Taluk, Pudupalayam &	Patta 27.00.5 Porambok e 5.64.0	-	32.64.5	G.O. (3D) No.82 Inds.	10.02.06	20 years 3.3.2006 to 2.3.2026

	Village, Ariyalur Taluk & District.	Poramboke S.F. No. 332/2, 334, 249, 251/11	Reddipalayam, Ariyalur District.	Total Extent 32.64.5			dt. 22.08.200 5		
54	Tvl. Ultra Tech Cement Ltd, Reddipalayam Village, Ariyalur Taluk & District.	Patta S.F. No. 337/1, 337/2 and etc., Poramboke S.F.No. 337/3, 338 and etc.,	Ariyalur Taluk, Reddipalayam Village, Ariyalur District	Patta 28.83.0 Porambok e 14.57.0 Total Extent 43.40.0	-	43.40.0	G.O.(4D) No.3 Inds. Dept. dated 20.09.200 5	10.02.06	30 years 25.04.06 to 24.04.36
55	Tvl. Ultra Tech Cement Ltd, Reddipalayam Village, Ariyalur Taluk & District.	Patta S.F. No. 34, 49 and etc., Poramboke 34/1, 54/26 and 54/27	Ariyalur Taluk, Periyagalur Village, Ariyalur District.	Patta 3.72.5 Porambok e 1.26.0 Total Extent 4.98.5	-	4.98.5	G.O. 3(D) No.94 Inds. Dept. (MMA2) Dated 20.09.200 5	10.02.06	20 years 03.03.06 to 02.03.26

56	Tvl. Ultra Tech Cement Ltd, Reddipalayam Village, Ariyalur Taluk & District.	Patta S.F. No. 13/11, 15/3D etc	Ariyalur Taluk, Alanduraiyar-kattala Villagei, Ariyalur District.	Patta 35.22.0	-	35.22.0	Progs. No 4557/MM 1/ 2005, dt.24.09.08.	17.2.2009	20 years 1.04.2009 to 31.3.2029
57	Tvl. Ultra Tech Cement Ltd, Reddipalayam Village, Ariyalur Taluk & District.	Patta S.F. No. 64/1A, 417/3, 4B, etc	Ariyalur Taluk, Edaiyathankudi Village, Ariyalur District.	Patta 10.41.0 Porambok e0.13.5	-	10.54.5	G.O (4D2) No.2, Ind. Dated: 31.08.2005 & Govt. Lr. No.147, Ind. Dept., dated: 26.07.2012	17.10.12	20 years 13.12.2012 to 12.12.2032
58	Tvl. Ultra Tech Cement Ltd., Reddipalayam Village, Ariyalur Tk & District.	S.F Nos.13/3A, 3B, etc.,	Ariyalur Taluk, Alanthuraiyar-kattalai Village, Ariyalur District	Patta 8.14.0	-	8.14.0	CGM. Progs. No.18180 /MM1/98 , dated: 31.01.2006 & Govt. Lr.	17.10.12	30 years 13.12.2012 to 12.12.2042

							No.142, Ind. Dept., dated:  19.07.201 2		
59	Thiru. C.R.S. Ramachandran  Plot No.28, D.No.221, Ganapathi Nagar,  West Extension  Thiruvanaikoil, Trichy.	S.F Nos. 3/3, 4/1, 6/1 etc	Ariyalur Taluk, Alanthuraiyar- kattalai,  Ariyalur District.	Patta  4.88.0	-	4.88.0	Govt., letter No.2(D) No.47 / Inds/ (MMA2) Dept., dated 28.10.200 8	27.11.08	20 years  12.12.08 to  11.12.28
60	Tvl. Dhandapani Cements Pvt. Ltd., 69, Ganapathy Nagar,  Thiruvanaikovil, Trichy -5.	S.F.No.20/ 1A 1B, 1C, 24/12A, 206/3 etc.,	Chinnapattaka du,  Ariyalur Taluk &  District.	Patta  4.93.0 Hects	-	4.93.0	CGM Proc No.1977/ MM1/201 0, Dated 24.06.201 1	14.09.11	30 years  21.9.2011  to  20.9.2041

61	Tvl. Dhandapani Cements Pvt. Ltd., 69, Ganapathy Nagar, Thiruvanaikovil, Trichy -5.	S.F. Nos. 181/1A, 187/1C & 201/2B etc.,	Chinnapattakadu, Ariyalur Taluk, Ariyalur District.	Patta 4.94.0	-	4.94.0	CGM Proc No.1979/MM1/2010, Dated 24.06.2011	16.09.11	30 years 21.9.2011 to 20.9.2041
62	Tvl. Chettinad Cement Corp., Ltd., Rani Seethai Hall Building, 603, Anna Salai, Chennai -6.	S.F. Nos. 110/1A, 110/1B & 11/1C etc.,	Sendurai Village, Sendurai Taluk, .	Patta 21.92.5 Hects	-	21.92.5	CGM Proc No.2390/MM1/2009, Dated:17.04.15	10.01.17	50 Years
63	Tvl. Chettinad Cement Corp., Ltd., Rani Seethai Hall Building, 603, Anna Salai, Chennai -6.	S.F. Nos. 153/16, 153/17 & 153/18 etc.,	Periyathirukonam Village, Ariyalur Taluk	Patta 32.29.5 Hects	-	32.29.5	CGM Proc No.7135/MM1/2010 dt:09.01.17	11.01.17	50 Years

64	Tvl. Chettinad Cement Corp., Ltd., Rani Seethai Hall Building, 603, Anna Salai, Chennai -6.	Patta S.F. Nos. 1,3 &4 etc., Poramboke S.F.No. 137, 141 & 143 etc.,	Karuppur Senapathy, Keelapalur villages, Ariyalur Taluk.	Patta 25.20.0 Poramboke 0.94.5 Total extent 26.14.5	-	26.14.5	G.O.(ms) No.133, Ind (MMA2) Dept, dt:17.10.16	10.01.17	50 Years
65	Tvl.Dalmia Cement Bharat) Ltd., Lalguti Taluk, Dalmiapuram	Patta S.F. Nos.103/1C1, 103/1C2 & 103/1C3 etc., Poramboke S.F.No. 124/1	Ameenabad, Kairulabad & Kallankurichy Villages, Ariyalur Taluk	Patta 24.07.0 Poramboke 2.87.0 Total extent 26.94.0	-	26.94.0	G.O.(ms) No.2, Ind (MMA2) Dept, Deted:06.01.17	10.01.17	50 Years
66	Tvl.Dalmia Cement Bharat) Ltd., Lalguti Taluk,	Patta S.F. Nos.29/6A, 29/6B & 30/1A etc.,	Periyanagalur, Kairulabad villages, Ariyalur Taluk.	Patta 11.66.5 Poramboke	-	15.48.0	G.O.(ms) No.3, Ind (MMA2) Dept, dt:06.01.17	10.01.17	50 Years

	Dalmiapuram	Poramboke S.F.No.29/ 8, 31/12 &37		3.81.5  Total extent  15.48.0					
67	Tvl.Dalmia Cement Bharat) Ltd., Lalguti Taluk, Dalmiapuram	Governmen t Poramboke S.F. Nos.103/2, 114/2, 116/1,117/ 2,118/2 & 126/2	Aminabad Village, Ariyalur Taluk	Governme nt Porambok e  0.84.5 Hects	-	0.84.5	G.O.(ms) No.106, Ind (MMA2) Dept, dt:12.05. 15	10.01.17	50 Years
68	Tvl. Madras Cements Ltd., 98-A Auras Corporate Centre, Radhakrishnan Road, Chennai.	S.F. Nos. 229/1, 267, 269, 271 & 268/1 etc.,	PeriyanaGalur village, Ariyalur Taluk	Patta  0.44.5  Porambok e  16.91.5  Total extent  17.36.0	-	17.36.0	G.O.(ms) No.153, Ind (MMA2) Dept, dt:23.12. 16	10.01.17	50 Years
69	Tvl. Madras Cements Ltd., 98-A Auras	S.F. Nos.146/2, 146/3,	Adhanakurichi, Manakudayan	Patta  49.28.5	-	49.28.5	CGM Proc No.4384/ MM1/201	11.01.17	50 Years



	Corporate Centre, Radhakrishnan Road, Chennai.	87/6A & 87/6B	Villages, Sendurai Taluk	Hects			0 dt:09.01.17		
70	Tvl. Madras Cements Ltd., 98-A Auras Corporate Centre, Radhakrishnan Road, Chennai.	S.F. Nos.319/2B , 319/5B1 & 319/5B2 etc.,	Kallankurichi Village Ariyalur Taluk	Patta 24.55.0 Porambok e 0.55.5 Total extent 25.10.5	-	25.10.5	G.O.(ms) No.152, Ind (MMA2) Dept, dt:23.12.16	10.01.17	50 Years
71	Tvl. India Cements Ltd., Dhun Building 827,Anna Salai, Chennai.	S.F. Nos.3/1A1 etc.,	Periyathirukon am Reddipalayam & Edaiyathankud i Villages Ariyalur Taluk.	Patta 74.81.0 Hects	-	74.81.0	CGM Proc No .13035/M M1/1999, dt:10.01.17	11.01.17	50 Years

72	Tvl. Ultra Tech Cement Ltd, Reddipalayam Village, Ariyalur Taluk & District.	S.F. Nos.343/2, & 343/3A etc.,	Kairulabad Village Ariyalur Taluk	Patta 24.63.5 Hects	-	24.63.5	CGM Proc No .7058/M M1/2009, dt:14.12.16	10.01.17	50 Years
73	Tvl. Ultra Tech Cement Ltd, Reddipalayam Village, Ariyalur Taluk & District.	S.F. Nos.55/2, 58/11 & 60/11 etc.,	Ottakovil Village Ariyalur Taluk	Patta 74.38.0 Hects	-	74.38.0	CGM Proc No .7057/M M1/2009, dt:14.12.16	10.01.17	50 Years

### 3. The List of Quarry Lease details

The commodity/item wise details of Quarry Leases in Ariyalur District is given below:

#### Name of the Mineral: Fireclay

Sl. No.	Name and Address for correspondence, Telephone No., Fax No., Mobile No., Email	Location of lease		Lease Area (Hects)	Area under		Date of Grant of lease (original and sub - sequent renewals)	Date of execution (original and sub-sequent renewals)	Period (Years)
		S.F. No.	Village, Taluka, Post office, Railway Station, and District)		Fore st Area (Hect .)	Non-Forest Area (Hect., )			
1	2	3	4	5	6	7	8	9	10
1	Thiru.M.Vijayakumar  SSV Mines, No. 26, Ram Nagar, Karumandapam Tiruchirappalli.	S.F Nos. 6/6, 8, 9, 10	Udayarpalayam Taluk, Managathi Village  Ariyalur District.	Patta 0.67.0	-	0.67.0	Commr. Progs. No. 2825/MM3/2002 dated 20.09.2002	30.09.02	20 years  7.10.2002 to 6.10.2022
2	Thiru.A. Abdullah, S/o.Adam, 10/10B, North Street, T.Pottakkollai.	S.F. No. 253/10A, 253/10B, 253/11, 12,16/1 & 16/2	Udayarpalayam Taluk, Managathi & J.Thathanur Village,  Ariyalur District.	Patta 2.26.0	-	2.26.0	Comm., Progs., No.8814/MM/2004  Dated 07.03.2005	01.04.05	20 years  04.04.05 to 04.04.25

	Z.Thathanur(v), Udayarpalayam(Tk)								
3	P. Muralitharan. OM Sakthi Mineral Works, No.44, Anna Nagar, AriyalurTk	S.F. No. 7/3,4,5,6, 7 & 253/4	Udayarpalaya m Taluk, Managathi& J.Thathanur Villages, Ariyalur District.	Patta 1.22.5	-	1.22.5	Commr. Progs No. 4042/ MM3/2002  Dated 03.03.2005	01.04.05	20 years  11.04.05 to 10.04.25
4	P. Muralidaran, OM Sakthi Mineral Works, No.44, Anna Nagar, AriyalurTk	Patta 16/3,4,5, 6, 7,8,11,12, 13,14,15, 19/ 1&2	Udayarpalaya m Taluk, Managathi Village. Ariyalur District.	Patta 1.83.5	-	1.83.5	DGM Progs No. 5032/ MM3/2004  Dated 15.09.2004	20.10.04	20 years  22.11.04 to 21.11.24

5	K. Ezhilarasan, Parhavan Hospital, Pullambadi Post, Lalgudi Taluk, Trichy District.	S.F. No. 250/1 4/4B, 6/1	Udayarpalaya m Taluk, Thathanur Village Managathi, Ariyalur District.	Patta 1.31.5	-	1.31.5	CGM, Progs No. 13004/MM3 /2004 dated 22.05.06.	16.11.06	20 years 20.11.06 to 19.11.26
6	P.Sundarapandi yan S/o Panchapakesan 8-4/13 Annanagar Ariyalur Tk	S.F. No. 169/2,16 9/3A etc.,	Udayarpalaya m Taluk, Keelanatham Village Ariyalur District	Patta 4.00.5	-	4.00.5	CGM, Progs No. 13072/MM3 /2010 dated 12.04.13.	10.10.13	20 years 02.01.14 to 01.01.34

7	P.Ravichandran S/o.Panchapake san 43 Annanagar Ariyalur Tk	S.F. No. 172/1,17 3/1A etc.,	Udayarpalaya m Taluk, Keelanatham Village Ariyalur District	Patta 4.22.5	-	4.22.5	CGM, Progs No. 13071/MM3 /2010 dated 12.04.13.	10.10.13	20 years 02.01.14 to 01.01.34
8	P.Rajachandrase karan S/o.Panchapake san 44 Annanagar Ariyalur Tk	S.F. No. 153/3A,1 53/3B etc.,	Udayarpalaya m Taluk, Keelanatham Village Ariyalur District	Patta 4.14.0	-	4.14.0	CGM, Progs No. 13073/MM3 /2010 dated 12.04.13.	10.10.13	20 years 02.01.14 to 01.01.34

**Name of the Mineral: Gravel**

Sl. No.	Name and Address of the lessee	Location of lease		Lease Area (Hects)	Quantity permitted to be removed	Period (Years)
		S.F. Nos.	Village, Taluk,			
1	2	3	4	5	6	7
1	K.Manickaraj, No1/44, Kuttakarai Village, Katharandam Post, Udaiyarpalayam Taluk, Ariyalur.	672/1, 4, 3, 4A, 4B & 5.	Udaiyarpalayam (E),  Udaiyarpalayam.	1.21.0 Hects.  Patta	SEIAA- TN/F.No2202/ EC/1(a)/1159 dt.03.03.2014  14934CBM  (d=2mt)	Rc.No.291/G&M/ 2013 Dated: 08.08.2014  Three years  From : 23.08.2014  To : 22.08.2017
2	V.Selvakumar, S/o. S.R.Viswanathan, 2/57, Cholankudikadu Village, Sendurai Taluk, Ariyalur District.	173/3B&1 73/4	Sendurai Taluk,  Ponparappi.	1.58.5 Hects	SEIAA- TN/F.No2796/ EC/1(a)/1944 dt.01.04.2015 26600CBM  (d=2mts)	Rc.No.64/G&M/2 014 Dated: 31.07.2015 Three years From : 11.08.2015 To : 10.08.2018
3	R.Vikramathithan, S/o P.Ramakrishanan, Andimadam Village, 37B, west street, Silampur (Po), Udayarpalayam Taluk, Ariyalur.	19/1B	Udayarpalayam Taluk,  Andimadam.	3.91.50 Hects.	SEIAA- TN/F.No3660/ EC/1(a)/2226 dt.23.10.2015 157565CBM  (d=2mts)	Rc.No.186/G&M/ 2015 Dated: 30.10.2015  Three years  From : 02.11.2015  To : 01.11.2018

4	Thiru.P.Ramadoss, S/o.Thiru.Panneerselvam No.3/104, Barathithasan St, Senguthapuram (Po), Udayarpalayam Taluk, Ariyalur District .	133/1B & 133/2B	Udayarpalayam Taluk,  Senguthapuram.	1.12.10 Hects.	SEIAA, TN/F. No.4433/EC/1 (a)/2574/2015, dated: 21.12.2015. 20880 CBM	Rc.No.203/G&M /2015, Dated: 28.01.2016.  2 years  From : 01.02.2016  To : 31.01.2018
5	Thiru. G.Selvadurai, S/o.Govindasamy, 565, Kuttakarai, Silampur (Po), Udayarpalayam Taluk, Ariyalur District.	516/2B, 517/2 & 517/3	Udayarpalayam Taluk,  Silampur	3.76.0 Hects.	SEIAA-TN F.No.5044/1(a) / EC.No. 2895/2015 dt.17.02.2016.  191425 CBM	Rc.No.15/G&M /2016, Dated: 24.02.2016.  3 years  From : 26.02.2016  To : 25.02.2019
6	Thiru.T.Vilvanathan S/o Thangarasu, Thennavanallur Village, Udayarpalayam Taluk, Ariyalur District.	291/2,	Thennavanallur Village, Udayarpalayam Taluk,	0.70.5 Hects.	SEIAA-TN F.No.2816/EC/ 1 (a)/2318/2014 dt.27.10.2015.  8800 CBM	Rc.No.37/G&M /2014, Dated: 28.01.2016.  2 years  From : 01.02.2016  To : 31.01.2018





**MINERALWISE /LEVY WISE/ MONTH WISE MINERAL REVENUE COLLECTION FOR THE YEAR 2015-2016**

MONTH & YEAR	MAJOR MINERALS							MINOR MINERALS																																								
	Royalty				APPLICATION FEES, S.R, D.R.	Annual Compensation, Penalty & Interest ( etc.)	PEL FEE	SEIGNIORAGE FEE				BRICK		APPLICATION FEE			AREA ASSESSMENT		DEA D REN T	PENALTY					Any Other Amount (Interest)	TOTAL (Reconciled figure)																						
	LIME STONE	Marl	Crude oil	Fire clay				Gravel	Kankar	Pebble	Black Clay/ Earth	Registration Fee	Annual Brick Mineral Fee	Gravel	Sand	Kankar/Earth	Black clay	Gravel/ Kankar		Gravel	Stone	Sand	Earth/Kankar/Pe bbles	Gravel																								
1	2	3	4	5	6	7	8	9	10	11	12	13	14	15	16	17	18	19	20	21	22	23	24	25																								
April- 15	73276965	0	0	371400	PL*	0	0	225000	0	0	0	0	0	0	0	0	0	0	0	0	0	0	0	0	25000																							
					DR*	0																			0	0	0	0	0	0	0	0	0	0	0	0	0	0	0	0	0	0	0	0	0	0		
					SR*	2006																			0	0	0	0	0	0	0	0	0	0	0	0	0	0	0	0	0	0	0	0	0	0	0	0
May - 15	97104690	0	1300000	254200	PL*	11500	574384	0	1378000	0	0	0	0	0	0	0	0	277	0	0	0	0	0	0	0	50360																						
					DR*	0	0																			0	0	0	0	0	0	0	0	0	0	0	0	0	0	0	0	0	0	0	0	0	0	
					SR*	14467	0																			0	0	0	0	0	0	0	0	0	0	0	0	0	0	0	0	0	0	0	0	0	0	0
June- 15	100454326	0	0	607600	PL*	2500	0	202500	0	0	0	0	0	4500	0	0	0	0	0	0	0	0	0	0	0	150360																						
					DR*	0																				0	0	0	0	0	0	0	0	0	0	0	0	0	0	0	0	0	0	0	0	0	0	0
July-15	114565032	0	0	787400	DR*	0	13223157	0	475850	0	0	0	0	0	3000	6500	0	0	0	0	0	0	0	0	0	350000																						
					AF*	0	0																			0	0	0	0	0	0	0	0	0	0	0	0	0	0	0	0	0	0	0	0	0	0	
					PL*	0	0																			0	0	0	0	0	0	0	0	0	0	0	0	0	0	0	0	0	0	0	0	0	0	0
Aug- 15	98796748	0	0	601400	SR*	320	0	325000	0	0	0	100	0	1500	0	0	0	600	0	0	35540	25180	50000	0	99836388																							
Sep-15	107296529	0	0	1060200	SR*	2500	390656	0	48750	0	0	0	0	1500	0	0	0	0	0	0	0	0	0	0	0	394975																						
					PL*	0	0																			0	0	0	0	0	0	0	0	0	0	0	0	0	0	0	0	0	0	0	0	0		
Oct - 15	72703981	0	0	1023000	PL*	0	0	0	715575	0	0	0	0	0	0	0	0	0	0	0	0	0	0	0	130990																							
Nov- 15	53820889	0	0	279000	PL*	1500	0	0	255625	0	0	0	0	0	0	0	0	0	0	0	0	0	0	0	61900																							
					SR*	0	0																		0	0	0	0	0	0	0	0	0	0	0	0	0	0	0	0	0	0	0	0	0			
Dec- 15	79881327	0	0	558000	DR*	128196	109510	0	165000	0	0	0	0	0	0	0	0	0	0	0	0	0	0	0	0																							
					PL*	0	0																		0	0	0	0	0	0	0	0	0	0	0	0	0	0	0	0	0	0	0	0	0			
Jan-16	83766452	0	553850	1054000	SR*	730	14438	0	246250	0	0	0	0	3000	10000	0	0	302	0	0	0	0	0	0	0																							
					SR**	0	0																		0	0	0	0	0	0	0	0	0	0	0	0	0	0	0	0	0	0	0	0	0			
Feb - 16	102160387	0	0	1364000	SR*	2994	512152	0	3222500	0	0	0	0	0	0	0	0	2400	0	0	0	0	0	0	0																							
					PL*	0	215880																		0	0	0	0	0	0	0	0	0	0	0	0	0	0	0	0	0	0	0	0	0			
Mar - 16	137294199	0	0	2050377	DR*	938610	378815	0	189500	0	0	0	0	0	0	0	0	0	0	0	0	0	0	0	0	25180																						
					SR*	14576	390397																			0	0	0	0	0	0	0	0	0	0	0	0	0	0	0	0	0	0	0	0			
					SR**	140	0																			0	0	0	0	0	0	0	0	0	0	0	0	0	0	0	0	0	0	0	0	0	0	0
					PL*	1500	0																			0	0	0	0	0	0	0	0	0	0	0	0	0	0	0	0	0	0	0	0	0	0	0
<b>TOTAL</b>	<b>1121121525</b>	<b>0</b>	<b>1853850</b>	<b>10010577</b>	<b>1121539</b>	<b>15809389</b>	<b>0</b>	<b>7449550</b>	<b>0</b>	<b>0</b>	<b>0</b>	<b>100</b>	<b>0</b>	<b>13500</b>	<b>16500</b>	<b>0</b>	<b>0</b>	<b>3579</b>	<b>0</b>	<b>0</b>	<b>688255</b>	<b>1267225</b>	<b>476494</b>	<b>0</b>	<b>1159832083</b>																							

*			<b>Limestone</b>
**			<b>Fire Clay</b>

Major Minerals	
S.R	37733
D.R	1066806
Appln. Fee	0
P.L Appln. Fee	17000
<b>Total</b>	<b>1121539</b>

Major Minerals	
Interest	620715
Penalty	13223157
Annual Compensation	1965517
<b>Total</b>	<b>15809389</b>

Minor Minerals	
Regn.Fee	100
A.A	3579
Appln. Fee	30000
Penalty	2431974
<b>Total</b>	<b>2465653</b>

ABSTRACT	
(a)	1149916880
(b)	7483229
©	2431974
<b>Total</b>	<b>1159832083</b>

**MINERALWISE /LEVY WISE/ MONTH WISE MINERAL REVENUE COLLECTION FOR THE YEAR 2016-2017**

MONTH & YEAR	MAJOR MINERALS					MINOR MINERALS															
	Royalty		APPLICATION FEES, S.R, D.R.	Annual Compensation, Penalty & Interest ( etc.,)	PEL FEE	SEIGNIORAGE FEE			APPLICATION FEE				AREA ASSESSMENT		DEAD RENT	Penalty			Any Other Amount (Interest)	TOTAL (Reconciled figure)	
	LIME STONE	Crude oil				Gravel	Earth	Fire clay	Gravel	Sand	Fire clay	Kankar/Earth	Earth	Gravel/ Kankar	Gravel	Sand	Earth/Kankar/Pebbles	Gravel			
1	2	3	4	5	6	7	8	9	10	14	15	16	17	18	19	21	22	23	24	25	
April- 16	77211255	0	PL*	0	183336	0	166875	0	1147000	0	0	0	0	0	0	60890	0	0	0	0	
			DR*	0	0					0											
			SR*	5263	0					0											
May - 16	89249266	1300000	PL*	0	391048	0	77250	0	912600	0	0	0	0	0	0	0	0	25180	52680	0	92020304
			DR*	0	0					0											
			SR*	12280	0					0											
June- 16	98639101	0	AF*	21500	0	0	233125	0	1116000	1500	10000	0	0	0	0	15390	0	0	0	0	100062916
			DR*	0	0					0											
			SR*	0	0					26300											
July-16	97738829	0	AF*	30000	0	0	208950	0	868000	1500	0	0	0	0	0	30780	238580	0	25670	0	99142309
			DR*	0	0					0											
			PL*	0	0					0											
Aug- 16	118130743	0	SR*	0	0	0	648000	0	1271000	0	0	0	0	0	0	118081	85260	70329	0	120323413	
			PL*	0	0					0											
Sep-16	91515345	0	SR*	0	390656	0	229200	1800000	558000	1500	0	0	490	0	0	0	5130	0	0	0	94500321
			PL*	0	0					0											
Oct - 16	83622644	0	SR*	250	0	0	165000	0	713000	3000	0	0	0	0	0	30800	75740	0	25670	0	84661904
			PL*	0	0					0											
			SR*	1986	0					25800											
Nov- 16	108383533	0	PL*	0	0	0	172500	0	682000	1500	0	0	0	0	0	60755	25670	0	51340	0	109379284
			SR*	1986	0					0											
			PL*	0	0					0											
Dec- 16	103221413	0	SR*	634	1957776	0	195000	0	1972692	0	0	10000	0	0	0	25670	50360	0	0	0	107513370
			PL*	0	52925					26900											
			SR*	165418	1081710					25670											
Jan-17	87935797	0	DR**	0	0	0	182500	0	217000	0	0	0	0	0	0	10260	0	25670	0	89644025	
			SR*	0	0					0											
Feb - 17	83434930	0	SR*	0	0	0	162500	0	0	0	0	0	0	0	0	25670	25670	0	0	83648770	
			PL*	0	0					0											
Mar - 17	202711600	0	PL*	0	834529	0	175875	0	227936	0	10000	0	0	0	0	0	25670	0	51340	0	205061424
			DR*	988580	0					0											
			SR**	9294	0					26600											
			PL*	0	0					0											
<b>TOTAL</b>	<b>1241794456</b>	<b>1300000</b>		<b>1235205</b>	<b>4891980</b>		<b>2616775</b>	<b>1800000</b>	<b>9685228</b>	<b>9000</b>	<b>20000</b>	<b>10000</b>	<b>0</b>	<b>490</b>	<b>0</b>	<b>0</b>	<b>383426</b>	<b>683400</b>	<b>302699</b>	<b>0</b>	<b>1264732659</b>

Major Minerals	
S.R	195125
D.R	988580
Appln. Fee	51500
P.L Appln.	0
<b>Total</b>	<b>1235205</b>

Major Minerals		Minor Minerals	
Interest	52925	A.A	490
Penalty	0	Appln. Fee	39000
Annual Compensation	4839055	Penalty	1369525
<b>Total</b>	<b>4891980</b>	<b>Total</b>	<b>1409015</b>

ABSTRACT	
(a)	1249221641
(b)	15511018
©	0
<b>Total</b>	<b>1264732659</b>

## **11. Details of production of Sand / Bajari / Minor Minerals in the last three years (2014-15 to 2016-17)**

There are no existing leases for River Sand and Bajariin in Ariyalur District.

## **12. Conclusion**

This District Survey Report has been prepared in a short span of time by doing rapid field work. The details related to the occurrence of mineral resources and other data of the district are subject to updation from time to time. Before grant of any quarry lease, the parameters related to geosciences and sustainable developments are to be considered on the basis of ground reality.

The Ariyalur District is having very large deposits of Limestone unexplored areas may be explored for increasing the revenue of the district.