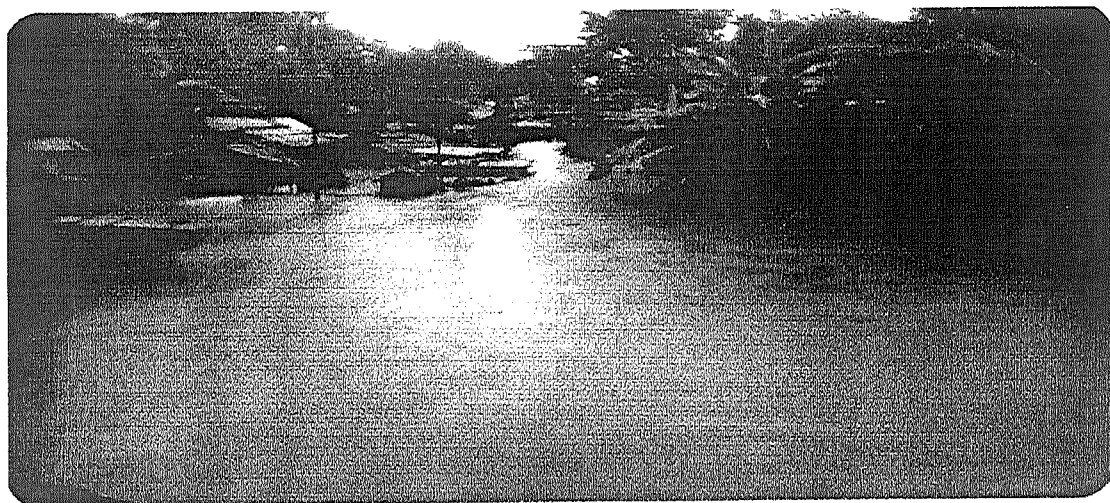


## LYNNONG 3

### KA JINGSHLEI UM



#### KI JINGIADA KIBA LAH BAN SHIM

- Sngap ia ka radio/TV ia ka khubor jinglong jong ka suinbneng bad ki jingmaham ia ka jingtyllep ka umsaw. Pyntip lang ia kiwei ruh.
- Pynbiang lypa ia ki jingdonkam kiba kongsan jong ka iing kynthup ia ka radio/transistor, torch, ki bateri, ka synduk first aid ryngkat bad ki dawai, ORS, ki jingbam tyrkhong, ka umdih, ka jingpruid, ki mombati bad kiwei ki tiar kiba donkam.
- Buh lypa ha iing ia ka lynten sharak, ki tyllai, ki tyndong jri, ka shatri bad ki siej. Buh bha ha ka jaka ba shngain ia ka pisa, ki jingdeng ba kordor, ki jingdon jingem, ki kot ki sla ba donkam bad kiwei.
- Pynlip ia ka bording bad ka gas shwa ban mih na iing.
- Kynrong ne shna hajrong ia ka jaka shet jingshet, ka kor pynkhluit um bad ki jaka pyndait bording elektrik lada ka jaka ba phi sah ka dei kaba ju jia ka jingshlei um.
- Buh ia ki 'check valves' ha ki jaka pyntuid jakhlia ban khanglad ia ka um kaba shlei na kaba tuid sha ki nala jong ka iing jong phi.

#### HA KA POR BA SHLEI UM:

- Long husiar na ka jingtyllep ka umsaw kaba lah ban jia. Lada ka jingtyllep ka umsaw ka lah ban wan, phet wut wut sha ka jaka ba kynjang. Wat ap ia ki jingbatai ne jingpynbna ban phet jaka. Wat ju leit sha ka umsaw, ka long

kaba mynsaw.

- Wat leit shajan ki nur pyntuid jakhlia, ki thliew, ki nur, ki nur heh ba pyntuid um bad kiwei.
- Husiar bha na ki bsein namar ka jingshah puh bsein ka kynrei bha ha ka por ba tyllep ka umsaw.
- Phet jngai na ki paia elektrik bad ki sainar elektrik kiba hap ha madan ban iada na ka jingshah bat bording.
- Wat ju pyndonkam ia ki tiar elektrik kiba jhieh – phah peit ia ki shwa ba phin pyndonkam.
- Pyndonkam da ka umdih kaba la shet bad kaba la pjiar bha.
- Ka jinglang ka um ka lah ban pynkha ia ki khniang jingpang kiba lah ban ioh na ka um. Lada jia ba shitom, wad ia ki lad jingsumar.
- Pyndonkam ia u powdar bleaching bad ka shun ban pyniap ia ki khniang jingpang na ki sawdong sawkun.

**Lada phi hap ban mih na iing, kynmaw ia ki buit bad jingbatai:**

- Wat ju iaid lyngba ka um kaba tuid. Lada ka umtuid ka jylliew hynriew inshi phin sa kyllon. Lada phi hap ban iaid hapdeng um, iaid na ka jaka kaba ka um kam tuid. Pyndonkam da u dieng ban peit ia ka jingskhem jong ka khyndew.
- Wat ju niah kali ha ka jaka ba shlei um. Lada ka um ka shlei sawdong jong phi, ieh ia ka kali bad phet shaba kynjang lada phi don lad. Maphi bad ka kali jing phi ka lah ban shah rong ha ka um.