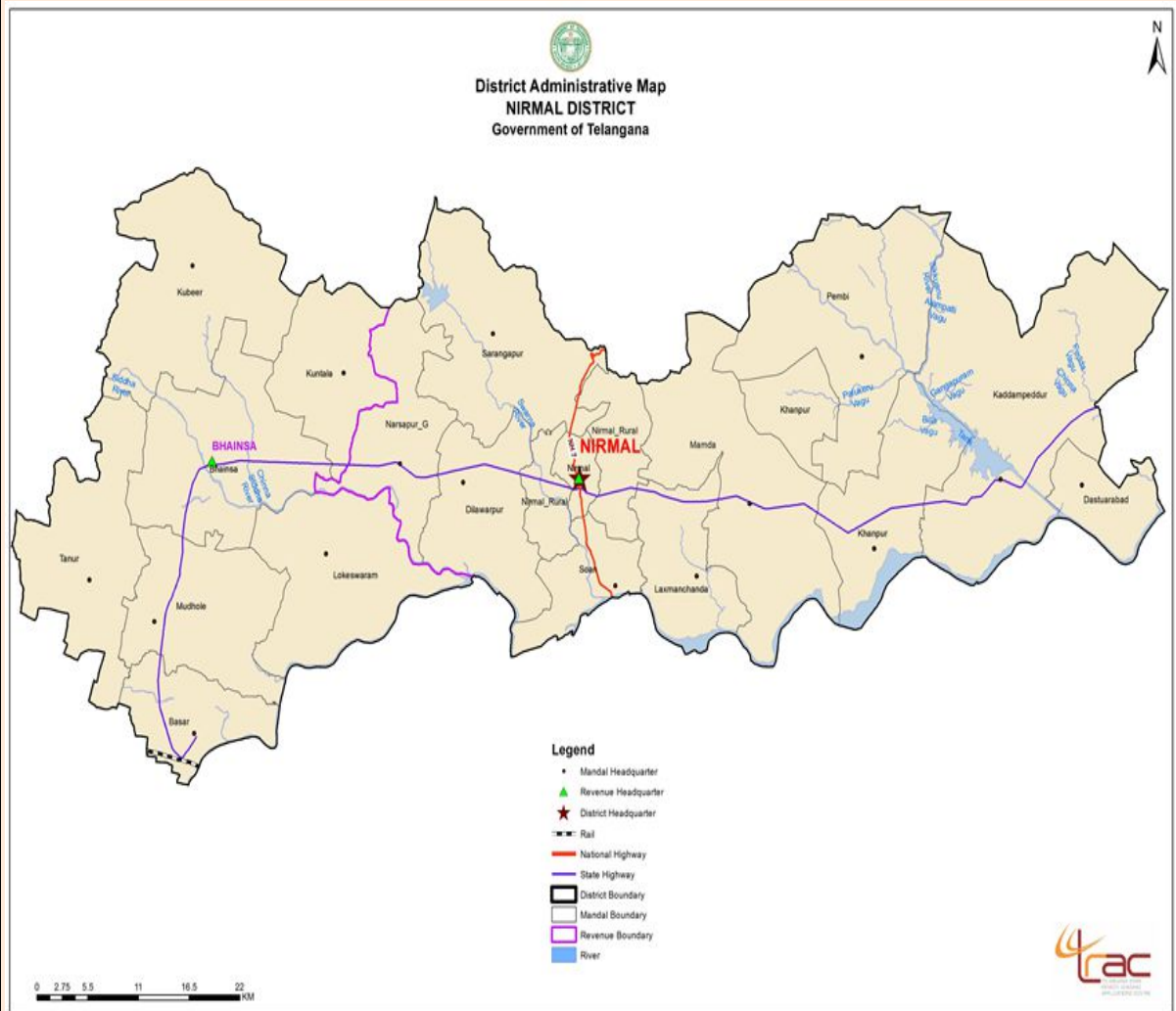


DISTRICT AT A GLANCE - NIRMAL



Government of Telangana
Planning Department
2016

DISTRICT AT A GLANCE - NIRMAL

#	Parameters	Unit	State	Nirmal	%
I.	KEY CHARACTERISTICS				
1	Geographical Area	Sq. Kms.	112079	3845	3.43
2	Administrative Units				
a	Revenue Villages	Nos.	10859	428	
b	Revenue Mandals	Nos.	584	19	
c	Revenue Divisions	Nos.	68	2	
d	Gram Panchayats	Nos.	8695	240	
e	Mandal Praja Parishads	Nos.	438	13	
f	Zilla Parishads	Nos.	9		
g	Municipalities (incl. Corporations & NPs)	Nos.	73	2	
II	DEMOGRAPHIC PROFILE				
1	Population as per 2011 Census				
a	Total	Nos.	35003674	709418	
b	Males	Nos.	17611633	346721	48.87
c	Females	Nos.	17392041	362697	51.13
d	Sex Ratio	Nos.	988	1046	
e	Rural	Nos.	21395009	557736	78.62
f	Urban	Nos.	13608665	151682	21.38
g	% of Rural Population	%	61	79	
h	% of Urban Population	%	39	21	
2	Households	Nos.	8303612	165763	23.37
	Density of the Population	Nos.	312	185	
3	Child Population (0 - 6 Years)				
a	Total	Nos.	3899166	82769	
b	Males	Nos.	2017935	42462	51.30
c	Females	Nos.	1881231	40307	48.70
d	Rural	Nos.	2369374	64486	77.91
e	Urban	Nos.	1529792	18283	22.09
f	Sex Ratio	Ratio		949	
4	Literates				
a	Total	Nos.	20696778	361998	
b	Males	Nos.	11701729	210021	58.02
c	Females	Nos.	8995049	151977	41.98
5	Literacy Rate				
a	Total	%	67	58	
b	Males	%	75	69	
c	Females	%	58	47	
6	Scheduled Castes Population				
a	Total	Nos.	5408800	108085	15.24
b	Males	Nos.	2693127	51678	
c	Females	Nos.	2715673	56407	
d	Sex Ratio	Ratio	1008	1092	
7	Scheduled Tribes Population				
a	Total	Nos.	3177940	80576	11.36
b	Males	Nos.	1607656	39770	
c	Females	Nos.	1570284	40806	
d	Sex Ratio	Ratio	977	1026	

#	Parameters	Unit	State	Nirmal	%
8	Working Population				
a	Total	Nos.	16341942	376760	53.11
b	Males	Nos.	9678177	193870	
c	Females	Nos.	6663765	182890	
9	Occupation of Working Population				
A	Cultivators				
a	Total	Nos.	3151389	103498	14.59
b	Males	Nos.	2009546	63350	
c	Females	Nos.	1141843	40148	
B	Agricultural Labourers				
a	Total	Nos.	5915151	117204	16.52
b	Males	Nos.	2532735	57629	
c	Females	Nos.	3382416	59575	
C	Household Industries				
a	Total	Nos.	776529	58435	8.24
b	Males	Nos.	271767	8048	
c	Females	Nos.	504762	50387	
D	Other Workers				
a	Total	Nos.	6498873	97623	13.76
b	Males	Nos.	4864129	64843	
c	Females	Nos.	1634744	32780	
10	Non Working				
a	Total	Nos.	18661732	332658	46.89
b	Males	Nos.	7933456	152851	
c	Females	Nos.	10728276	179807	
11	Population as per Samagra Kutumbha Sarvey (SKS)				
a	Total Population	Nos.	36876544	751115	
b	SC Population	Nos.	6444537	121522	16.18
c	ST Population	Nos.	3644497	99831	13.29
d	BC Population	Nos.	18841001	422029	56.19
e	OC Population	Nos.	7946509	107733	14.34
12	Minorities Population <i>(includes 11(b to e))</i>	Nos.	5372175	118776	15.81
III.	AGRICULTURE				
1	Land Holdings				
a	Marginal	Nos.	3420202	90750	58.56
b	Small	Nos.	1318390	40308	26.01
c	Semi medium	Nos.	598145	18575	11.99
d	Medium	Nos.	165127	4905	3.17
e	Large	Nos.	15647	425	0.27
	Total	Nos.	5517511	154963	100.00
2	Cropped Area				
a	Gross Cropped Area	Hects.	5339639	172158	
b	Net Cropped Area	Hects.	5381885	143415	
c	Gross Irrigated Area	Hects.	2528326	62302	
d	Net Irrigated Area	Hects.	1735761	38831	
3	Area under				
a	Rice	Hects.	1471710	15333	
b	Jowar	Hects.	83401	1782	

#	Parameters	Unit	State	Nirmal	%
c	Maize	Hects.	712981	16965	
d	Red gram	Hects.	251121	5473	
e	Green gram	Hects.	95524	1515	
f	Black gram	Hects.	31221	1172	
g	Bengal gram	Hects.	80766	2835	
h	Groundnut	Hects.	177914	470	
i	Sunflower	Hects.	17574	91	
j	Chillies	Hects.	82649	1421	
k	Onion	Hects.	19985	316	
l	Sugarcane (Gur)	Hects.	34775	2	
m	Cotton	Hects.	1677492	21897	
4	Agricultural Marketing				
a	Agricultural Market Committees	Nos.	180	5	
b	Rythu Bazars	Nos.	36		
5	Livestock Population				
a	Cattle	Nos.	4880293	211507	28.22
b	Buffaloes	Nos.	4160419	122219	29.97
c	Sheep	Nos.	12835761	280211	37.39
d	Goat	Nos.	4575695	124979	16.68
e	Others	Nos.	620723	10451	1.39
	Total		27072891	749367	
6	Poultry	Nos.	80750833	407794	
7	Veterinary facilities				
a	Veterinary Poly Clinics	Nos.	8	0	
b	Veterinary Hospitals	Nos.	100	3	
c	Veterinary Dispensaries	Nos.	907	29	
d	Mobile Veterinary Clinics	Nos.	37	1	
e	Rural Livestock Units	Nos.	1102	15	
f	Patients treated	Nos.	23841618	663154	
g	Number of Castrations done	Nos.	330832	14146	
h	Number of Vaccinations done	Nos.	53951965	1128398	
IV	HEALTH				
1	Hospitals:				
a	Allopathic Govt. Hospitals (including PHCs),	Nos.	756	20	
b	Dispensaries	Nos.	68	1	
c	Ayurvedic Govt. Hospitals (including Dispensaries)	Nos.	272	3	
d	Homeopathy Govt. Hospitals (including Dispensaries)	Nos.	130	1	
e	Unani Govt. Hospitals	Nos.	141	2	
f	Naturopathy Govt. Hospitals (including Dispensaries)	Nos.	24	1	
g	No. of Doctors in all Govt. Hospitals	Nos.	2595	40	
h	No. of Beds in all Govt. Hospitals	Nos.	20389	198	
V	EDUCATION				
1	No. of Schools:				
	Primary Schools	Nos.	21948	599	
	Upper Primary Schools	Nos.	7189	207	
	High Schools	Nos.	11684	210	
	Total		40821	1016	

#	Parameters	Unit	State	Nirmal	%
2	Enrollment of Children				
	Boys	Nos.	3110974	59906	
	Girls	Nos.	2952339	58807	
	Total		6063313	118713	
3	Teachers working	Nos.	222373	5168	
4	Teacher - Pupil Ratio	Ratio	27	23	
5	Degree Colleges (Including Private & Aided)	Nos.	760	25	
6	Students Enrolled in all Degree Colleges	Nos.	398664	2987	
7	Junior Colleges	Nos.	2700	47	
8	Students Enrolled in Junior Colleges	Nos.	692766	13347	
9	Engineering Colleges (Including Private)	Nos.	320	0	
10	Poly Technic Colleges (Including Private)	Nos.	154	1	
11	Medical Colleges (Including Private)	Nos.	24	0	
VI	SOCIAL SECURITY				
1	Aasara Pensions				
a	Old Age Pensions	Nos.	1344768	33623	
b	Disabled Pensions	Nos.	453594	9976	
c	Widow Pensions	Nos.	1320064	35847	
d	Weavers Pensions	Nos.	34091	29	
e	Toddy Tappers Pensions	Nos.	57203	249	
f	ART Pensions	Nos.	28074	0	
	Total		3237794	79724	
2	FA to Beedi Workers	Nos.	348766	56629	
3	Public Distribution System				
a	Fair Price Shops	Nos.	17229	387	
b	Food Security Cards	Nos.	8207431	186947	
c	Anthodyaya Food Security Cards	Nos.	567911	11725	
d	Annapoorna Cards	Nos.	5084	36	
	Total		8797655	199095	
VII.	POWER				
1	Sub-Stations				
a	33/11 KV	Nos.	2497	63	
b	132/33KV	Nos.	203	4	
c	220/132 KV	Nos.	66	1	
d	400/220 KV	Nos.	7	0	
	Total		2773	68	
2	Electricity Connections				
a	Domestic	Nos.	9504305	167496	
b	Industrial	Nos.	145707	1037	
c	Agriculture	Nos.	2080706	48230	
d	Commercial	Nos.	1171991	14835	
e	Others	Nos.	189046	3143	
	Total		13091755	234741	

#	Parameters	Unit	State	Nirmal	%
VIII.	ROAD INFRASTRUCTURE				
1	Road Length				
a	Roads and Buildings Department				
	a State Highways	Kms.	2768	119	
	b Major District Roads	Kms.	13063	323	
	c Rural Roads	Kms.	9239	234	
	Total	Kms.	25070	676	
b	Panchayati Raj /GHMC Department				
	a Black Top Roads	Kms.	23185	654	
	b WBM Roads	Kms.	13118	169	
	c Gravel Roads	Kms.	16343	354	
	d Earthen Roads	Kms.	18235	656	
	e Others(CC Roads)	Kms.	2899	32	
	Total		73780	1864	
IX.	ROAD TRANSPORT				
1	Road Transport Corporation (RTC)				
	a RTC Bus Depots	Nos.	95	2	
	b RTC Fleet of Buses	Nos.	10482	229	
	c Daily Operated Length	Kms.	3631505	94163	
X.	FOREST(Provisional)				
	a Forest Cover	Sq.Kms	26904	1213.08	
	b Percentage of Forest Cover	%	24.00	31.55	
XI.	IRRIGATION				
	a Total Minor Irrigation Tanks	Nos.	46531	804	
	b MI Tanks covered under Mission Kakatiya	Nos.	16988	320	
XII.	INDUSTRIES (TS-iPASS)				
	a Proposed Industries	Nos.	2540	23	
	b Proposed Investments	Rs. in Crore	44791	22	
	c Proposed Employment	Nos.	160894	192	
XIII.	WELFARE				
1	Scheduled Castes				
a	Student Hostels (incl. Colleges)				
	Hostels for Boys	Nos.	597	15	
	Hostels for Girls	Nos.	278	6	
	Total		875	21	
b	Boarders				
	Students(Boys)	Nos.	49102	745	
	Students(Girls)	Nos.	29928	425	
	Total		79030	1170	
2	Scheduled Tribes				
a	Student Hostels (incl. Ashram Schools)				
	Hostels for Boys	Nos.	324	13	
	Hostels for Girls	Nos.	148	4	
	Total		472	17	
b	Boarders				
	Students(Boys)	Nos.	65635	3195	
	Students(Girls)	Nos.	52141	1745	
	Total		117776	4940	

#	Parameters	Unit	State	Nirmal	%
3	Backward Classes				
a	Student Hostels (incl. Colleges)				
	Hostels for Boys	Nos.	474	19	
	Hostels for Girls	Nos.	226	4	
	Total		700	23	
b	Boarders				
	Students(Boys)	Nos.	44373	771	
	Students(Girls)	Nos.	24328	82	
	Total		68701	853	
XIV.	WOMEN & CHILD WELFARE				
1	ICDS				
a	ICDS Projects	Nos.	149	4	
b	Anganwadi Centres	Nos.	35700	926	
c	Anganwadi Helpers	Nos.	33248	806	
d	Anganwadi Workers	Nos.	28669	729	
e	Children Enrolled	Nos.	2427396	62968	
2	Self Help Groups (SERP)				
a	Self Help Groups	Nos.	426705	11097	
b	SHG Members	Nos.	4442215	125861	
c	SHGs provided with Bank Credit	Nos.	63049	1082	
d	Total amount of bank credit provided	Rs. in Crore	1710.51	20.08	
XV	RURAL WATER SUPPLY				
a	Hand Pumps	Nos.	157873	5138	
b	Protected Water Supply Schemes (PWSS)	Nos.	21910	757	
c	Comprehensive Protected Water Supply Schemes (CPWSS)	Nos.	5364	11	
d	Individual Sanitary Latrines	Nos.	1663839	22603	
XVI.	BANK NETWORK				
a	Nationalised Banks	Nos.	2,101	17	
b	State Bank & its associates	Nos.	1,239	21	
c	Private Banks	Nos.	824	5	
d	Foreign Banks	Nos.	69	0	
e	Regional Rural Banks	Nos.	784	28	
	Total		5,017	71	
XVII.	Communications (BSNL)				
a	Telephone Exchanges	Nos.	1,146	30	
b	Telephone Connections	Nos.	496,018	2416	
c	Public Telephones	Nos.	6,607	32	
XVIII.	Post Offices				
a	Head Post Offices	Nos.	38	0	
b	Sub-Post Offices	Nos.	692	15	
c	Branch Post Offices	Nos.	4,143	107	
	Total		4,873	122	