

2011

Success Story – Shahi Market, Gorakhpur Reducing Risk



Gautam Gupta, PSA

Urban Risk Reduction Project, Gorakhpur –

Gol – UNDP DRR Programme

1/1/2011

A. Background:

Shahi Market is one of the Eastern Uttar Pradesh most favourite Gorakhpur's market to buy electronic goods, equipments, clothes and fabrics at cheap prices and also various coaching institutions where students of Universities and degree colleges attend coaching classes. Market has all the showrooms of international brand but the main attraction point of this market is computer related goods at unbeatable prices. This is the best place for purchasing electronic equipments. The front street of Shahi Market is famous for Export garments at low prices.

B. Varieties of Shops are available in Shahi Market such as:

1. Computer related
2. Cyber Café
3. Bakeries
4. Garments
5. Printing Press
6. Courier Services
7. And also various education institutions

Shahi Market is hub for all forms of IT hardware, such as personal computers, servers, networking equipment, software, documentation services, and all allied services. Several manufacturers of computer hardware have their authorized dealerships located here, and as such, it is often considered as a computer enthusiast's shopping area.

C. Vulnerability Profile:

Shahi Market is accessible by all forms of public transport, as it lies in heart of City Golghar, Gorakhpur. Due to heavy traffic and congestion, it was very difficult to reach over there. Shahi Market has only one exit and entry point which creates lots of problem. Approx 200 shops are lies in the market. Un planned electricity wiring, parking and cloth hoardings at risk. Lack of toilet and drinking water facilities increase the vulnerabilities of Shahi Market.

D. Market Vulnerability Assessment Format.

A format developed for vulnerability assessment, in which 5 major problems has been taken – 1. Fire, 2.Parking, 3.Entrance & Exit Point, 4.Safe drinking water and 5.Unplanned Electricity & telephone wire. Keeping all these problems, a suggestion to mitigate problem was invited from the shop keepers. Total 40 formats were filled.

E. Assessment Team Members

- a.* Additional District Magistrate (Finance & Revenue)
- b.* City Magistrate
- c.* Fire Station Officer
- d.* Assistant Engineer, Gorakhpur Development Authority
- e.* Deputy Controller, Civil Defence
- f.* SDO, Electricity Department

g. Executive Engineer, Municipal Corporation

F. Findings of the assessment

On 9th June, 2011 an assessment team from District Administration visited Shahi Market and discuss with the shopkeepers and landlords. The findings are:

- a.* Extinguishing Cylinders (Co2/Halon 1211) are to be made Compulsory for every shop.
- b.* Parking of the vehicles is to be manipulated (only owners are to be allowed to bring in) in such a way so that they should not pose as an obstruction for entry/exist as it is all parking outside market occupied by street vendors.
- c.* All the hanging electrical wires are to be properly fixed to avoid any chance of electrical fire by fault, if necessary wires are to be replaced with and distribution is to be done by distribution box. (by electricity department).
- d.* All the shops in the premises are to be numbered and a chart of the same to be displayed at the entrance of the Market along with their contact details, rest all the banners are to be removed from that place (it will prove handy in time of crisis)
- e.* All the banner and hording in the main way of Shahi Market are to be placed in such way so that it should not become obstruction in visual (clear view from starting to end) and working way.
- f.* There must be at least 02 Fire Points from district fire station in the market and to be inspected from time to time to ensure they are in serviceable condition.
- g.* There must be Hydrant Connection in the market to minimize fire hazard in the narrow lanes of the market.
- h.* To minimize the threat of Bomb/Nuisance in the market at least 02 Security/Police personnel are to be deployed by the Administration by day and beat personnel by night.
- i.* Fire and security audit is to be done at every six month so that if there is any change it is to be brought in notice of the authorities.
- j.* No Generators are to be permitted inside the market premises to reduce the risk of Fire Hazard/ Sound Pollution also.
- k.* Laminated list of all the important helpline are to be displayed in front of every shop to be used by owner/public in time of crisis.
- l.* Revamping of existing toilets/sanitation facilities and availability of safe drinking water.

G. Work Assign

- a.* At least **one fire extinguisher** should be placed in between 5 shops. (Fire Department/ landlord)
- b.* **Review** the existing **fire safety measures** applied by the shop keepers. (Fire Department /landlord)
- c.* Placement of **8 electricity hubs** according to the shop accessibility. (Electric Department)

- d. Installation of **additional 400 K.V.A.** for reducing electricity over loading. Electricity Department was ready to install if landlord or Municipal Corporation, Gorakhpur will provide land. (Electricity Department)
- e. Strengthening parking place, for this landlord will responsible to **deployed 4 security guards** and Police Department will facilitate them 15 days, so that it create pressure on visitors. (Landlord/Police Department)
- f. Installation of **2 new mark II hand pumps** for safe drinking water. (Municipal Corporation)
- g. Installation of **fire hydrant.** (Municipal Corporation/ fire department)
- h. Remove **un-used** telephone and electricity wire. (Electricity Department)
- i. **Listing** of shopkeepers with shop number and owner details. (landlord)
- j. **1 Emergency exit gate** should be open. (landlord)

H. Media Speaks



I. Previous Status of the Market



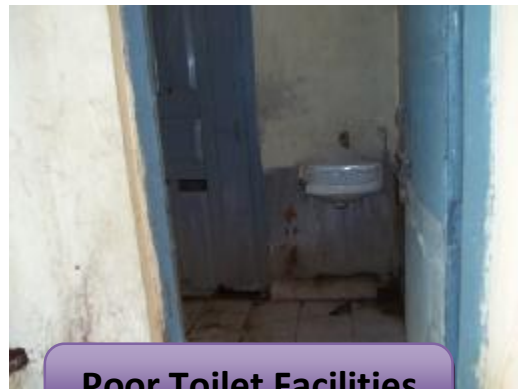
Un Planned Parking



Hanging Telephone & Electricity Wire



Single Entry & Exit Gate



Poor Toilet Facilities

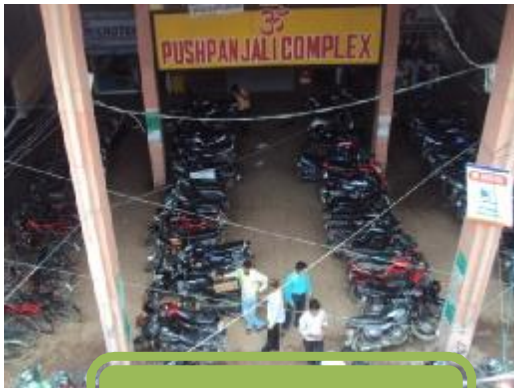
J. Current Status



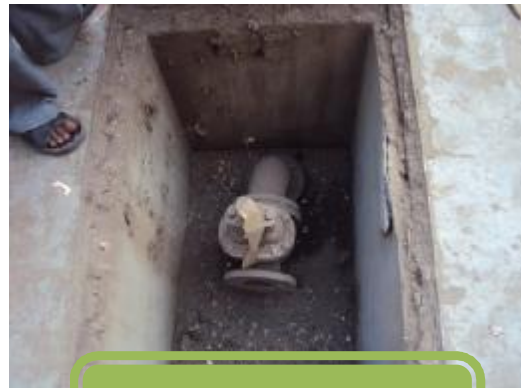
Improved Toilet Facilities



Established 8 Electricity Hubs



Managed Parking Facilities



Fire Hydrant at Entrance Gate



Established 2 Mark II Hand pumps